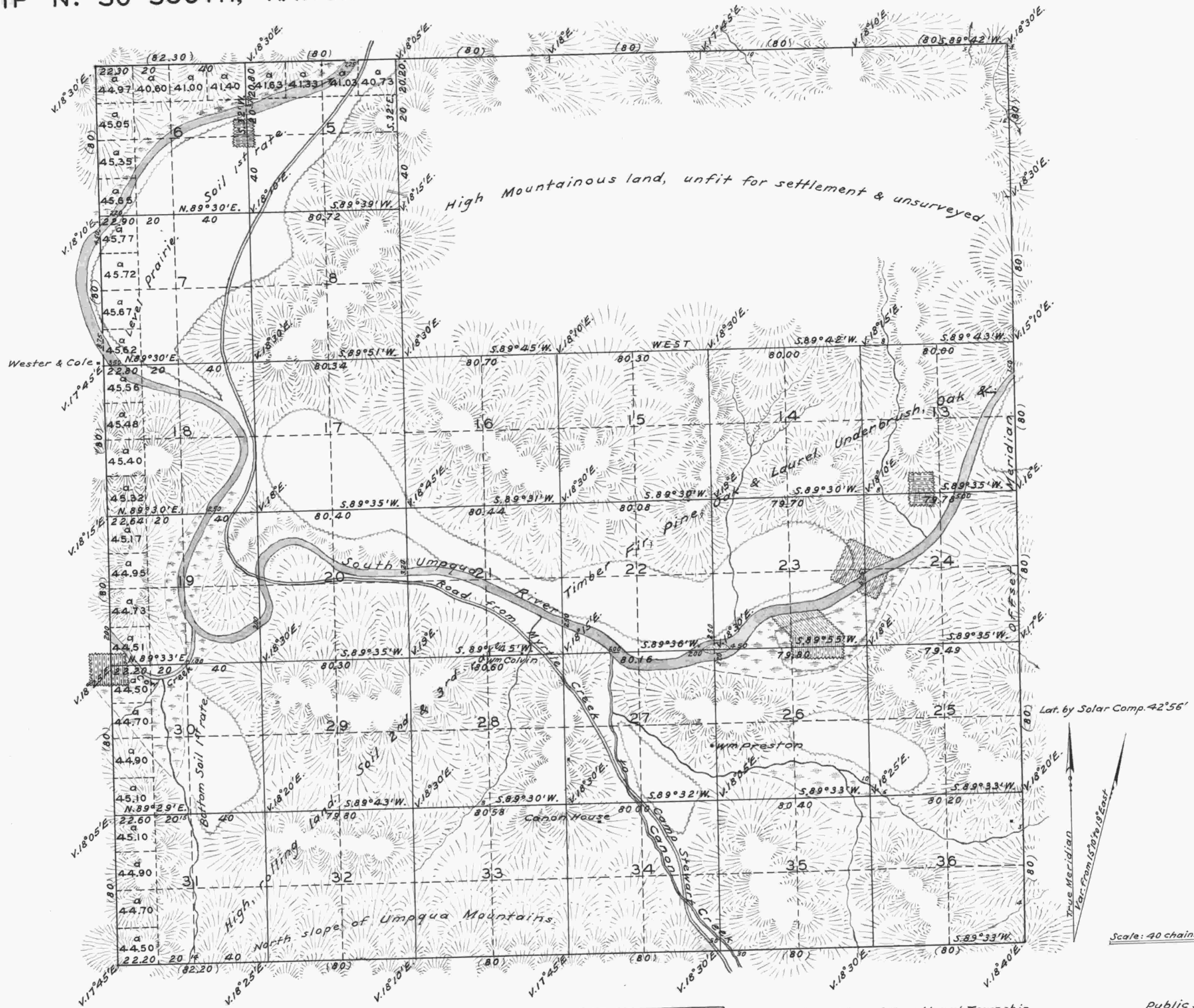


TOWNSHIP N° 30 SOUTH, RANGE N° 5 WEST, OF THE WILLAMETTE MERIDIAN, OREGON.



Surveys designated	By whom surveyed	Contract		Amt. of surveys			When surveyed	When charged in the Sur. Gen's. Accounts.
		No.	Date	Miles	chains	links		
Township Lines	Nathaniel Ford	44	May 30 th , 1854	12	02	20	March 9 th , 1855	1 st Qr. 1855.
Subdivisions	Nathaniel Ford	44	May 30 th , 1854	50	17	93	March 9 th , 1855	1 st Qr. 1855.
Total number of Acres		18,051.06						

The above Map of Fractional Township N° 30 South of Range N° 5 West, of the Willamette Meridian, Territory of Oregon, is strictly conformable to the field notes of the survey thereof on file in this office which have been examined and approved.
 Surveyor General's Office, (signed) C.K. Gardiner.
 Salem, March 9th, 1855. Surv. Gen. of Oregon.

Public Survey Office,
 Portland, Oregon,
 October 9, 1946.
 I certify this to be a correct copy of the original plat on file in this office.
Joseph A. Gentry
 Regional Cadastral Engineer.