

# TOWNSHIP 30 SOUTH, RANGE 4 WEST, OF THE WILLAMETTE MERIDIAN, OREGON

## DEPENDENT RESURVEY, SUBDIVISION OF SECTIONS, AND SURVEY

A history of surveys, corner descriptions, and other relevant information are contained in the field notes.

This plat represents the dependent resurvey of a portion of the west and south boundaries, subdivisional lines, and Mineral Survey No. 805, designed to restore the corners in their true original locations according to the best available evidence, and the subdivision of sections 29, 31, and 32, Township 30 South, Range 4 West, Willamette Meridian, Oregon.

Official areas based on the measurements of this survey have been returned for federal interest land where indicated. Aliquot part legal subdivisions retain their aliquot characteristics and refer to precisely the same land as that which was previously identified by its original survey or description. Except as indicated hereon, the lottings and areas are as shown on the plat approved June 29, 1895 and the supplemental plat approved September 12, 1921, accepted October 4, 1921.

Survey executed by Jeffrey O. Covington, Cadastral Surveyor, beginning April 19, 2017, and completed October 28, 2019, pursuant to special instructions approved April 7, 2017, for Group No. 2872, Oregon.

OFFICIALLY FILED: 6/21/2021

FILED

Date: 11/8/2021 By: JC

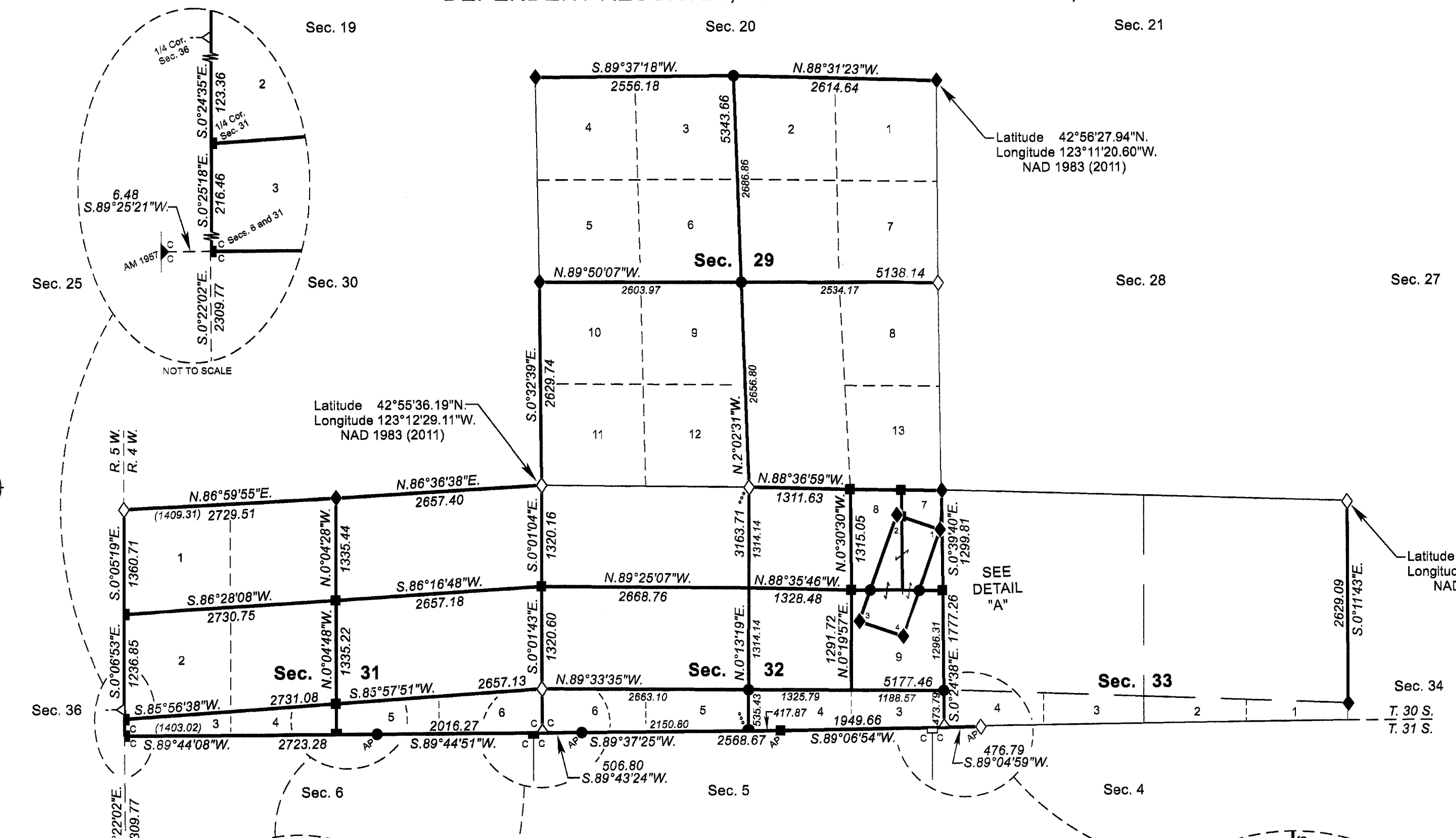
This survey consists of:

Map: T30-4 2021-1

VOL 59

23824-23861

DOUGLAS COUNTY SURVEYOR



LEGAL SUBDIVISION	OFFICIAL ACRES
<b>SECTION 31</b>	
LOT 1	43.72
LOT 3	8.44
LOT 4	10.74
LOT 5	13.43
LOT 6	16.10
NE 1/4 NE 1/4	40.31
NW 1/4 NE 1/4	40.54
NE 1/4 NW 1/4	40.65
<b>SECTION 32</b>	
LOT 3	13.51
LOT 4	15.94
LOT 5	16.64
LOT 6	17.22
LOT 7	8.13
LOT 9	27.77
NW 1/4 NE 1/4	39.82
SW 1/4 NE 1/4	39.69
SW 1/4 NW 1/4	40.36
SE 1/4 NW 1/4	40.26
TOTAL AREA	473.27
FEDERAL INTEREST LAND RESURVEYED	

- LEGEND**
- ◊ Original corner previously remonumented
  - ◆ Original corner remonumented this survey
  - Corner previously established or reestablished
  - Corner previously established or reestablished; remonumented this survey
  - Corner established or reestablished this survey
  - + Corner point calculated, no monument set

UNITED STATES DEPARTMENT OF THE INTERIOR  
BUREAU OF LAND MANAGEMENT

Portland, Oregon

This plat is strictly conformable to the approved field notes, and the survey, having been correctly executed in accordance with the requirements of law and the regulations of this Bureau, is hereby accepted.

For the Director

*Mary J. M. Hunt*

Chief Cadastral Surveyor of Oregon

January 11, 2021

Date

