

TOWNSHIP 30 SOUTH, RANGE 4 WEST, OF THE WILLAMETTE MERIDIAN, OREGON

DEPENDENT RESURVEY AND SUBDIVISION OF SECTION 3

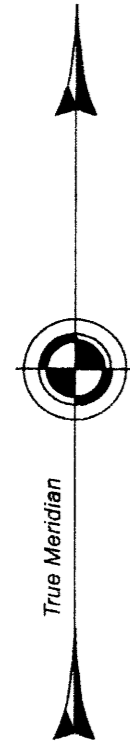
DOUGLAS COUNTY SURVEYOR

A history of surveys, corner descriptions, and other relevant information are contained in the field notes.

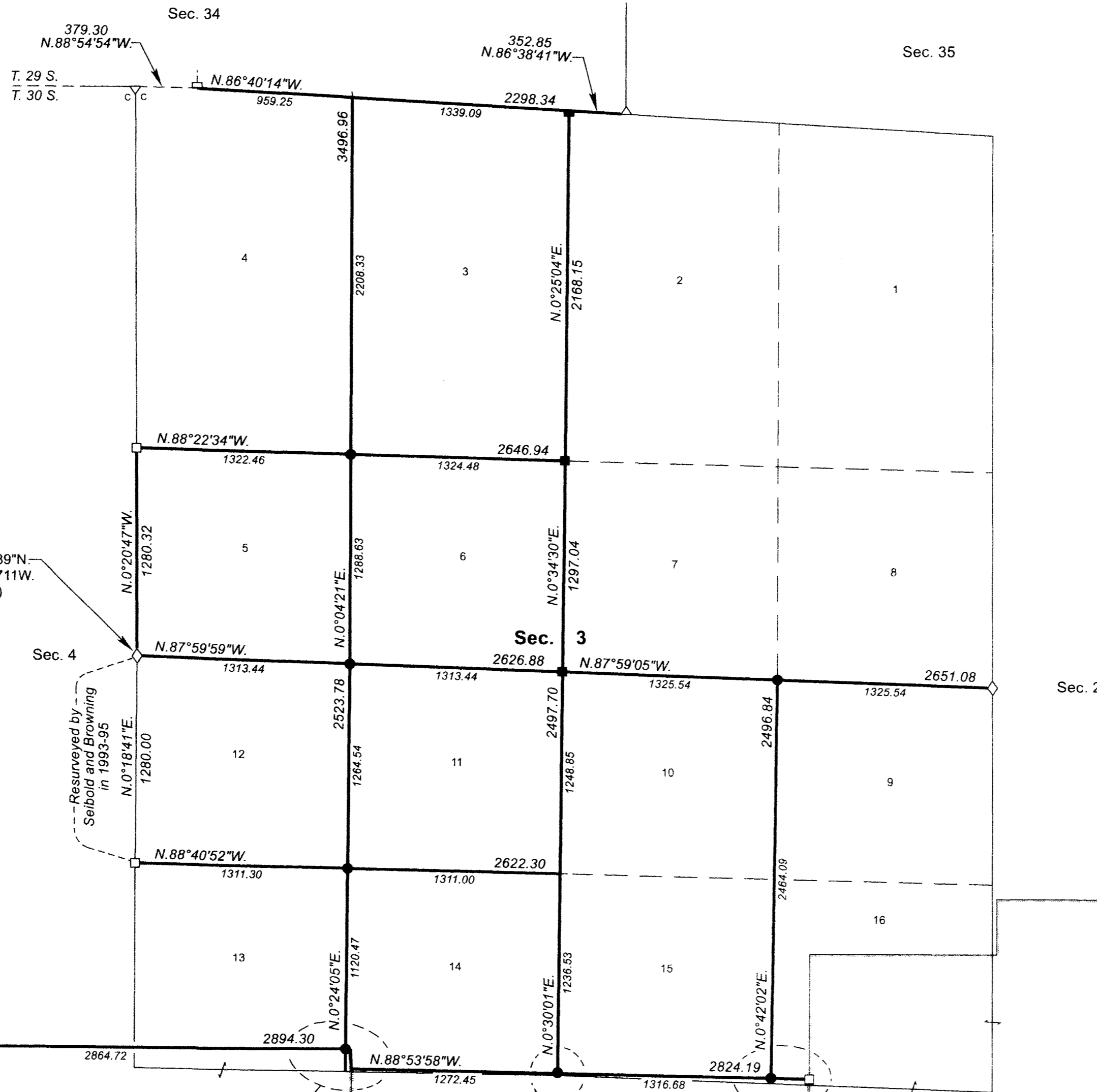
This plat represents the dependent resurvey of a portion of the north boundary, subdivisional lines, and Donation Land Claim lines, designed to restore the corners in their true original locations according to the best available evidence, and the subdivision of section 3, Township 30 South, Range 4 West, Willamette Meridian, Oregon.

Official areas based on the measurements of this survey have been returned for Federal interest land where indicated. Aliquot part legal subdivisions retain their aliquot characteristics and refer to precisely the same land as that which was previously identified by its original survey or description. A lot can only be subdivided by survey or supplemental plat. Except as indicated hereon, the lottings and areas are as shown on the plat approved February 18, 1890.

Survey executed by Jeffrey O. Covington, Cadastral Surveyor, beginning June 11, 2015, and completed July 30, 2015, pursuant to special instructions approved June 9, 2015, for Group No. 2777, Oregon.



Latitude 42°59'25.389"N
Longitude 123°10'04.711"W
NAD 1983 (2011)



Resurveyed by Seibold and Browning in 1993-95

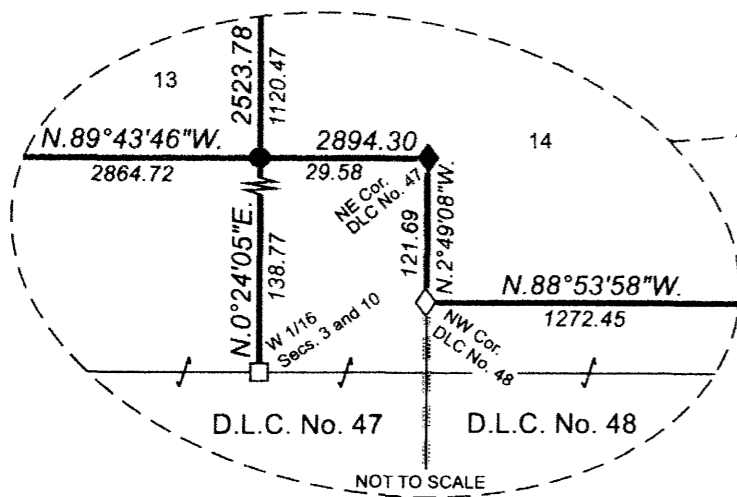
D.L.C. No. 46

D.L.C. No. 47

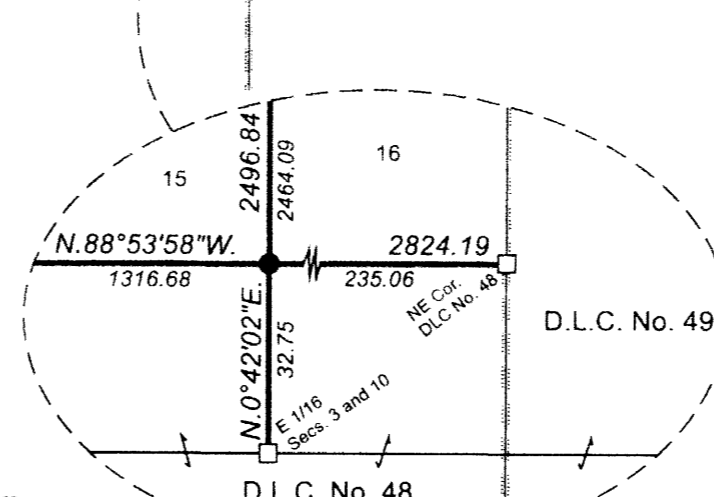
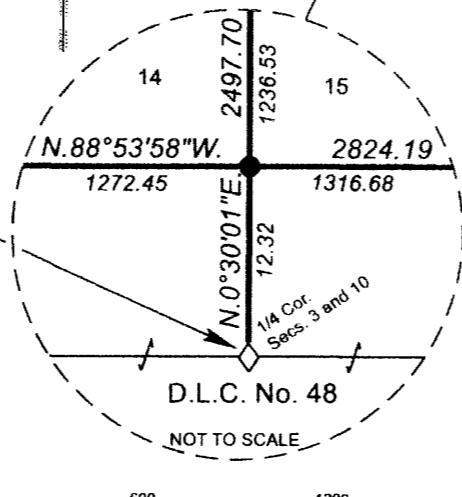
Sec. 10

D.L.C. No. 48

D.L.C. No. 49



Latitude 42°58'59.816"N
Longitude 123°09'29.684"W
NAD 1983 (2011)



LEGAL SUBDIVISION	OFFICIAL ACRES
SECTION 3	
LOT 5	38.84
LOTS 10 & 15	75.04
LOT 11	37.85
LOT 12	38.32
LOT 14	37.18
TOTAL AREA	227.23
FEDERAL INTEREST LAND RESURVEYED	

LEGEND	
◇	Original corner previously remonumented
◆	Original corner remonumented this survey
□	Corner previously established or reestablished
■	Corner previously established or reestablished; remonumented this survey
●	Corner established or reestablished this survey
+	Corner point calculated, no monument set

UNITED STATES DEPARTMENT OF THE INTERIOR
BUREAU OF LAND MANAGEMENT
Portland, Oregon

This plat is strictly conformable to the approved field notes, and the survey, having been correctly executed in accordance with the requirements of law and the regulations of this Bureau, is hereby accepted.

For the Director
Mary J. M. Hurd
Chief Cadastral Surveyor of Oregon

February 5, 2018
Date

OFFICIALLY FILED: 3/2/2018

