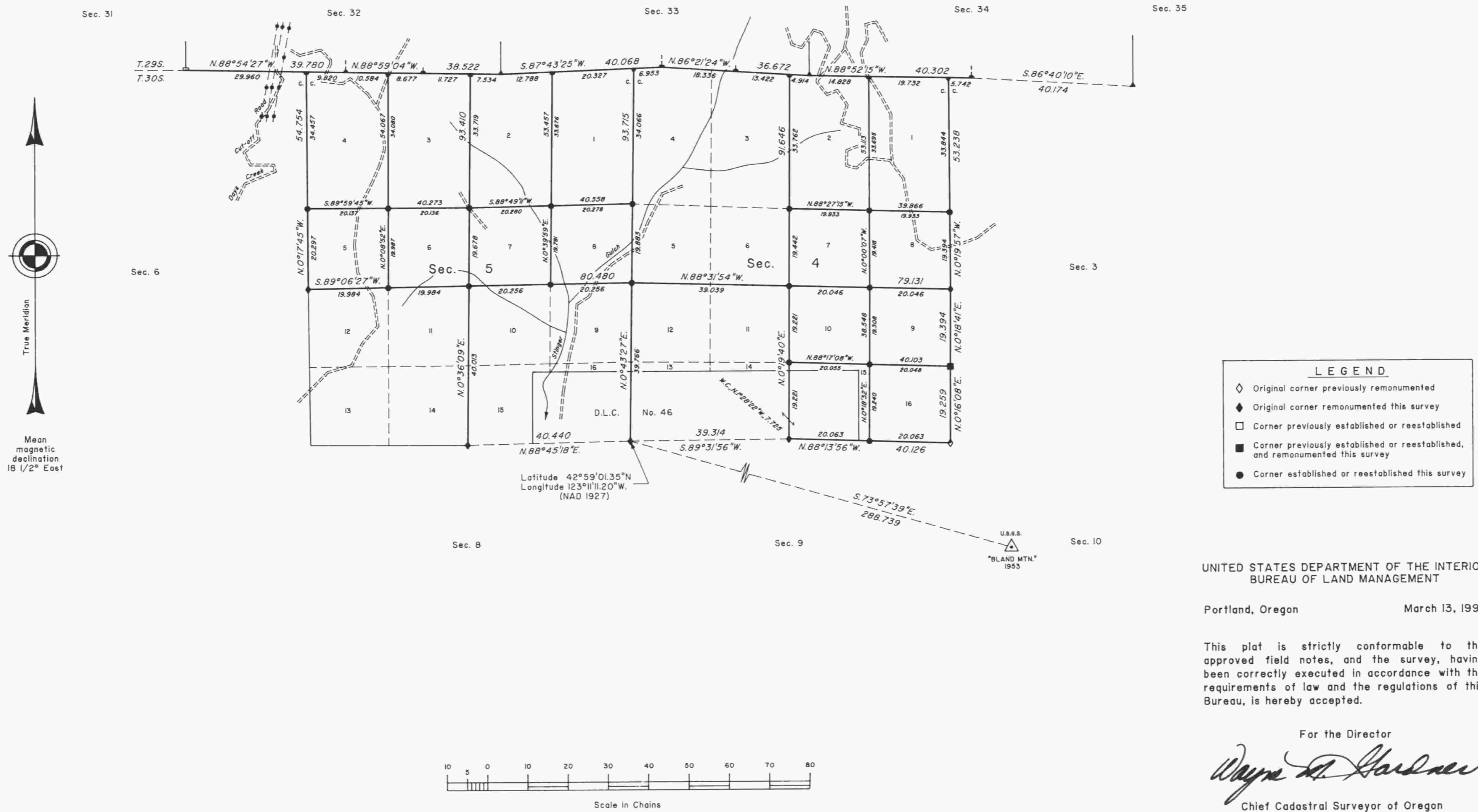


TOWNSHIP 30 SOUTH, RANGE 4 WEST, OF THE WILLAMETTE MERIDIAN, OREGON

SHEET 2 OF 2

DEPENDENT RESURVEY AND SUBDIVISION OF SECTIONS



UNITED STATES DEPARTMENT OF THE INTERIOR
BUREAU OF LAND MANAGEMENT

Portland, Oregon March 13, 1998

This plat is strictly conformable to the approved field notes, and the survey, having been correctly executed in accordance with the requirements of law and the regulations of this Bureau, is hereby accepted.

For the Director

Wayne A. Gardner
Chief Cadastral Surveyor of Oregon