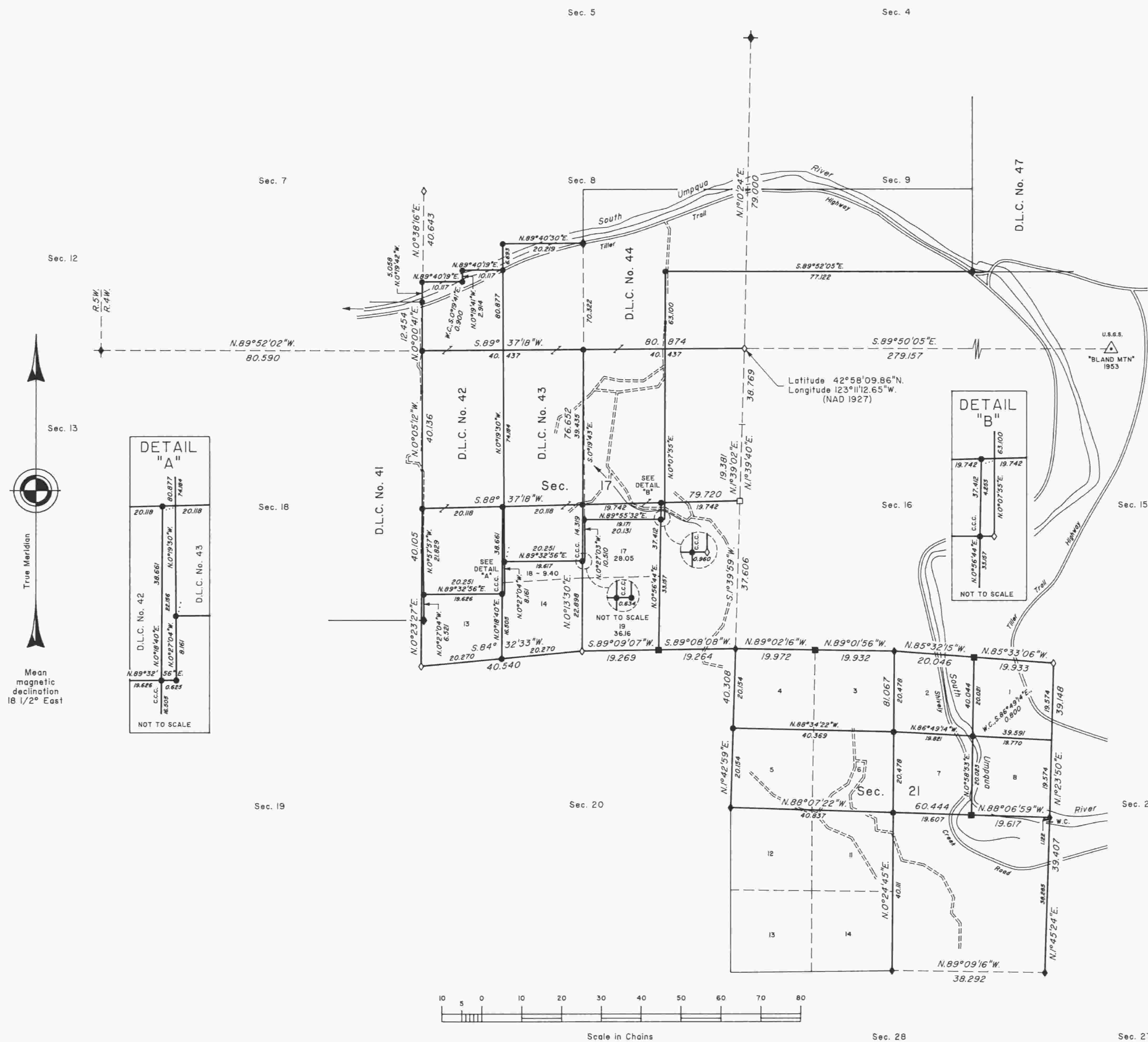


# TOWNSHIP 30 SOUTH, RANGE 4 WEST, OF THE WILLAMETTE MERIDIAN, OREGON

SHEET 1 OF 2

## DEPENDENT RESURVEY AND SUBDIVISION OF SECTIONS



A history of surveys is contained in the field notes.

This plat represents a dependent resurvey of a portion of the south boundary, T. 29 S., R. 4 W., a portion of the subdivisional lines and boundaries of Donation Land Claims Nos. 41, 42, 43 and 44, T. 30 S., R. 4 W., Willamette Meridian, Oregon, designed to restore the corners in their true original locations according to the best available evidence, and the subdivision of sections 4, 5, 17 and 21.

Measured distances and directions have been adjusted by Cadastral Measurement Management (CMM), a computer program that incorporates a least squares adjustment routine. The adjusted bearings and distances are reported to the nearest second and 0.001 chain.

The lottings and areas are as shown on the plat approved February 18, 1890.

The survey was executed by Bryan S. Seibold, Cadastral Surveyor, and Robert H. Browning, Surveying Technician, beginning May 24, 1993, and completed April 7, 1995, pursuant to Special Instructions dated May 6, 1993, and Supplemental Special Instructions dated August 24, 1993, under Group Number 1686, Oregon.

Timber in this area consists of fir, cedar, hemlock, alder, maple, oak, chinquapin, pine, ash, yew and madrone.

The tie to the geodetic control station is reported as mean bearing and sea level distance.

**LEGEND**

- ◊ Original corner previously remonumented
- ◆ Original corner remonumented this survey
- Corner previously established or reestablished
- Corner previously established or reestablished, and remonumented this survey
- Corner established or reestablished this survey

UNITED STATES DEPARTMENT OF THE INTERIOR  
BUREAU OF LAND MANAGEMENT

Portland, Oregon

March 13, 1998

This plat is strictly conformable to the approved field notes, and the survey, having been correctly executed in accordance with the requirements of law and the regulations of this Bureau, is hereby accepted.

For the Director

*Wayne M. Anderson*

Chief Cadastral Surveyor of Oregon