

TOWNSHIP 30 SOUTH, RANGE 4 WEST, OF THE WILLAMETTE MERIDIAN, OREGON

DEPENDENT RESURVEY AND SUBDIVISION OF SECTION 13

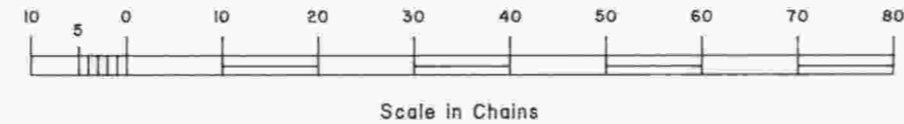
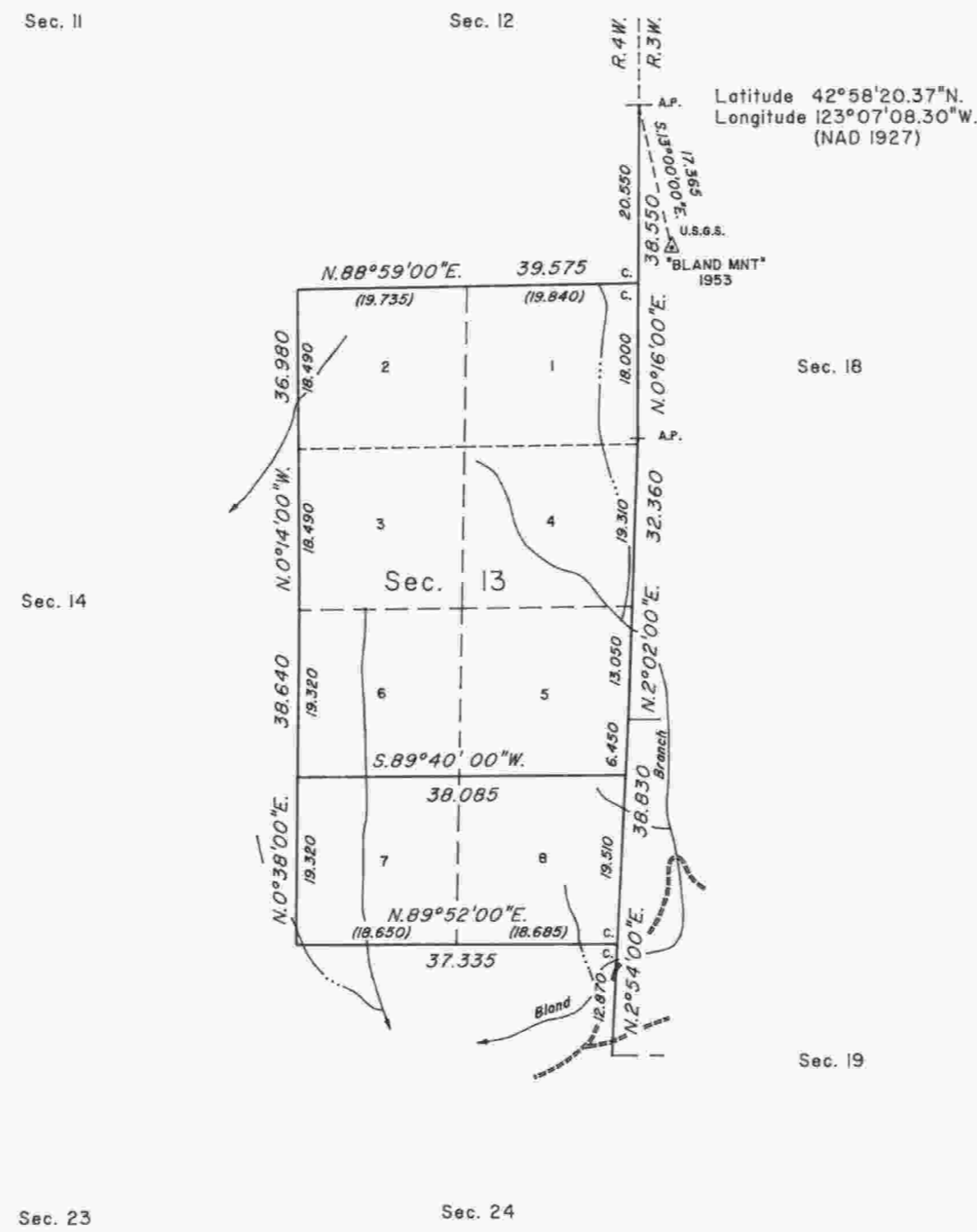
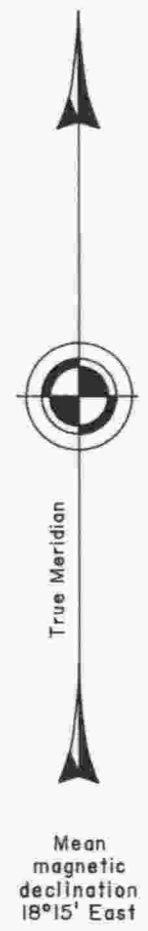
A history of surveys is contained in the field notes.

This plat represents a dependent resurvey of a portion of the west boundary of T. 30 S., R. 3 W. and a portion of the subdivision lines, T. 30 S., R. 4 W., Willamette Meridian, Oregon, designed to restore the corners in their true original locations according to the best available evidence, and the subdivision of section 13.

The lottings and areas are as shown on the plat approved January 21, 1892.

The survey was executed by Wayne L. Rogers, Cadastral Surveyor, beginning April 18, 1988, and completed May 21, 1988, pursuant to Special Instructions dated March 25, 1988, under Group Number 1435, Oregon.

Timber in this area consists of fir, pine, cedar, hemlock, madrone, oak, maple, alder, chinquapin, dogwood, ash and cherry.



UNITED STATES DEPARTMENT OF THE INTERIOR
BUREAU OF LAND MANAGEMENT

Portland, Oregon November 8, 1991

This plat is strictly conformable to the approved field notes, and the survey, having been correctly executed in accordance with the requirements of law and the regulations of this Bureau, is hereby accepted.

For the Director

Wayne M. Gardner

Chief Cadastral Surveyor of Oregon