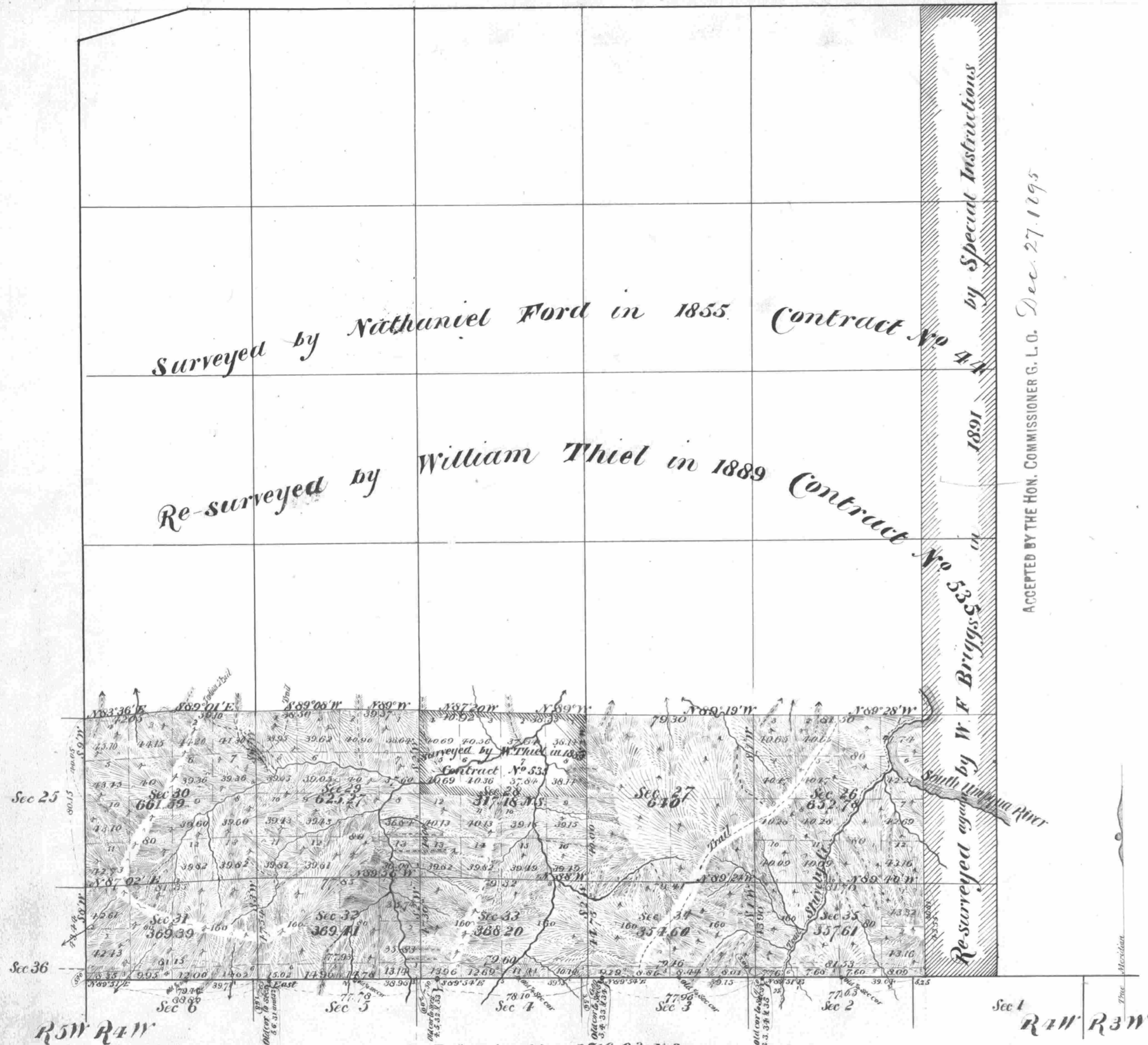


Township N<sup>o</sup> 30 South Range N<sup>o</sup> 4 West of the Willamette Meridian Oregon



ACCEPTED BY THE HON. COMMISSIONER G. L. O. Dec. 27 1895

Surveys Designated	By Whom Surveyed	Date of Contract	No.	Amount of Surveys	When Surveyed	Mean Declination
Subdivisions	William M. Bushy	June 17 1893	620	10 - 23 - 12	Oct 11 1893	19° 07' 30"
Connections				25 - 65		

The above Map of Township N<sup>o</sup> 30 South of Range N<sup>o</sup> 4 West of the Willamette Meridian Oregon, is strictly conformable to the field notes of the survey thereof on file in this Office which have been examined and approved.

Surveyor General's Office }  
 Portland Oregon June 29. 1895 } *John C. Arnold,*  
 Sur<sup>t</sup> Gen<sup>l</sup> for Oregon