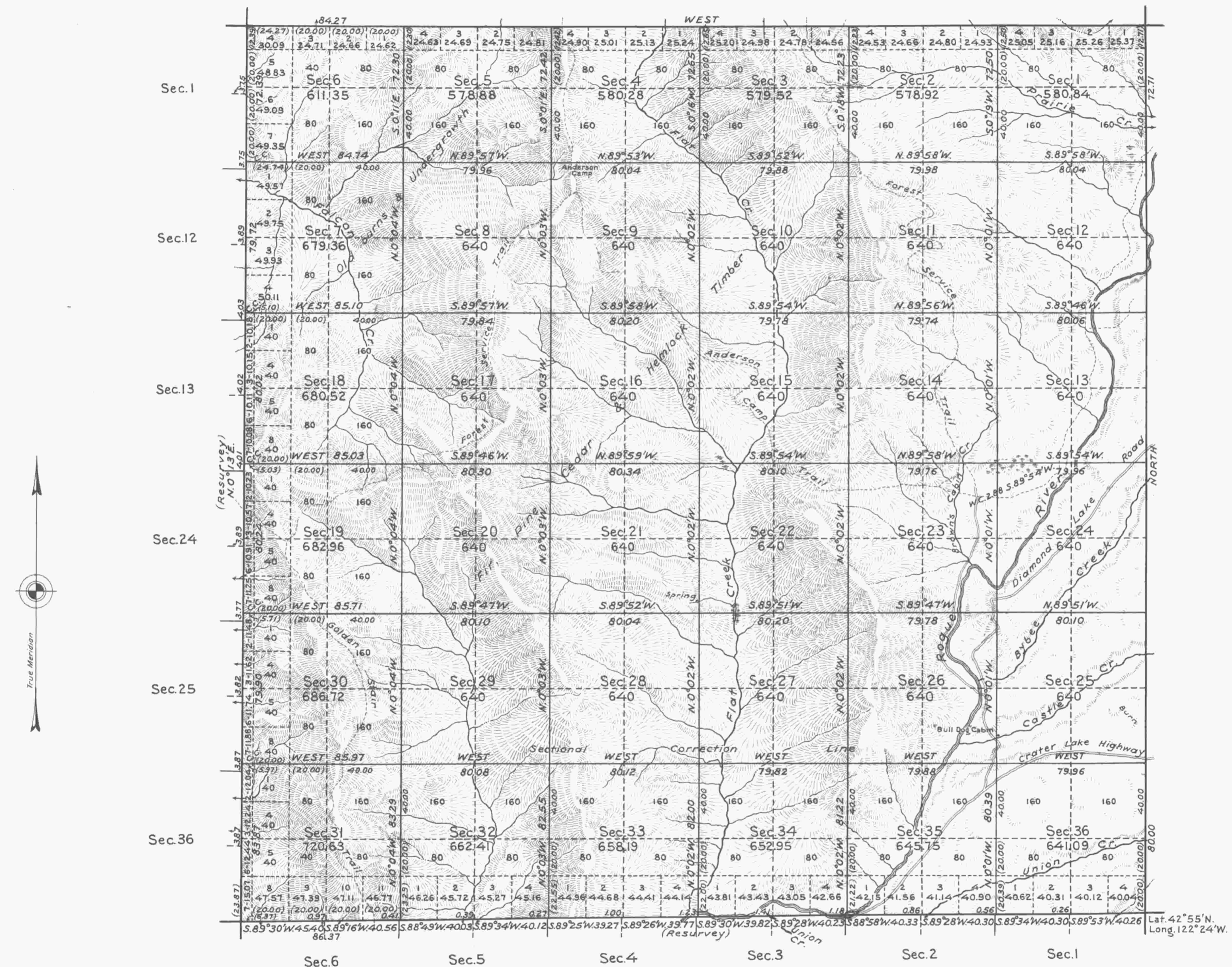


# TOWNSHIP N<sup>o</sup> 30 SOUTH, RANGE N<sup>o</sup> 3 EAST OF THE WILLAMETTE MERIDIAN, OREGON.



Mean Magnetic Declination, 21° 30' E.      Scale: 40 Chains to an Inch.      Area Surveyed, 23,020.37 Acres.

LINES DESIGNATED	BY WHOM SURVEYED	GROUP NO	DATE	MILEAGE		WHEN SURVEYED	
				MLS.	CHS.	BEGUN	COMPLETED
Exterior	Herbert N. Raymond	64 & 125	Dec. 21, 1920 & Sept. 9, 1921	17	75.24	May 23, 1927	July 13, 1928
Subdivisional				59	78.16	Oct. 27, "	Aug. 4, "
Meander							
Miscellaneous				19.43		July 6, 1928	" 2, "

Office of U.S. Supervisor of Surveys  
 Denver, Colorado, May 24, 1929.  
 The above plat of Township No. 30 South, Range No. 3 East of the Willamette Meridian, Oregon, is strictly conformable to the field notes of the survey thereof which have been examined and approved.

*Wm. H. Johnson*  
 U.S. Supervisor of Surveys.

DEPARTMENT OF THE INTERIOR  
 GENERAL LAND OFFICE  
 Washington, D.C., August 20, 1929.  
 The survey represented by this plat having been correctly executed in accordance with the requirements of law and the regulations of this office, is hereby accepted.

*D. K. Canaday*  
 Acting Assistant Commissioner

100