

# TOWNSHIP 30 SOUTH, RANGE 3 WEST, OF THE WILLAMETTE MERIDIAN, OREGON

Date: 10/13/2020 By: JC  
 This survey consists of:  
 Map: PLAT: T30-3 2020-1  
 Narrative: VOL. 59 PG 23796-7  
 Corner Rpt: NO SEPARATE LINES NOTES ALL INFORMATION IS ON THE PLAT

SHEET 1 OF 2

## DEPENDENT RESURVEY

DOUGLAS COUNTY SURVEYOR

This plat constitutes the entire record of the dependent resurvey of a portion of the subdivisional lines, designed to restore the corners in their true original locations according to the best available evidence, Township 30 South, Range 3 West, Willamette Meridian, Oregon.

The directions of the lines are based on the true meridian as determined by Global Positioning System (GPS) techniques and carried forward by sustained angulation using conventional survey techniques. All measurements along the lines were derived through the use of electronic measuring equipment. Measured distances and directions have been adjusted by computer software that incorporates a least squares adjustment routine. The adjusted mean bearings and mean horizontal ground elevation distances are reported to the nearest second and 0.01 foot.

The lottings and areas are as shown on the plat approved June 29, 1895.

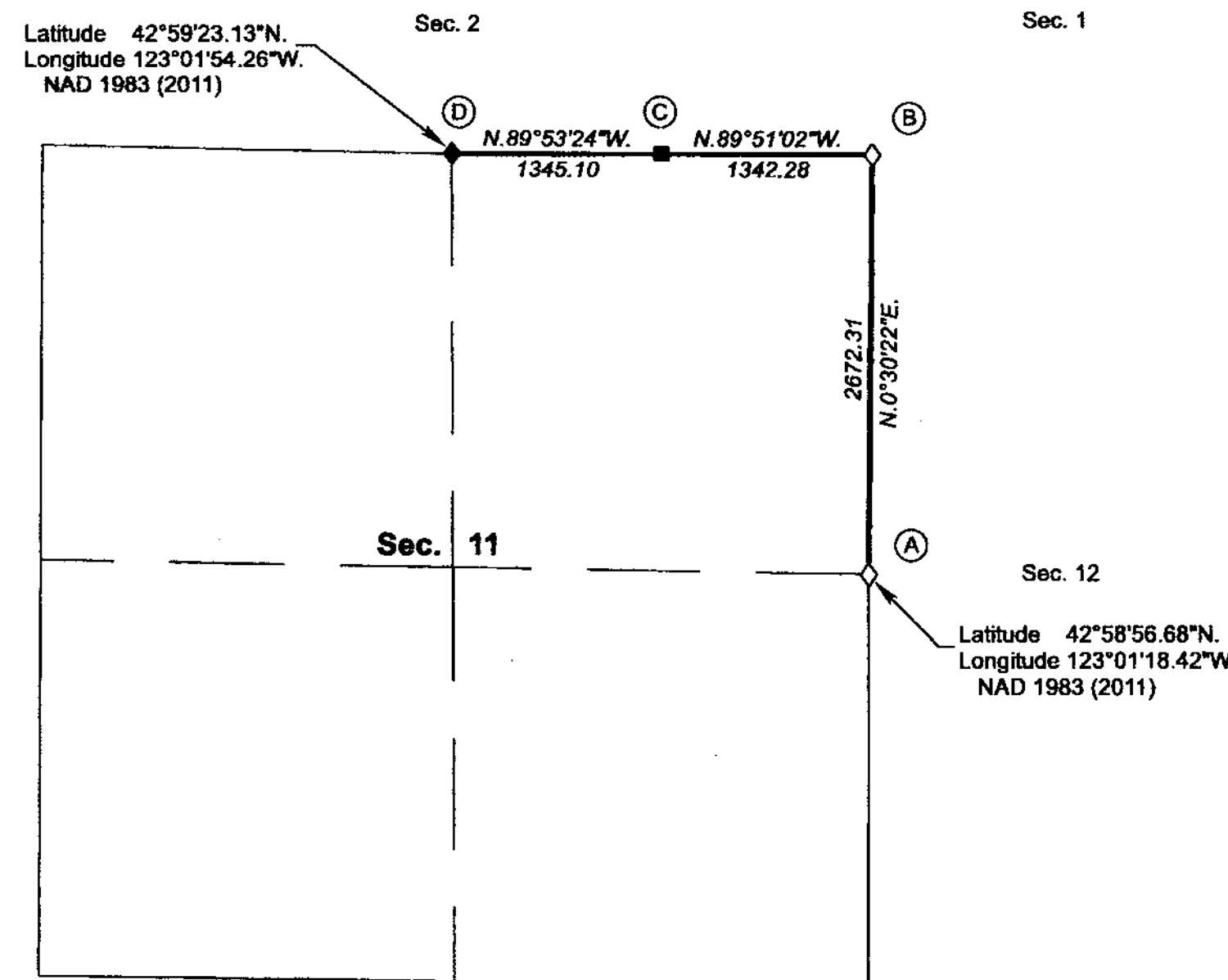
Preliminary to the resurvey, the lines of the official original survey and resurveys were retraced and search was made for all corners, lines, other calls of the record, and, where available, collateral evidence of local surveys and corners. Identified corners were perpetuated in their original positions. The retracement data was thoroughly verified and only the true line field notes are given hereon.

Each new bearing tree has a 2 1/2 inch x 1/4 inch magnetic nail (Mag Nail) driven at the base on right side center, unless otherwise noted in the corner description. Aluminum angle irons were driven alongside each monument unless a similar marker was already in place.

Only those lines bounding Federal interest land were blazed.

The geographic positions shown hereon were determined by ties from temporary GPS control points, established utilizing dual frequency, carrier phase GPS receivers, and processed using the National Geodetic Survey's Online Positioning User Service (OPUS).

The survey was executed in accordance with the specifications set forth in the Manual of Surveying Instructions (2009), and the special instructions approved October 31, 2017, for Group No. 2896, Oregon, by Jeffrey O. Covington, Cadastral Surveyor, beginning on November 7, 2017, and completed on December 18, 2019. He was assisted by Robert NMI Durning, Surveying Technician.



The history of the official surveys pertaining to this survey is as follows:

In 1893, William M. Bushey, U.S. Deputy Surveyor, surveyed a portion of the subdivisional lines, as shown on the official plat of survey approved June 29, 1895, and accepted December 27, 1895.

The following local surveys (M) and county surveyor file (CS), filed in the Douglas County Surveyor's Office are referred to in the subsequent corner descriptions and are referenced by surveyor's last name, official title, Professional Land Surveyor (PLS) No., and year.

Date	Name and Registration Number	File Number
1963	James W. Byron, Douglas County Deputy Surveyor	CS52/138
1963	James W. Byron, Douglas County Deputy Surveyor	CS52/138
1960	James W. Byron, Douglas County Deputy Surveyor	CS49/47
1980	Howard W. Johnstone, PLS No. 498	M86-6
2013	Gregory D. Lang, PLS No. 2295	CS65/79-12A&C

**LEGEND**

- ◊ Original corner previously remonumented
- ◆ Original corner remonumented this survey
- Corner previously established or reestablished; remonumented this survey

I, JEFFREY O. COVINGTON, Cadastral Surveyor, HEREBY CERTIFY upon honor, that in pursuance of special instructions bearing the approval date of the 31st day of October, 2017, and the assignment instructions bearing the date of the 31st day of October, 2017, I have dependently resurveyed a portion of the subdivisional lines, Township 30 South, Range 3 West, Willamette Meridian, Oregon, which is represented upon this plat as having been executed by me and under my direction; and that said survey has been made in strict conformity with said special instructions, the Manual of Surveying Instructions, and in the specific manner described on this plat.

*Jeffrey O. Covington*  
 Cadastral Surveyor

July 1, 2020  
 Date

UNITED STATES DEPARTMENT OF THE INTERIOR  
 BUREAU OF LAND MANAGEMENT

Portland, Oregon

The survey represented by this plat, having been correctly executed in accordance with the requirements of law and the regulations of this Bureau, is hereby accepted.

For the Director  
*Mary J. M. Hartel*  
 Chief Cadastral Surveyor of Oregon

July 14, 2020  
 Date



OFFICIALLY FILED: 8/21/2020

# TOWNSHIP 30 SOUTH, RANGE 3 WEST, OF THE WILLAMETTE MERIDIAN, OREGON

## DEPENDENT RESURVEY

FILED  
 Date: 10/13/2020 By: JC  
 This survey consists of: SHEET 2 OF 2  
 Map: PLAT: T30-3 2020-1  
 Narrative: VOL. 59 PG 23796-7  
 Corner Rpt: NO SEPARATE LINES NOTES ALL INFORMATION IS ON THE PLAT

DOUGLAS COUNTY  
 SURVEYOR

(A) The 1/4 sec. cor. of secs. 11 and 12, perpetuated by Byron, Douglas County Deputy Surveyor, in 1963; subsequently perpetuated by Lang, PLS No. 2295, in 2013; monumented with the original stone, 8 x 10 x 15 ins. (Record, 15 x 10 x 10 ins.), firmly set, projecting 6 ins. above ground, (alongside is an iron post, 1 1/4 ins. diam., firmly set, projecting, 15 ins. above ground, with brass cap mkd. COUNTY SURVEYORS OFFICE T30S R3W 1/4 S11 S12 1963) with faint marks visible on west face, from which the remains of an original bearing tree

A broken decayed fir stump, 39 ins. diam., bears S. 73 1/2° W., 19.1 ft. dist., alongside of which is a decayed fir, with a tag and no marks visible.

and the bearing trees mkd. by Lang

A fir, 13 ins. diam., bears N. 50 1/2° E., 31.5 ft. dist., with illegible scribe marks visible on partially healed blaze.

A fir, 8 ins. diam., bears S. 49 1/4° E., 20.7 ft. dist., with scribe marks S12 BT visible on partially healed blaze.

A fir, 13 ins. diam., bears S. 57 1/4° W., 14.8 ft. dist., with illegible scribe marks visible on partially healed blaze.

A fir, 20 ins. diam., bears N. 44 3/4° W., 5.6 ft. dist., with illegible scribe marks visible on partially healed blaze.

At the corner point

Set a stainless steel post, 28 ins. long, 2 1/2 ins. diam., 24 ins. in the ground, with brass cap mkd.

T 30 S R 3 W  
 1/4  
 S 11 | S 12  
 2019

Bury the original stone alongside the cor.

At the request of the Douglas County Surveyor's Office, removed the iron post, 32 ins. long, and bury it alongside the cor.

(B) The cor. of secs. 1, 2, 11, and 12, perpetuated by Byron, Douglas County Deputy Surveyor, in 1963; monumented with an iron post, 1 1/4 ins. diam., firmly set, projecting 14 ins. above ground, with a brass cap mkd.

COUNTY SURVEYORS OFFICE  
 T 30 S  
 S 2 | S 1 R  
 3  
 S 11 | S 12 W  
 1963

from which the remains of the original bearing trees

A fir snag, 36 ins. diam., bears N. 11° E., 73.3 ft. dist., with a healed blaze.

A sawed decayed fir stump, 60 ins. diam., bears S. 18 3/4° E., 70.3 ft. dist., with a healed blaze.

A fir snag, 36 ins. diam., bears S. 28 1/2° W., 34.7 ft. dist., with a healed blaze.

A sawed decayed fir stump, 56 ins. diam., bears N. 39° W., 46.2 ft. dist., with a healed blaze.

and the remains of the bearing trees mkd. by Byron

A fir, 30 ins. diam., bears N. 87 1/4° E., 14.5 ft. dist., with a healed blaze.

A decayed fir stump, size indeterminate, bears S. 2 1/4° E., 19.4 ft. dist., alongside of which is a down decayed fir, 20 ins. diam., no marks visible.

A fir, 22 ins. diam., bears S. 44° W., 8.0 ft. dist., with a healed blaze.

A fir, 24 ins. diam., bears N. 86 3/4° W., 40.1 ft. dist., with a healed blaze.

and a new bearing tree

A cedar, 8 ins. diam., bears S. 30 1/4° E., 40.0 ft. dist., mkd. T30S R3W S12 BT.

(C) The E 1/16 sec. cor. of secs. 2 and 11, established by Johnstone, PLS No. 498, in 1980; and is accepted as the cor.; monumented with an iron rod, 5/8 in. diam., firmly set, projecting 17 ins. above ground, with an aluminum cap mkd.

T 30 S R 3 W 1980  
 E 1/16  
 S 2  
 S 11  
 LS 498

from which the remains of the bearing trees mkd. by Johnstone

A roothole bears N. 45 1/4° E., 19.9 ft. dist., alongside of which is a down fir, 11 ins. diam., with a healed blaze.

A fir, 14 ins. diam., bears S. 22 1/4° E., 16.7 ft. dist., with a healed double blaze.

At the corner point

Set a stainless steel post, 28 ins. long, 2 1/2 ins. diam., 27 ins. in the ground, directly over the iron rod, 36 ins. long, with brass cap mkd.

S 2  
 E 1/16  
 S 11  
 2017

from which a new bearing tree

A fir, 9 ins. diam., bears N. 24 1/2° E., 39.0 ft. dist., mkd. E1/16 S2 BT.

(D) The 1/4 sec. cor. of secs. 2 and 11, perpetuated by Byron, Douglas County Surveyor, in 1960; occupied by the remains of the original cor. tree, a heavily decayed fir stump, 27 ins. diam., with no marks visible, from which the remains of an original bearing tree

A decayed fir snag, size indeterminate, bears S. 41 1/2° W., 6.9 ft. dist., with a healed blaze.

and a reference monument mkd. by Byron

An iron post, 1 1/4 ins. diam., firmly set, projecting 18 ins. above ground, bears N. 15° 57' 09" W., 0.91 ft. dist., with a brass cap mkd. COUNTY SURVEYORS OFFICE T30S R3W 1/4 S2 S11 1960.

At the corner point

Set a stainless steel post, 28 ins. long, 2 1/2 ins. diam., 26 ins. in the ground, with brass cap mkd.

T 30 S R 3 W  
 S 2  
 1/4  
 S 11  
 2017

from which

A fir, 9 ins. diam., bears S. 32° W., 23.6 ft. dist., mkd. 1/4 S11 BT.

A fir, 7 ins. diam., bears N. 13 3/4° W., 9.6 ft. dist., mkd. 1/4 S2 BT.

At the request of the Douglas County Surveyor's Office, removed the brass cap from the iron post, leaving the iron post in its original position, and place a yellow plastic cap, 1 1/2 ins. diam. inside the iron post, mkd. COUNTY SURVEYOR. Buried the brass cap alongside the true point.

UNITED STATES DEPARTMENT OF THE INTERIOR  
 BUREAU OF LAND MANAGEMENT

Portland, Oregon

The survey represented by this plat, having been correctly executed in accordance with the requirements of law and the regulations of this Bureau, is hereby accepted.

For the Director

*Mary J. M. Havel*

Chief Cadastral Surveyor of Oregon

*July 14, 2020*  
 Date

OFFICIALLY FILED: 8/21/2020