

# TOWNSHIP 30 SOUTH, RANGE 3 WEST, OF THE WILLAMETTE MERIDIAN, OREGON

## DEPENDENT RESURVEY AND SUBDIVISION OF SECTION

FILED  
Date: 9/18/2017 By: JC  
This survey consists of:  
Map: T30-3 2017-1  
Narrative: VOL. 58 PAGES  
Corner Rpt: 23493-23505

DOUGLAS COUNTY  
SURVEYOR

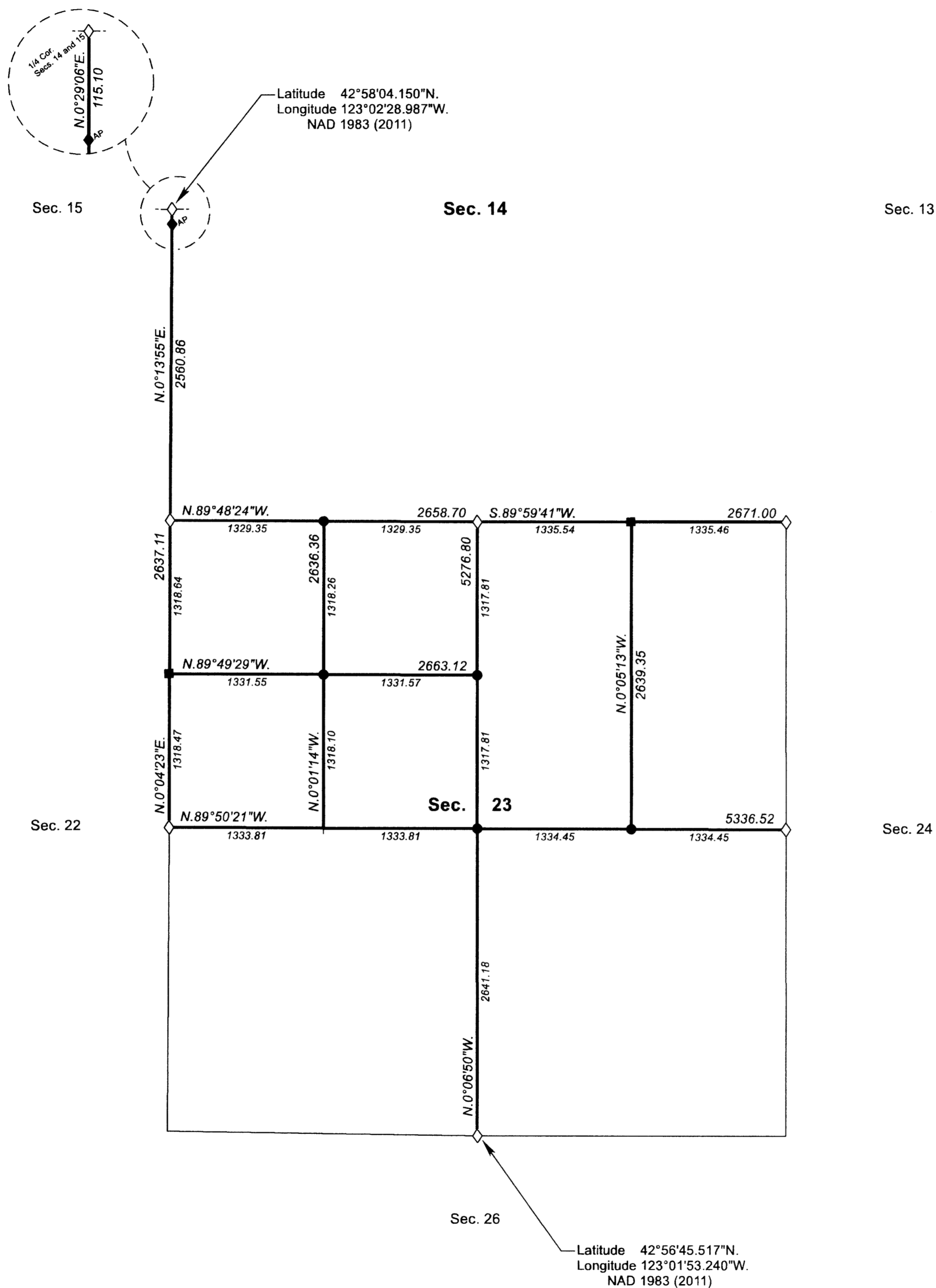
A history of surveys, corner descriptions, and other relevant information are contained in the field notes.

This plat represents the dependent resurvey of a portion of the subdivisional lines, designed to restore the corners in their true original locations according to the best available evidence, and the subdivision of section 23, Township 30 South, Range 3 West, Willamette Meridian, Oregon.

Official areas based on the measurements of this survey have been returned for Federal interest land where indicated. Aliquot part legal subdivisions retain their aliquot characteristics and refer to precisely the same land as that which was previously identified by its original survey or description. Except as indicated hereon, the lottings and areas are as shown on the plat approved June 29, 1895.

Survey executed by Jeffrey O. Covington, Cadastral Surveyor, beginning September 28, 2015, and completed April 13, 2017, pursuant to special instructions approved September 3, 2015, for Group No. 2813, Oregon.

OFFICIALLY FILED: 7/20/2017



LEGAL SUBDIVISION	OFFICIAL ACRES
SECTION 23	
NW1/4 NW1/4	40.27
SW1/4 NW1/4	40.33
SE1/4 NW1/4	40.32
TOTAL AREA	120.92
FEDERAL INTEREST LAND RESURVEYED	

LEGEND	
◇	Original corner previously remonumented
◆	Original corner remonumented this survey
■	Corner previously established or reestablished; remonumented this survey
●	Corner established or reestablished this survey
+	Corner point calculated, no monument set

UNITED STATES DEPARTMENT OF THE INTERIOR  
BUREAU OF LAND MANAGEMENT  
Portland, Oregon

This plat is strictly conformable to the approved field notes, and the survey, having been correctly executed in accordance with the requirements of law and the regulations of this Bureau, is hereby accepted.

For the Director  
*Mary J. M. Hartzel*  
Chief Cadastral Surveyor of Oregon

*June 16, 2017*  
Date

