

TOWNSHIP 30 SOUTH, RANGE 3 WEST, OF THE WILLAMETTE MERIDIAN, OREGON

DEPENDENT RESURVEY AND SUBDIVISION OF SECTIONS

FILED
 Date: 9/15/2011 By: JC
 This survey consists of:
 Map: VOL 57
 Narrative: PAGES
 Corner Rpt: 22504-22533

DOUGLAS COUNTY
 SURVEYOR

A history of surveys is contained in the field notes.

This plat represents a dependent resurvey of a portion of the south boundary and subdivisional lines, T. 30 S., R. 3 W., Willamette Meridian, Oregon, designed to restore the corners in their true original locations according to the best available evidence, and the subdivision of sections 29 and 33.

The survey was performed utilizing both conventional (directly measured angles and distances) and NAVSTAR Global Positioning System (GPS) satellite techniques. The GPS measurements utilized dual frequency, carrier phase GPS receivers. The baselines were computed in and adjusted by least squares analysis using Trimble Geomatics Office (TGO), version 1.62. Conventionally measured distances and directions have been adjusted by Cadastral Measurement Management for Windows (WinCMM), computer software that incorporates a least squares adjustment routine. The adjusted bearings and distances are reported to the nearest second and 0.01 foot.

Actual quantity acreages have been returned for Federal interest lands where indicated. Changes in the official acreage of land described by aliquot part or lot number do not alter its description. Further subdivision of aliquot parts shall be in accordance with the Manual. Further subdivision of official lots may only be by supplemental plat or official survey. Official acreage and lot designations of Federal interest land not affected by this survey are as shown on the plat approved June 29, 1895, and accepted December 27, 1895, and the plat approved October 31, 1925.

The survey was executed by Timothy J. Moore, Cadastral Surveyor, and Robert H. Browning, Surveying Technician, beginning February 2, 2006, and completed April 20, 2006, pursuant to Special Instructions dated September 8, 2005, under Group Number 2127, Oregon.

LEGEND

- ◊ Original corner previously remonumented
- ◆ Original corner remonumented this survey
- Corner previously established or reestablished
- Corner previously established or reestablished; remonumented this survey
- Corner established or reestablished this survey
- + Corner point calculated, no monument set

UNITED STATES DEPARTMENT OF THE INTERIOR
 BUREAU OF LAND MANAGEMENT

Portland, Oregon

This plat is strictly conformable to the approved field notes, and the survey, having been correctly executed in accordance with the requirements of law and the regulations of this Bureau, is hereby accepted.

For the Director

Mary J. M. Hunt

Chief Cadastral Surveyor of Oregon

May 2, 2011
 Date

Sec. 19

Sec. 20

Sec. 30

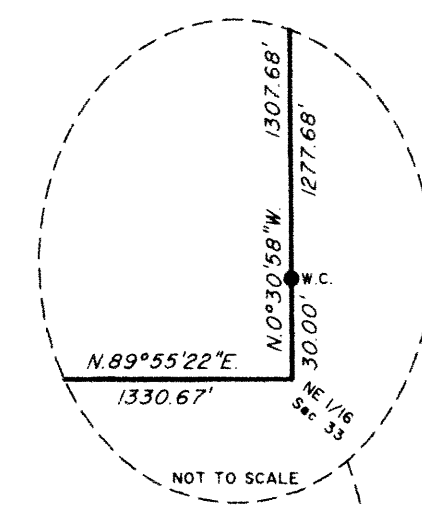
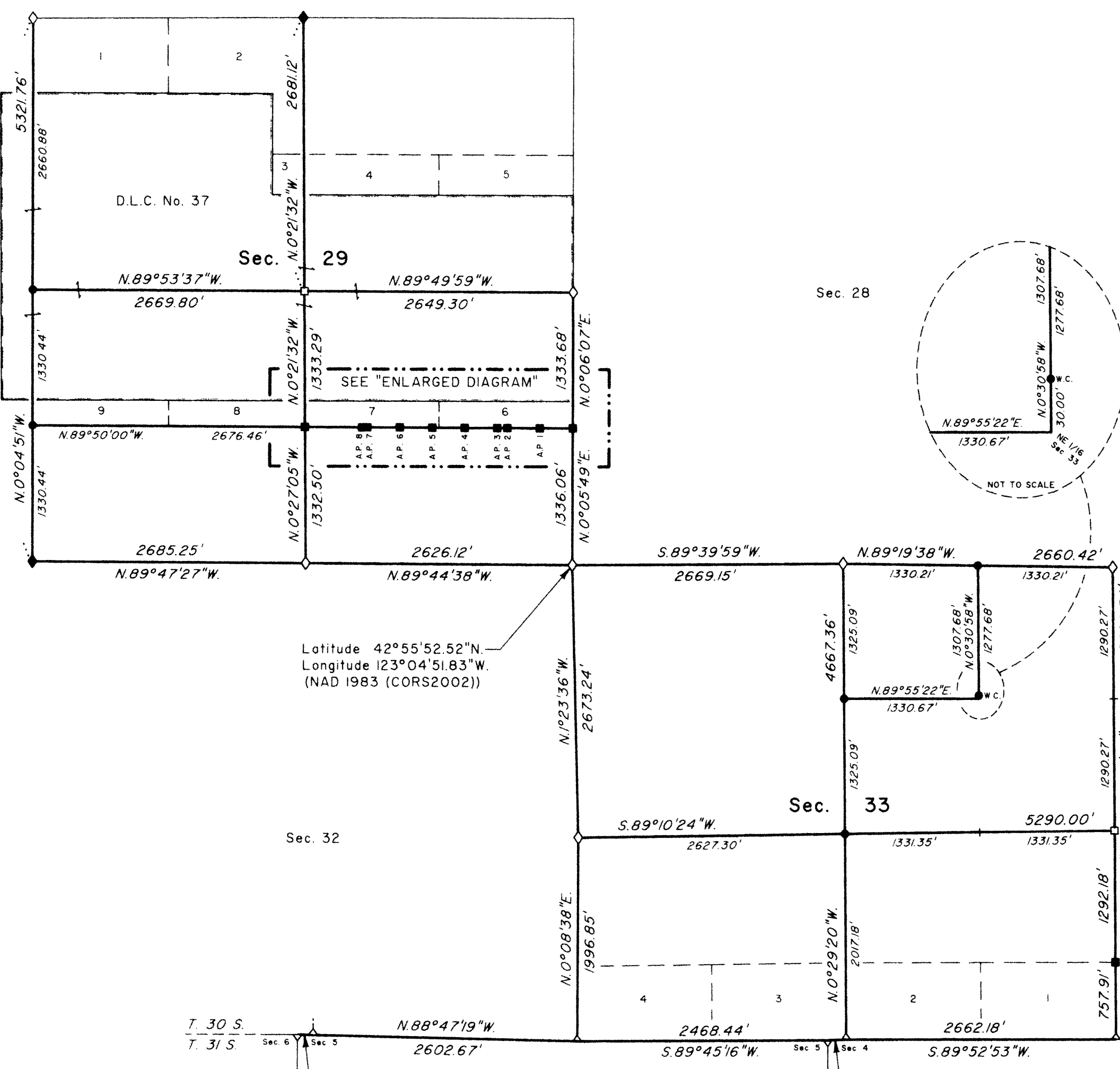
Sec. 28

Sec. 27

Sec. 31

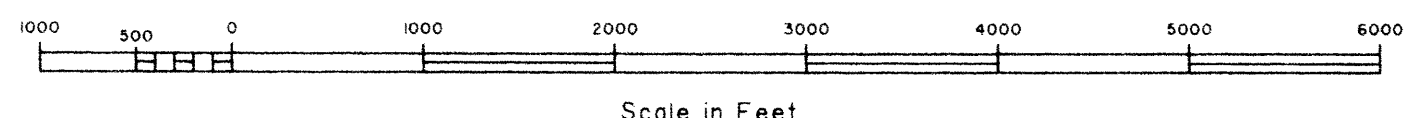
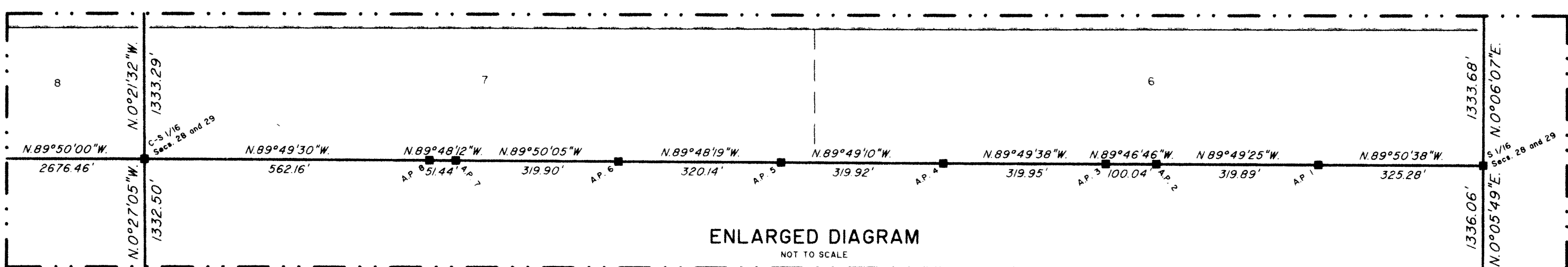
Sec. 32

Sec. 34



LEGAL SUBDIVISION	OFFICIAL ACRES
SECTION 29	
SW1/4 SW1/4	40.96
SE1/4 SW1/4	40.98
SW1/4 SE1/4	40.30
SE1/4 SE1/4	40.33
SECTION 33	
NW1/4 NE1/4	40.20
NE1/4 NW1/4	40.52
NW1/4 NW1/4	40.70
SW1/4 NW1/4	40.38
SE1/4 NW1/4	40.21
NE1/4 SW1/4	38.15
NW1/4 SW1/4	38.14
NE1/4 SE1/4	39.25
NW1/4 SE1/4	38.80
LOT 1	23.46
LOT 2	23.41
LOT 3	23.37
LOT 4	23.32

Latitude 42°55'52.52"N
 Longitude 123°04'51.83"W
 (NAD 1983 (CORS2002))



OFFICIALLY FILED: 7/28/2011