

TOWNSHIP 30 SOUTH, RANGE 3 WEST, OF THE WILLAMETTE MERIDIAN, OREGON

RETRACEMENT

DOUGLAS COUNTY
SURVEYOR

A history of surveys is contained in the field notes.

This plat represents the retracement of a portion of the subdivisional lines, T. 30 S., R. 3 W., Willamette Meridian, Oregon.

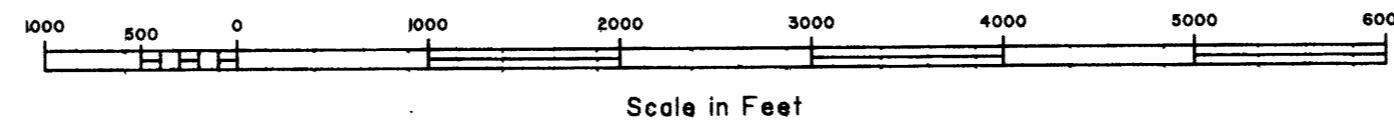
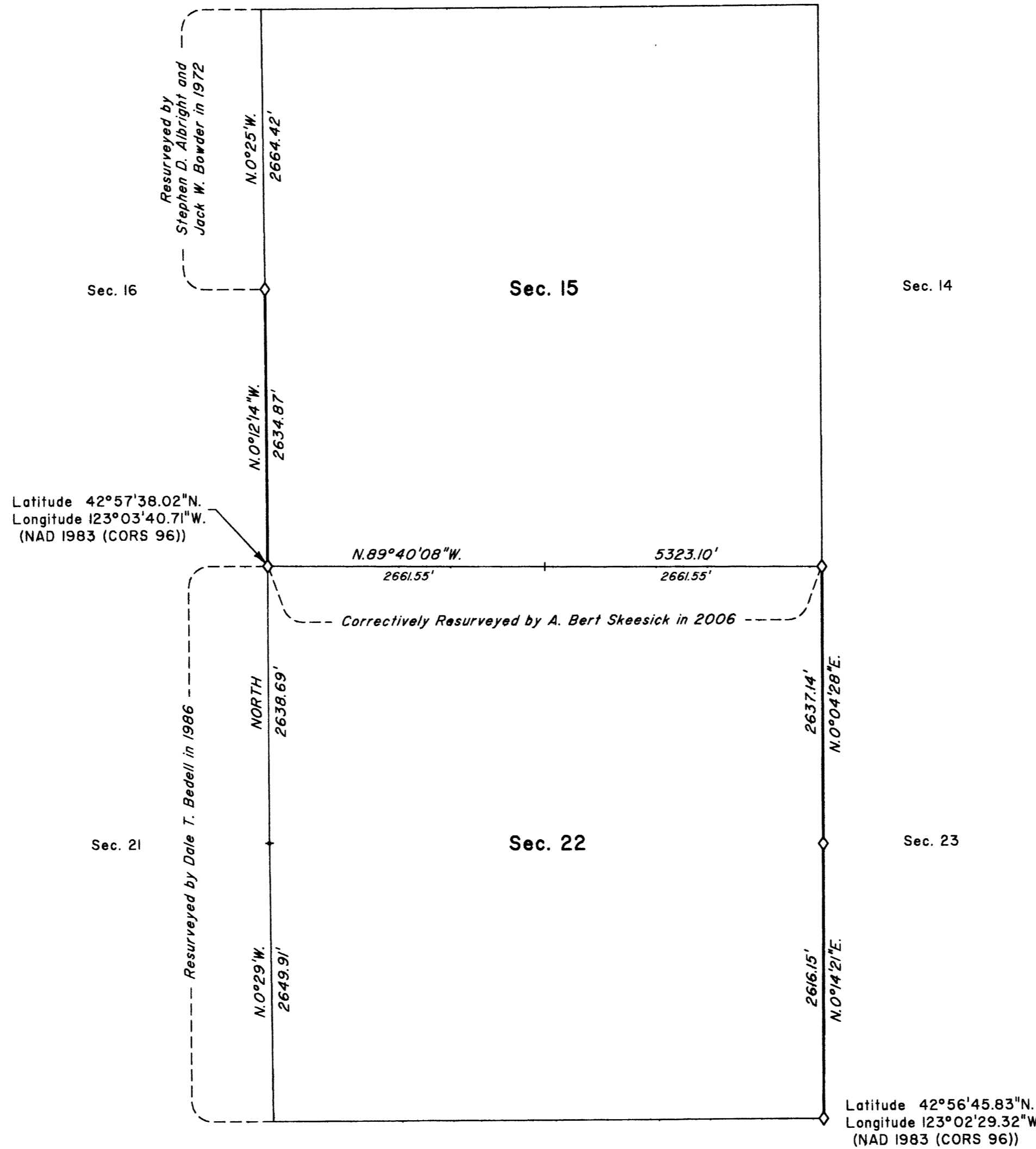
The survey was performed utilizing both conventional (directly measured angles and distances) and NAVSTAR Global Positioning System (GPS) satellite techniques. The GPS measurements utilized dual frequency, carrier phase GPS receivers. The baselines were computed in and adjusted using a least squares adjustment routine. Conventionally measured distances and directions have been adjusted using a least squares adjustment routine. The adjusted bearings and distances are reported to the nearest second and 0.01 foot. Only those lines bounding or crossing public lands were blazed.

The lottings and areas are as shown on the plat approved June 29, 1895.

This survey was executed by Kenneth W. Saveland, Cadastral Surveyor, beginning May 14, 2008 and completed May 29, 2008, pursuant to Special Instructions dated March 16, 2007, approved March 21, 2007, under Group Number 2300, Oregon, Administrative File Number 0803.



Latitude 42°57'38.02"N.
Longitude 123°03'40.71"W.
(NAD 1983 (CORS 96))



THIS BLM RESURVEY CONSISTS OF THIS MAP ONLY
THERE ARE NO SEPARATE FIELD NOTES

B.C.W.

LEGEND

◊ Original corner previously remonumented

UNITED STATES DEPARTMENT OF THE INTERIOR
BUREAU OF LAND MANAGEMENT

Portland, Oregon

This plat is strictly conformable to the approved field notes, and the survey, having been correctly executed in accordance with the requirements of law and the regulations of this Bureau, is hereby accepted.

For the Director

Kenneth W. Saveland

Chief Cadastral Surveyor of Oregon

February 18, 2011
Date

OFFICIALLY FILED: 4/13/2011