

FILED
 Date: 11/18/2008 By: JC
 This survey consists of:
 Map: COPY OF MAP IN BLM VOL. 105
 Narrative:
 Corner Rpt: PAGE 21501
 DOUGLAS COUNTY
 SURVEYOR

TOWNSHIP 30 SOUTH, RANGE 3 WEST, OF THE WILLAMETTE MERIDIAN, OREGON

SHEET 1 OF 4

RETRACEMENT, REMONUMENTATION AND REHABILITATION

This plat represents the entire record of the retracement of a portion of the subdivisional lines, and rehabilitation or remonumentation of certain corner points in T. 30 S., R. 3 W., Willamette Meridian, Oregon.

The history of surveys pertaining to this retracement and rehabilitation is as follows:

In 1857, Dennis Hathorn, U.S. Deputy Surveyor, surveyed a portion of the subdivisional lines.

In 1893, William M. Bushey, U.S. Deputy Surveyor, completed the survey of the subdivisional lines.

In 1965, John M. Jelley, Cadastral Surveyor, resurveyed a portion of the subdivisional lines and subdivided Section 7.

In 1972, Stephen D. Albright and Jack W. Bowder, Cadastral Surveyors, resurveyed a portion of the subdivisional lines.

In 1983-84, Wayne L. Rogers, Lance J. Bishop, and James L. White, Cadastral Surveyors, resurveyed a portion of the subdivisional lines and subdivided Sections 19 and 35.

In 2000, Timothy J. Moore, Cadastral Surveyor, and Robert H. Browning, Surveying Technician, resurveyed a portion of the subdivisional lines.

This retracement, remonumentation, and rehabilitation were executed by A. Bert Skeesick, Cadastral Surveyor, and Robert H. Browning, Surveying Technician, November 16, 2004, and completed February 17, 2005, pursuant to Special Instructions for Group 2000, dated February 22, 2002; Group 2100, dated March 8, 2004; and Group 2300, dated March 16, 2007; under Assignment Instructions dated November 16, 2004, and Group 2100 re-Assignment dated March 16, 2007. They were assisted by Robert NMI Durning and Thomas A. Hollamon, Surveying Technicians.

The retracement data were thoroughly verified and only the true line data is given hereon.

The directions of the lines are based on the true meridian as determined by direct solar observations.

The retracement was performed utilizing both conventional (directly measured angles and distances) and NAVSTAR Global Positioning System (GPS) satellite techniques. The GPS measurements utilized dual frequency, carrier phase GPS receivers. The baselines were computed in and adjusted by computer software utilizing a least squares analysis. An analysis of the unadjusted conventional field data assured a closure not exceeding 1:4000 in error. Conventionally measured distances and directions have been adjusted by computer software that incorporates a least squares adjustment routine. The adjusted bearings and distances are reported to the nearest second and 0.01 foot.

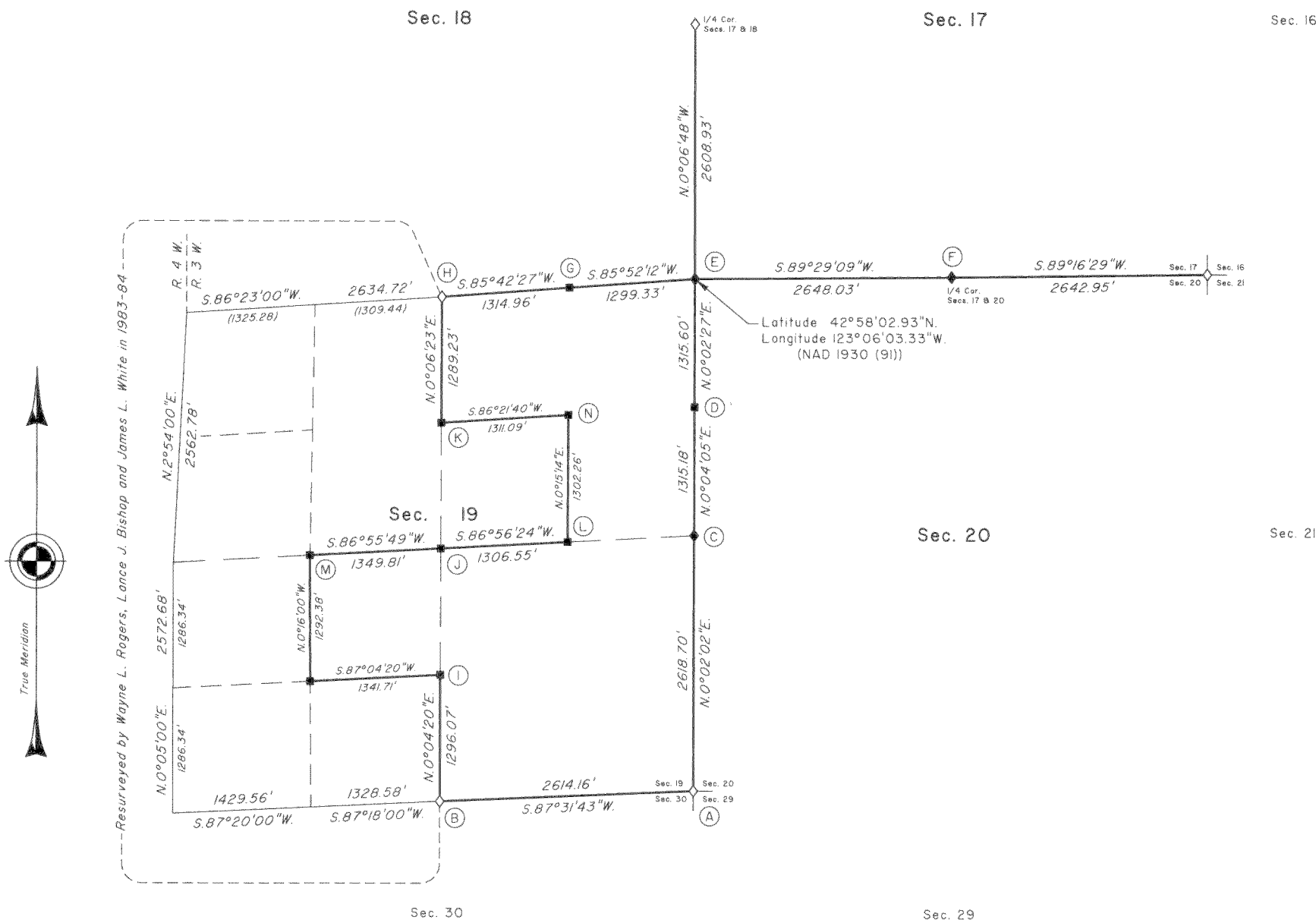
The description of the corner of Sections 16, 17, 20, and 21 is as reported by Albright and Bowder in 1972.

The description of the SW 1/16th section corner of Section 19 is as reported by Rogers, et al, in 1983-84.

The description of the 1/4 section corner of Sections 17 and 18 is as reported by Moore and Browning in 2000.

All new bearing trees have a 2 1/2 inch x 1/4 inch nail driven at the base on right side center.

The geodetic position shown hereon is as reported in the resurvey by Moore and Browning in 2000.



We, A. Bert Skeesick, Cadastral Surveyor, and Robert H. Browning, Surveying Technician, HEREBY CERTIFY upon honor that in pursuance of Special Instructions bearing the date of the 22nd day of February, 2002, the 8th day of March 2004, and the 16th day of March, 2007, we have retraced a portion of the subdivisional lines and rehabilitated and remonumented certain corner points in Township 30 South, Range 3 West, Willamette Meridian, Oregon. Said retracement, remonumentation, and rehabilitation has been executed in strict conformity with said Special Instructions, the Manual of Instructions for the Survey of the Public Lands of the United States, and in specific manner described on this plat.

A. Bert Skeesick 10/06/2008
 Cadastral Surveyor Date

Robert H. Browning 10-06-08
 Surveying Technician Date

LEGEND

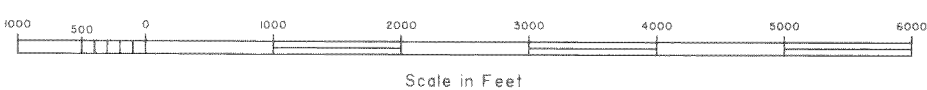
- ◊ Original corner previously remonumented
- ◆ Original corner rehabilitated this survey
- Corner previously established or reestablished; rehabilitated this survey

UNITED STATES DEPARTMENT OF THE INTERIOR
 BUREAU OF LAND MANAGEMENT

Portland, Oregon

The retracement and rehabilitation represented by this plat, having been correctly executed in accordance with the requirements of law and the regulations of this Bureau, is hereby accepted.

For the Director
John P. Rasmussen
 Chief Cadastral Surveyor of Oregon



10/16/2008
 Date

TOWNSHIP 30 SOUTH, RANGE 3 WEST, OF THE WILLAMETTE MERIDIAN, OREGON

SHEET 2 OF 4

RETRACEMENT, REMONUMENTATION AND REHABILITATION

FILED

Date: 11/18/2008 By: JC

This survey consists of:

Map: COPY OF MAP IN BLM VOL. 55

Narrative: _____

Corner Rpt: PAGE 21502

DOUGLAS COUNTY
SURVEYOR

(A) The cor. of secs. 19, 20, 29, and 30, monumented with an iron post, 1 1/4 ins. diam., firmly set, projecting 14 ins. above the ground, with brass cap mkd. as reported by Rogers, et al, in 1983-84; from which the remains of an original bearing tree

A burnt oak stump, 23 ins. diam., bears S. 8° W., 138.6 ft. dist., with no marks visible.

and the remains of a bearing tree reported by Rogers, et al

A root hole bears S. 48° W., 25.7 ft. dist., no trunk remains.

and the remains of bearing trees mkd. by Rogers, et al

A roothole bears N. 32° E., 88.4 ft. dist., no trunk remains.

A roothole bears S. 80° E., 133.3 ft. dist., no trunk remains.

A burnt fir snag, 13 ins. diam., bears N. 59 1/2° W., 100.3 ft. dist., with no marks visible.

and new accessories

A rebar, 30 ins. long, 5/8 in. diam., driven 27 ins. in the ground for a reference monument, bears S. 45° W., 7.50 ft. dist., with aluminum cap mkd. RM T30S R3W S30 7.50 FT. TO COR. 2004 and an arrow pointing to the cor.

A rebar, 30 ins. long, 5/8 in. diam., driven 27 ins. in the ground for a reference monument, bears N. 45° W., 7.50 ft. dist., with aluminum cap mkd. RM T30S R3W S19 7.50 FT. TO COR. 2004 and an arrow pointing to the cor.

(B) The 1/4 sec. cor. of secs. 19 and 30, monumented with an iron post, 1 1/4 ins. diam., firmly set, projecting 14 ins. above the ground, with brass cap mkd. as reported by Rogers, et al, in 1983-84; from which the remains of an original bearing tree

A burnt and sawed fir stump, 27 ins. diam., bears S. 80° E., 25.7 ft. dist., with no marks visible.

and remains of bearing trees reported by Rogers, et al

A burnt fir snag, 23 ins. diam., bears N. 54° E., 43.6 ft. dist., with no marks visible.

A burnt fir snag, 7 ins. diam., bears S. 42° W., 15.2 ft. dist., with no marks visible.

and new accessories

A rebar, 30 ins. long, 5/8 in. diam., driven 27 ins. in the ground for a reference monument, bears N. 45° E., 7.50 ft. dist., with aluminum cap mkd. RM 1/4 S19 7.5 FT. TO COR. 2004 and an arrow pointing to the cor.

A rebar, 30 ins. long, 5/8 in. diam., driven 28 ins. in the ground for a reference monument, bears S. 45° E., 7.50 ft. dist., with aluminum cap mkd. RM 1/4 S30 7.5 FT. TO COR. 2004 and an arrow pointing to the cor.

(C) The 1/4 sec. cor. of secs. 19 and 20, monumented with an iron post, 2 1/2 ins. diam., firmly set, projecting 4 ins. above the ground, with brass cap mkd. as reported by Rogers, et al in 1983-84; from which the remains of an original bearing tree

A roothole bears N. 30° W., 23.8 ft. dist., no trunk remains.

and the remains of a bearing tree reported by Rogers, et al

A burnt and decayed fir snag, 14 ins. diam., bears S. 26 3/4° E., 29.7 ft. dist., with fragmentary scribe marks visible on a partially healed blaze.

and new accessories

A rebar, 30 ins. long, 5/8 ins. diam., driven 27 ins. in the ground for a reference monument, bears S. 45° E., 7.50 ft. dist., with aluminum cap mkd. RM 1/4 S20 7.5 FT. TO COR. 2004 and an arrow pointing to the cor.

A rebar, 30 ins. long, 5/8 ins. diam., driven 27 ins. in the ground for a reference monument, bears S. 45° W., 7.50 ft. dist., with aluminum cap mkd. RM 1/4 S19 7.5 FT. TO COR. 2004 and an arrow pointing to the corner.

Corner is located N. 60° W., 4.0 ft. dist., of a 4 strand barbed wire fence, with fences extending east and south. Corner is also located South, 15.5 ft. dist., of a dirt road, 12 ft. wide, which bears N. 50° E. and S. 50° W.

(D) The N 1/16 sec. cor. of secs. 19 and 20, monumented with an aluminum post, 2 1/2 ins. diam., firmly set, projecting 8 ins. above the ground, with aluminum cap mkd. as reported by Rogers, et al, in 1983-84 (note cap is rotated 180°); from which the remains of bearing trees mkd. by Rogers, et al

A roothole bears N. 39 3/4° E., 12.5 ft. dist., no trunk remains

A roothole, bears N. 54° W., 39.6 ft. dist., no trunk remains.

and new accessories

A rebar, 30 ins. long, 5/8 in. diam., driven 28 ins. in the ground for a reference monument, bears S. 45° E., 7.50 ft. dist., with aluminum cap mkd. RM N1/16 S20 7.5 FT. TO COR. 2004 and an arrow pointing to the cor.

A rebar, 30 ins. long, 5/8 in. diam., driven 28 ins. in the ground for a reference monument, bears S. 45° W., 7.50 ft. dist., with aluminum cap mkd. RM N1/16 S19 7.5 FT. TO COR. 2004 and an arrow pointing to the cor.

(E) The cor. of secs. 17, 18, 19, and 20, monumented with an iron post, 1 1/2 ins. diam., firmly set, projecting 4 ins. above the ground, with brass cap as reported by Rogers, et al, in 1983-84; from which the remains of original bearing trees

A burnt maple snag, 20 ins. diam., bears N. 18° E., 43.6 ft. dist., with no marks visible.

A burnt, decayed and sawed fir stump, 32 ins. diam., bears S. 78° W., 44.9 ft. dist., with a healed blaze.

and remains of bearing trees reported by Rogers, et al

A burnt and decayed fir snag, size indeterminate, bears N. 46° E., 47.5 ft. dist., with no marks visible.

A cedar, 35 ins. diam., bears S. 31° E., 42.2 ft. dist., with a healed blaze.

A burnt and sawed fir stump, 28 ins. diam., bears S. 43° W., 80.5 ft. dist., with a healed blaze.

and the remains of a bearing tree mkd. by Moore and Browning in 2000

A burnt fir snag, 10 ins. diam., bears S. 70 1/2° E., 78.6 ft. dist., with a healed blaze.

and new accessories

A rebar, 30 ins. long, 5/8 in. diam., driven 28 ins. in the ground for a reference monument, bears S. 45° W., 7.50 ft. dist., with aluminum cap mkd. RM T30S R3W S19 7.5 FT. TO COR. 2004 and an arrow pointing to the cor.

A rebar, 30 ins. long, 5/8 in. diam., driven 28 ins. in the ground for a reference monument, bears N. 45° W., 7.50 ft. dist., with aluminum cap mkd. RM T30S R3W S18 7.5 FT. TO COR. 2004 and an arrow pointing to the cor.

(F) The 1/4 sec. cor. of secs. 17 and 20, perpetuated by John H. Markham, Jr., Registered Professional Engineer No. 2880, in 1952, further perpetuated by James W. Byron, Deputy County Surveyor, in 1963, recorded in the Douglas County Surveyors Record of Government Corners Renewed, T. 30 S., R. 03 W., Point Identifier No. 240400, monumented with an iron post, 1 1/4 ins. diam., firmly set, projecting 18 ins. above the ground (alongside of which is an iron pipe, 1/2 in. diam., firmly set, projecting 8 ins. above the ground), with brass cap mkd.

COUNTY SURVEYORS OFFICE

T 30 S
S 17 R
1/4 ——— 3
S 20 W
1963

from which the remains of the orig. bearing trees

A burnt fir stump, size indeterminate, bears N. 30 1/2° E., 19.1 ft. dist., with no marks visible.

A roothole bears S. 12 1/4° W., 15.5 ft. dist., no trunk remains.

and the remains of a bearing tree mkd. by Markham

A roothole bears S. 37° W., 21.8 ft. dist., no trunk remains.

and the remains of a bearing tree reported by Byron as having been mkd. by Markham (there is no record Markham mkd. this tree)

A burnt madrone snag, 15 ins. diam., bears N. 52 1/4° E., 40.5 ft. dist., with no marks visible.

and new accessories

A rebar, 30 ins. long, 5/8 in. diam., driven 27 ins. in the ground for a reference monument, bears N. 45° E., 7.50 ft. dist., with aluminum cap mkd. RM 1/4 S17 7.5 FT. TO COR. 2004 and an arrow pointing to the cor.

A rebar, 30 ins. long, 5/8 in. diam., driven 28 ins. in the ground for a reference monument, bears S. 45° E., 7.50 ft. dist., with aluminum cap mkd. RM 1/4 S20 7.5 FT. TO COR. 2004 and an arrow pointing to the cor.

UNITED STATES DEPARTMENT OF THE INTERIOR
BUREAU OF LAND MANAGEMENT

Portland, Oregon

The retracement and rehabilitation represented by this plat, having been correctly executed in accordance with the requirements of law and the regulations of this Bureau, is hereby accepted.

For the Director

John P. Ramsworth, Acting

Chief Cadastral Surveyor of Oregon

10/16/2008

Date

TOWNSHIP 30 SOUTH, RANGE 3 WEST, OF THE WILLAMETTE MERIDIAN, OREGON

SHEET 3 OF 4

RETRACEMENT, REMONUMENTATION AND REHABILITATION

FILED

Date: 11/18/2008 By: JC

This survey consists of:

-Map: COPY OF MAP IN BLM VOL. 55

Narrative:

Corner Rpt: PAGE 21503

DOUGLAS COUNTY
SURVEYOR

(G) The E 1/16 sec. cor. of secs. 18 and 19, monumented with an aluminum post, 2 1/2 ins. diam., firmly set projecting 8 ins. above the ground, (alongside of which is an angle iron, 1/4 x 1/4 ins., firmly set, projecting 8 ins. above the ground), with aluminum cap mkd. as reported by Rogers, et al. in 1983-84; from which the remains of a bearing reported by Rogers, et al.

A root-hole with burnt fragments of a madrone stump, bears N 47° E., 20.1 ft. dist., with no marks visible.

and the remains of a bearing tree mkd. by Rogers, et al.

A burnt fir stump, 7 ins. diam., bears S. 25 1/2° E., 23.8 ft. dist., with no marks visible.

and new accessories

A rebar, 30 ins. long, 5/8 ins. diam., driven 28 ins. in the ground for a reference monument, bears S 23° E., 7.70 ft. dist., with aluminum cap mkd. RM E1/16 S19 7.7 FT. TO COR. 2005 and an arrow pointing to the cor.

A rebar, 30 ins. long, 5/8 ins. diam., driven 28 ins. in the ground for a reference monument, bears N 26° E., 7.50 ft. dist., with aluminum cap mkd. RM E1/16 S18 7.5 FT. TO COR. 2005 and an arrow pointing to the cor.

(H) The 1/4 sec. cor. of secs. 18 and 19, monumented with an iron post, 2 1/2 ins. diam., firmly set, projecting 1 in. above the ground, with brass cap mkd. as reported by Rogers, et al. in 1983-84; from which the remains of the bearing trees reported by Rogers, et al.

A root-hole bears S 56° W., 75.2 ft. dist., no trunk remains.

A burnt fir snag, 13 ins. diam., bears S. 58 1/2° W., 42.2 ft. dist., with no marks visible.

A root-hole bears N 25° W., 18.5 ft. dist., no trunk remains.

A root-hole bears N 65° W., 73.9 ft. dist., no trunk remains.

and new accessories

A rebar, 30 ins. long, 5/8 in. diam., driven 28 ins. in the ground for a reference monument, bears South, 7.50 ft. dist., with aluminum cap mkd. RM 1/4 S19 7.5 FT. TO COR. 2004 and an arrow pointing to the cor.

A rebar, 30 ins. long, 5/8 ins. diam., driven 28 ins. in the ground for a reference monument, bears East, 7.50 ft. dist., with aluminum cap mkd. RM 1/4 S19 7.5 FT. TO COR. 2004 and an arrow pointing to the cor.

(I) The center S 1/16 sec. cor. of sec. 19, monumented with an aluminum post, 2 1/2 ins. diam., projecting 4 ins. above the ground, with aluminum cap mkd. as reported by Rogers, et al. in 1983-84; from which the remains of bearing trees mkd. by Rogers, et al.

A burnt fir stump, 11 ins. diam., bears S 47 1/2° E., 38.3 ft. dist., with no marks visible.

A burnt fir stump, 20 ins. diam., bears N 20° W., 26.7 ft. dist., with no marks visible.

and new accessories

A rebar, 30 ins. long, 5/8 in. diam., driven 26 ins. in the ground for a reference monument, bears S 45° W., 7.50 ft. dist., with aluminum cap mkd. RM CS 1/16 S19 7.5 FT. TO COR. 2004 and an arrow pointing to the cor.

A rebar, 30 ins. long, 5/8 in. diam., driven 27 ins. in the ground for a reference monument, bears N 45° W., 7.50 ft. dist., with aluminum cap mkd. RM CS 1/16 S19 7.5 FT. TO COR. 2004 and an arrow pointing to the cor.

From this corner, a point reported by Rogers, et al., bears S 62° 34' E., 15.44 ft. dist., monumented with an angle iron, 1 1/2 x 1/4 ins., firmly set, projecting 18 ins. above the ground; there is no remaining evidence of the bearing trees reported by Rogers, et al.

(J) The center 1/4 sec. cor. of sec. 19, monumented with an aluminum post, 2 1/2 ins. diam., firmly set, projecting 5 ins. above the ground, with aluminum cap mkd. as reported by Rogers, et al. in 1983-84; from which the remains of bearing trees mkd. by Rogers, Bishop and White.

A burnt and sawed cedar stump, 22 ins. diam., bears S 3° W., 23.8 ft. dist., with no marks visible.

A root-hole, bears N 2° W., 18.8 ft. dist., no trunk remains.

and new accessories

A rebar, 30 ins. long, 5/8 in. diam., driven 27 ins. in the ground for a reference monument, bears N 44 1/2° E., 7.50 ft. dist., with aluminum cap mkd. RM C 1/4 S19 7.5 FT. TO COR. 2004 and an arrow pointing to the cor.

A rebar, 30 ins. long, 5/8 in. diam., driven 27 ins. in the ground for a reference monument, bears N 35 1/2° W., 7.50 ft. dist. with aluminum cap mkd. RM C 1/4 S19 7.5 FT. TO COR. 2004 and an arrow pointing to the cor.

From this corner, a point reported by Rogers, et al., bears S 23° 58' E., 9.8 ft. dist., monumented with an angle iron, 1 1/2 x 1/4 ins., firmly set, 2 ins. below the surface of the ground, from which the remains of a bearing tree reported by Rogers, et al.

A burnt and sawed fir stump, 23 ins. diam., bears S. 1 1/2° E., 8.6 ft. dist., with no marks visible.

(K) The center N 1/16 sec. cor. of sec. 19, monumented with an iron post, 2 1/2 ins. diam., firmly set, projecting 6 ins. above the ground, with a brass cap mkd. as reported by Rogers, et al. in 1983-84; from which the remains of bearing trees mkd. by Rogers, et al.

A burnt fir snag, 33 ins. diam., bears N 62° E., 19.1 ft. dist., with a healed blaze.

and new accessories

A rebar, 30 ins. long, 5/8 in. diam., driven 28 ins. in the ground for a reference monument, bears East, 7.50 ft. dist., with aluminum cap mkd. RM CN 1/16 SEC19 7.5 FT. TO COR. 2004 and an arrow pointing to the cor.

A rebar, 30 ins. long, 5/8 ins. diam., driven 28 ins. in the ground for a reference monument, bears South, 7.50 ft. dist., with aluminum cap mkd. RM CN 1/16 SEC19 7.5 FT. TO COR. 2004 and an arrow pointing to the cor.

From this corner, a point reported by Rogers, et al., bears N 45° 00' E., 1.65 ft. dist., monumented with a rebar, 1 in. diam., firmly set, projecting 16 ins. above the ground; there is no remaining evidence of the bearing trees reported by Rogers, et al.

(L) The center E 1/16 sec. cor. of sec. 19, monumented with an aluminum post, 2 1/2 ins. diam., firmly set, projecting 1 in. above the ground, with aluminum cap mkd. as reported by Rogers, et al. in 1983-84; from which the remains of bearing trees mkd. by Rogers, et al.

A root-hole bears N 33° E., 17.8 ft. dist., no trunk remains.

A root-hole bears S 62° E., 2.6 ft. dist., no trunk remains.

and new accessories

A rebar, 30 ins. long, 5/8 in. diam., driven 29 ins. in the ground for a reference monument, bears N. 45° E., 7.50 ft. dist., with aluminum cap mkd. RM CE 1/16 S19 7.5 FT. TO COR. 2004 and an arrow pointing to the cor.

A rebar, 30 ins. long, 5/8 in. diam., driven 29 ins. in the ground for a reference monument, bears S. 45° E., 7.50 ft. dist., with aluminum cap mkd. RM CE 1/16 S19 7.5 FT. TO COR. 2004 and an arrow pointing to the cor.

From this corner, a point reported by Rogers, et al., bears S 64° 53' E., 9.31 ft. dist.; there is no remaining evidence of the bearing trees reported by Rogers, et al.

(M) The center W 1/16 sec. cor. of sec. 19, monumented with an aluminum post, 2 1/2 ins. diam., firmly set, projecting 4 ins. above the ground, with aluminum cap mkd. as reported by Rogers, et al. in 1983-84; from which the remains of bearing trees mkd. by Rogers, et al.

A burnt oak, 22 ins. diam., bears N 75 1/2° E., 68.0 ft. dist., with a healed double blaze.

A burnt fir, 12 ins. diam., bears S 61° E., 40.9 ft. dist., with a healed double blaze.

and new accessories

A rebar, 30 ins. long, 5/8 in. diam., driven 28 ins. in the ground for a reference monument, bears East, 7.50 ft. dist., with aluminum cap mkd. RM CW 1/16 S19 7.5 FT. TO COR. 2004 and an arrow pointing to the cor.

A rebar, 30 ins. long, 5/8 ins. diam., driven 28 ins. in the ground for a reference monument, bears South, 7.50 ft. dist., with aluminum cap mkd. RM CW 1/16 S19 7.5 FT. TO COR. 2004 and an arrow pointing to the cor.

From this corner, a point reported by Rogers, et al., bears S 69° 49' E., 43.03 ft. dist., monumented with an iron pipe, 1/2 in. diam., firmly set, projecting 4 ins. above the ground, from which the remains of a bearing tree reported by Rogers, et al.

A burnt oak, 19 ins. diam., bears S 69° E., 49.5 ft. dist., with a healed double blaze.

(N) The NE 1/16 sec. cor. of sec. 19, monumented with an aluminum post, 2 1/2 ins. diam., firmly set, projecting 10 ins. above the ground, with aluminum cap mkd. as reported by Rogers, et al.; from which the remains of bearing trees mkd. by Rogers, et al.

A burnt and sawed fir stump, 32 ins. diam., bears N 26° E., 19.8 ft. dist., with a healed blaze.

A burnt and sawed fir stump, 14 ins. diam., bears N. 81° W., 23.8 ft. dist., with no marks visible.

and new accessories

A rebar, 30 ins. long, 5/8 in. diam., driven 28 ins. in the ground for a reference monument, bears South, 7.50 ft. dist., with aluminum cap mkd. RM NE 1/16 S19 7.5 FT. TO COR. 2004 and an arrow pointing to the cor.

A rebar, 30 ins. long, 5/8 in. diam., driven 28 ins. in the ground for a reference monument, bears West, 7.50 ft. dist., with aluminum cap mkd. RM NE 1/16 S19 7.5 FT. TO COR. 2004 and an arrow pointing to the cor.

From this corner, a point established by George J. Wenderoth, Registered Professional Land Surveyor No. 5, in 1950-51, bears N. 77° 04' E., 12.41 ft. dist., recorded in the Douglas County Surveyors Office, Map File No. M42-63, monumented with an angle iron, 1 1/4 x 1/4 ins., firmly set, projecting 9 ins. above the ground, from which the remains of bearing trees mkd. by Wenderoth, reported by Rogers, Bishop and White.

A burnt and sawed fir stump, 27 ins. diam., bears S 65 1/2° E., 23.1 ft. dist., with no marks visible.

A burnt and decayed fir stump, 14 ins. diam., bears S 23° W., 16.5 ft. dist., with no marks visible.

UNITED STATES DEPARTMENT OF THE INTERIOR
BUREAU OF LAND MANAGEMENT

Portland, Oregon

The retracement and rehabilitation represented by this plat, having been correctly executed in accordance with the requirements of law and the regulations of this Bureau, is hereby accepted.

For the Director

John P. Farnsworth, Acting
Chief Cadastral Surveyor of Oregon

10/16/2008
Date

FILED
 Date: 11/18/2008 By: JC
 This survey consists of:
 Map: COPY OF MAP IN BLM VOL. 155
 Narrative:
 Corner Rpt. PAGE 21504

TOWNSHIP 30 SOUTH, RANGE 3 WEST, OF THE WILLAMETTE MERIDIAN, OREGON

SHEET 4 OF 4

DOUGLAS COUNTY
 SURVEYOR

RETRACEMENT, REMONUMENTATION AND REHABILITATION

ⓐ The closing cor. of secs. 33 and 34 only, on the S. bdy. of the Tp., perpetuated by John H. Markham, Jr., Registered Professional Engineer No. 2880, in 1960, further perpetuated by John M. Powell, of the Douglas County Surveyors Office, in 1966, recorded in the Douglas County Surveyors Record of Government Corners Renewed, T. 30 S., R. 03 W., Point Identifier No. 400100, monumented with an iron pipe, 1 1/4 ins. diam., firmly set, badly bent, projecting 12 ins. above the ground (lying on the ground alongside of which is an iron pipe, 24 ins. long, 2 ins. diam., with no cap), with brass cap mkd. COUNTY SURVEYORS OFFICE T30S S33 S34R S4 3W T31S 1966; from which the remains of an orig. bearing tree

ⓑ The closing cor. of secs. 4 and 5, T. 31 S., R. 3 W., on the S. bdy. of the Tp., perpetuated by John H. Markham, Jr., Registered Professional Engineer No. 2880, in 1951, further perpetuated by John M. Powell, of the Douglas County Surveyors Office, in 1966, recorded in the Douglas County Surveyors Record of Government Corners Renewed, T. 31 S., R. 03 W., Point Identifier No. 300700, monumented with an iron pipe, 1 1/2 ins. diam., firmly set, projecting 18 ins. above the ground, (alongside of which is an iron pipe, 1 in. diam., firmly set, projecting 13 ins. above the ground, with no cap), with brass cap mkd.

ⓒ The closing cor. of secs. 32 and 33 only, on the S. bdy. of the Tp., perpetuated by John H. Markham, Jr., Registered Professional Engineer No. 2880, in 1960, from orig. evidence no longer in existence, further perpetuated by John M. Powell, of the Douglas County Surveyors Office, in 1966, recorded in the Douglas County Surveyors Record of Government Corners Renewed, T. 30 S., R. 03 W., Point Identifier No. 300100, monumented with an iron pipe, 1 1/4 ins. diam., firmly set, projecting 9 ins. above the ground, with brass cap incompletely mkd.

ⓓ The 1/4 sec. cor. of secs. 32 and 33, perpetuated by John H. Markham, Jr., Registered Professional Engineer No. 2880, in 1960, recorded in the Douglas County Surveyors Record of Government Corners Renewed, T. 30 S., R. 03 W., Point Identifier No. 300140, monumented with an iron pipe, 28 ins. long, 1 in. diam., firmly set, projecting 8 ins. above the ground, from which the remains of the orig. bearing trees

ⓔ The cor. of secs. 28, 29, 32 and 33, perpetuated by John H. Markham, Jr., Registered Professional Engineer No. 2880, in 1960, recorded in the Douglas County Surveyors Record of Government Corners Renewed, T. 30 S., R. 03 W., Point Identifier No. 300200, monumented with an iron pipe, 1 in. diam., firmly set, projecting 6 ins. above the ground (alongside of which is the displaced original stone, 12x10x20 ins., with 3 notches on the east edge and 1 notch on the west edge), from which the remains of the orig. bearing trees

ⓕ The 1/4 sec. cor. of secs. 28 and 33, perpetuated by John H. Markham, Jr., Registered Professional Engineer No. 2880, in 1951, recorded in the Douglas County Surveyors Record of Government Corners Renewed, T. 30 S., R. 03 W., Point Identifier No. 340200, monumented with an iron pipe, 1 in. diam., 23 ins. long, firmly set, projecting 9 ins. above the ground (iron pipe is set in the center of a decayed stump hole, 40 ins. diam., with outer ring of fir bark), from which the remains of the orig. bearing trees.

COUNTY SURVEYORS OFFICE
 T 30 S
 S 33 R 3 W
 S 5 T S 4
 T 31 S
 1966

COUNTY SURVEYORS OFFICE
 T 30 S
 S 32 S 33
 S 5 R 3 W
 T 31 S

A burnt fir stump, size indeterminate, bears S. 71 1/2° E., 19.8 ft. dist., with no marks visible.

and the remains of bearing trees mkd. by Markham

A burnt roothole bears S. 34° E., 18.0 ft. dist., with no remains visible.

A burnt fir snag, size indeterminate, bears S. 66° W., 15.4 ft. dist., with no marks visible.

A burnt fir stump, 30 ins. diam., bears S. 84° W., 27.4 ft. dist., with a healed blaze.

A burnt fir snag, size indeterminate, bears N. 88° W., 11.9 ft. dist., with no marks visible.

At the corner point.

Drive a finned aluminum rod, 36 ins. long, 3/4 in. diam., 35 ins. in the ground, with aluminum cap mkd.

T 30 S R 3 W
 S 33 S 34
 S 4
 T 31 S
 2004

from which

A rebar, 30 ins. long, 5/8 in. diam., driven 28 ins. in the ground for a reference monument, bears N. 48° E., 7.50 ft. dist., with aluminum cap mkd. RM S34 7.5 FT. TO COR. 2004 and an arrow pointing to the cor.

A rebar, 30 ins. long, 5/8 in. diam., driven 28 ins. in the ground for a reference monument, bears N. 48° W., 7.50 ft. dist., with aluminum cap mkd. RM S33 7.5 FT. TO COR. 2004 and an arrow pointing to the cor.

Deposit a magnet in a white plastic case, the iron pipe with brass cap and the iron pipe without a cap, alongside the finned aluminum rod.

from which the remains of the orig. bearing trees

A roothole bears S. 32 1/2° W., 14.2 ft. dist., no trunk remains.

A decayed and burnt fir stump, 5 ins. diam., bears N. 11 1/2° W., 24.3 ft. dist., with no marks visible.

and the remains of a bearing tree mkd. by Powell

A sawed and burnt fir stump, 13 ins. diam., bears North, 31.8 ft. dist., with no marks visible.

and new accessories

A rebar, 30 ins. long, 5/8 in. diam., driven 25 ins. in the ground for a reference monument, bears S. 5° E., 7.50 ft. dist., with aluminum cap mkd. RM T31S R3W S4 7.5 FT. TO COR. 2005 and an arrow pointing to the cor.

A rebar, 30 ins. long, 5/8 in. diam., driven 28 ins. in the ground for a reference monument, bears S. 85° W., 7.50 ft. dist., with aluminum cap mkd. RM T31S R3W S5 7.5 FT. TO COR. 2005 and an arrow pointing to the cor.

ⓖ The 1/4 sec. cor. of secs. 29 and 32, perpetuated by John H. Markham, Jr., Registered Professional Engineer No. 2880, in 1960, from orig. evidence no longer in existence, further perpetuated by Stephen Flouse, Deputy County Surveyor, in 1980, recorded in the Douglas County Surveyors Record of Government Corners Renewed, T. 30 S., R. 03 W., Point Identifier No. 240200, a truck axle, 36 ins. long, 1 3/4 ins. diam., lying on the ground at record bearing and dist. from the remains of bearing trees mkd. by Markham

A burnt fir stump, 25 ins. diam., bears S. 41° E., 122.0 ft. dist., with scribe marks BT visible on open blaze.

A burnt fir stump, 17 ins. diam., bears N. 73° W., 59.0 ft. dist., with no marks visible.

from which the remains of a bearing tree mkd. by Flouse

A burnt roothole bears N. 21° W., 13.5 ft. dist., no trunk remains.

At the corner point.

Set a stainless steel post, 28 ins. long, 2 1/2 ins. diam., 20 ins. in the ground, with brass cap mkd.

T 30 S R 3 W
 S 29
 1/4
 S 32
 2004

from which

A rebar, 30 ins. long, 5/8 in. diam., driven 30 ins. in the ground for a reference monument, bears S. 47 1/2° W., 7.50 ft. dist., with aluminum cap mkd. RM 1/4 S32 7.5 FT. TO COR. 2004 and an arrow pointing to the cor.

A rebar, 30 ins. long, 5/8 in. diam., driven 28 ins. in the ground for a reference monument, bears N. 46° W., 7.50 ft. dist., with aluminum cap mkd. RM 1/4 S29 7.5 FT. TO COR. 2004 and an arrow pointing to the cor.

Bury the axle inverted and deposit a magnet in a white plastic case at the base of the stainless steel post.

from which the remains of bearing trees mkd. by Markham

A burnt cedar snag, 14 ins. diam., bears N. 10° E., 6.0 ft. dist., with no marks visible.

A burnt cedar snag, 7 ins. diam., bears S. 2 1/2° E., 31.3 ft. dist., with no marks visible.

A burnt cedar snag, 17 ins. diam., bears S. 36 1/2° W., 32.6 ft. dist., with no marks visible.

A burnt cedar snag, 16 ins. diam., bears N. 3 1/2° W., 22.0 ft. dist., with no marks visible.

and new accessories

A rebar, 30 ins. long, 5/8 in. diam., driven 30 ins. in the ground for a reference monument, bears N. 45° E., 7.50 ft. dist., with aluminum cap mkd. RM T30S R3W S33 7.5 FT. TO COR. 2005 and an arrow pointing to the cor.

A rebar, 30 ins. long, 5/8 in. diam., driven 30 ins. in the ground for a reference monument, bears N. 45° W., 7.50 ft. dist., with aluminum cap mkd. RM T30S R3W S32 7.5 FT. TO COR. 2005 and an arrow pointing to the cor.

A fir snag, 23 ins. diam., bears S. 27 1/4° E., 27.1 ft. dist., with no marks visible.

A sawed and decayed fir stump, 37 ins. diam., bears S. 19 1/2° W., 13.9 ft. dist., with no marks visible.

and the remains of bearing trees mkd. by Markham

A sawed and burnt fir stump, 8 ins. diam., bears N. 40° E., 15.3 ft. dist., with fragmentary scribe marks visible on partially healed blaze.

A sawed and burnt cedar stump, 37 ins. diam., bears S. 78° E., 29.5 ft. dist., with no marks visible.

A sawed and burnt fir stump, 15 ins. diam., bears N. 42° W., 10.9 ft. dist., with a healed blaze.

At the corner point

Set a stainless steel post, 28 ins. long, 2 1/2 ins. diam., 24 ins. in the ground, directly over the iron pipe, with brass cap mkd.

T 30 S R 3 W
 1/4
 S 32 S 33
 2005

from which

A fir, 5 ins. diam., bears S. 35° E., 21.7 ft. dist., mkd. 1/4 S33 BT.

A fir, 5 ins. diam., bears S. 56° W., 12.8 ft. dist., mkd. 1/4 S32 BT.

Deposit a magnet in a white plastic case at the base of the stainless steel post.

A roothole bears S. 70° W., 19.8 ft. dist., no trunk remains.

A burnt madrone stump, size indeterminate, bears N. 82° W., 30.4 ft. dist., with no marks visible. (Record N. 68° W.)

and the remains of bearing trees mkd. by Markham

A burnt cedar snag, size indeterminate, bears S. 76° E., 27.0 ft. dist., with no marks visible.

A burnt chinquapin stump, size indeterminate, bears S. 47° W., 9.7 ft. dist., with no marks visible.

A burnt madrone stump, size indeterminate, bears N. 70° W., 36.0 ft. dist., with no marks visible.

At the corner point

Set a stainless steel post, 28 ins. long, 2 1/2 ins. diam., 22 ins. in the ground, directly over the iron pipe, with brass cap mkd.

T 30 S R 3 W
 S 29 S 28
 S 32 S 33
 2004

from which

A rebar, 30 ins. long, 5/8 in. diam., driven 26 ins. in the ground for a reference monument, bears S. 39 1/2° E., 7.50 ft. dist., with aluminum cap mkd. RM T30S R3W S33 7.5 FT. TO COR. 2004 and an arrow pointing to the cor.

A rebar, 30 ins. long, 5/8 in. diam., driven 27 ins. in the ground for a reference monument, bears S. 38 1/2° W., 7.50 ft. dist., with aluminum cap mkd. RM T30S R3W S32 7.5 FT. TO COR. 2004 and an arrow pointing to the cor.

Deposit a magnet in a white plastic case at the base and invert and bury the original stone along the north side of the stainless steel post.

A sawed and burnt fir stump, 52 ins. diam., bears S. 78° E., 64.5 ft. dist., with no marks visible. (Record S. 80° E., 60.7 ft. dist.)

A sawed and burnt fir stump, 33 ins. diam., bears N. 57 1/2° W., 33.0 ft. dist., with no marks visible. (Record N. 65° W.)

and the remains of a bearing tree mkd. by Markham

A maple stump, 7 ins. diam., bears N. 9° W., 17.5 ft. dist., with no marks visible.

At the corner point.

Set a stainless steel post, 28 ins. long, 2 1/2 ins. diam., 25 ins. in the ground, directly over the iron pipe, with brass cap mkd.

T 30 S R 3 W
 S 28
 1/4
 S 33
 2004

from which

A fir, 4 ins. diam., bears S. 77° W., 11.9 ft. dist., mkd. X BT.

A fir, 15 ins. diam., bears N. 1° W., 30.0 ft. dist., mkd. 1/4 S28 BT.

Deposit a magnet in a white plastic case at the base of the stainless steel post.

LEGEND

- ◊ Original corner previously remonumented; rehabilitated this survey
- ◆ Original corner rehabilitated this survey

UNITED STATES DEPARTMENT OF THE INTERIOR
 BUREAU OF LAND MANAGEMENT

Portland, Oregon

The retracement and rehabilitation represented by this plat, having been correctly executed in accordance with the requirements of law and the regulations of this Bureau, is hereby accepted.

For the Director

John P. Ramsworth, Actg.
 Chief Cadastral Surveyor of Oregon

10/16/2008
 Date

