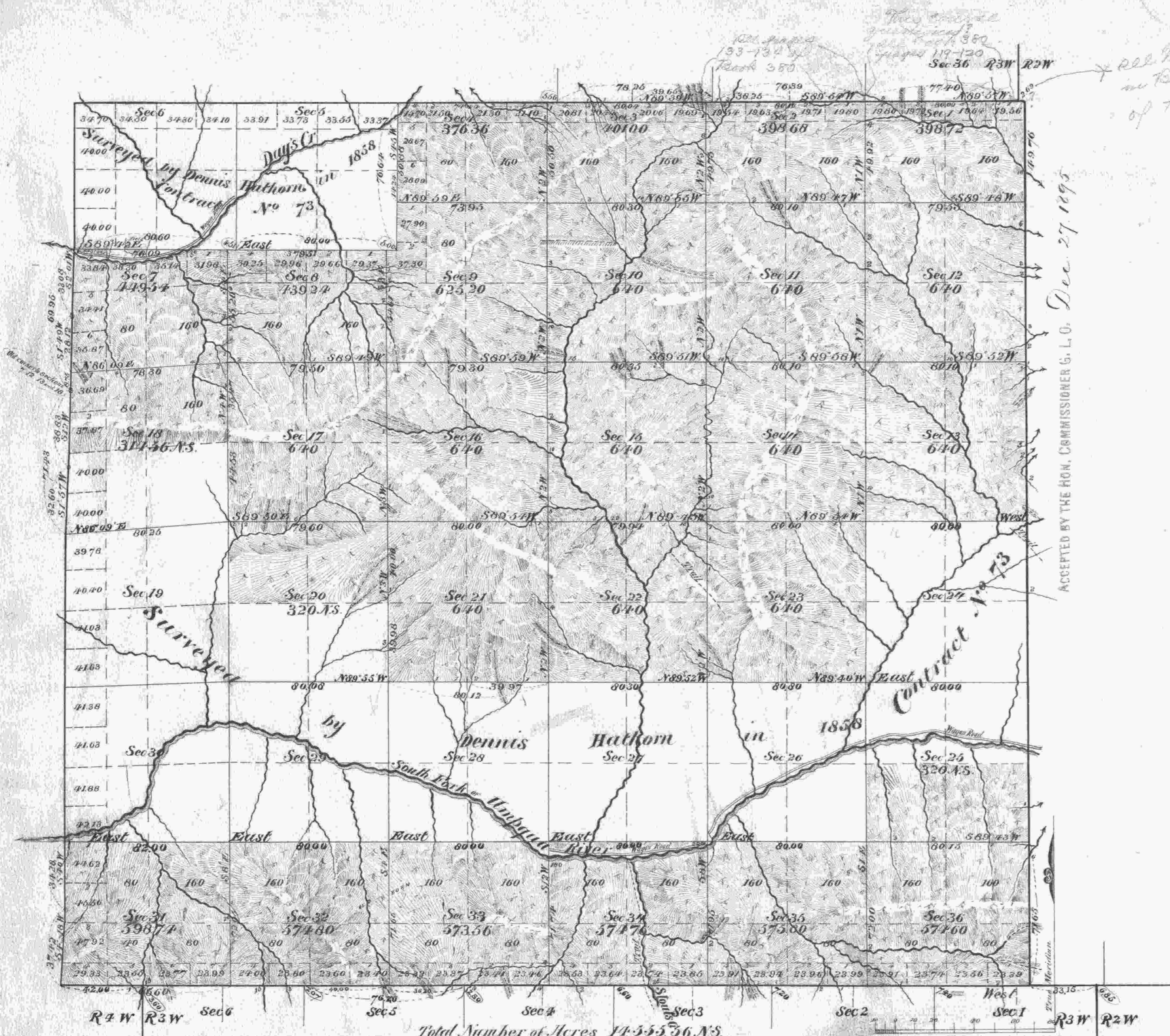


Township N^o 30 South Range N^o 3 West of the Willamette Meridian Oregon

400



See original
133-134 of
Book 380
pages 119-120
Sec 36 R3W R2W
* See Willamette retranscripts in 1909
in Book 484, p. 13; also plat
of T. 30 S. R. 2 W

ACCEPTED BY THE HON. COMMISSIONER G. L. O. Dec. 27. 1895

Total Number of Acres 14,555.56 A.S.

Surveys Designated	By Whom Surveyed	Date of Contract	Amount of Surveys	When Surveyed	Mean Declination
			M. Chs. Lks.		
Township lines E. & S.	William M. Bushey	June 17 1893			
Subdivisions			32 46 28	Oct 6 to Nov 8 1893	18° 45' E
Connections			27 56		
Contract N ^o 620					

The above Map of Township N^o 30 South of Range N^o 3 West of the Willamette Meridian Oregon is strictly conformable to the field notes of the survey thereof on file in this Office which been examined and approved.
 Surveyor General's Office
 Portland Oregon June 29. 1895.
 John C. Arnold,
 Sur. Genl for Oregon.