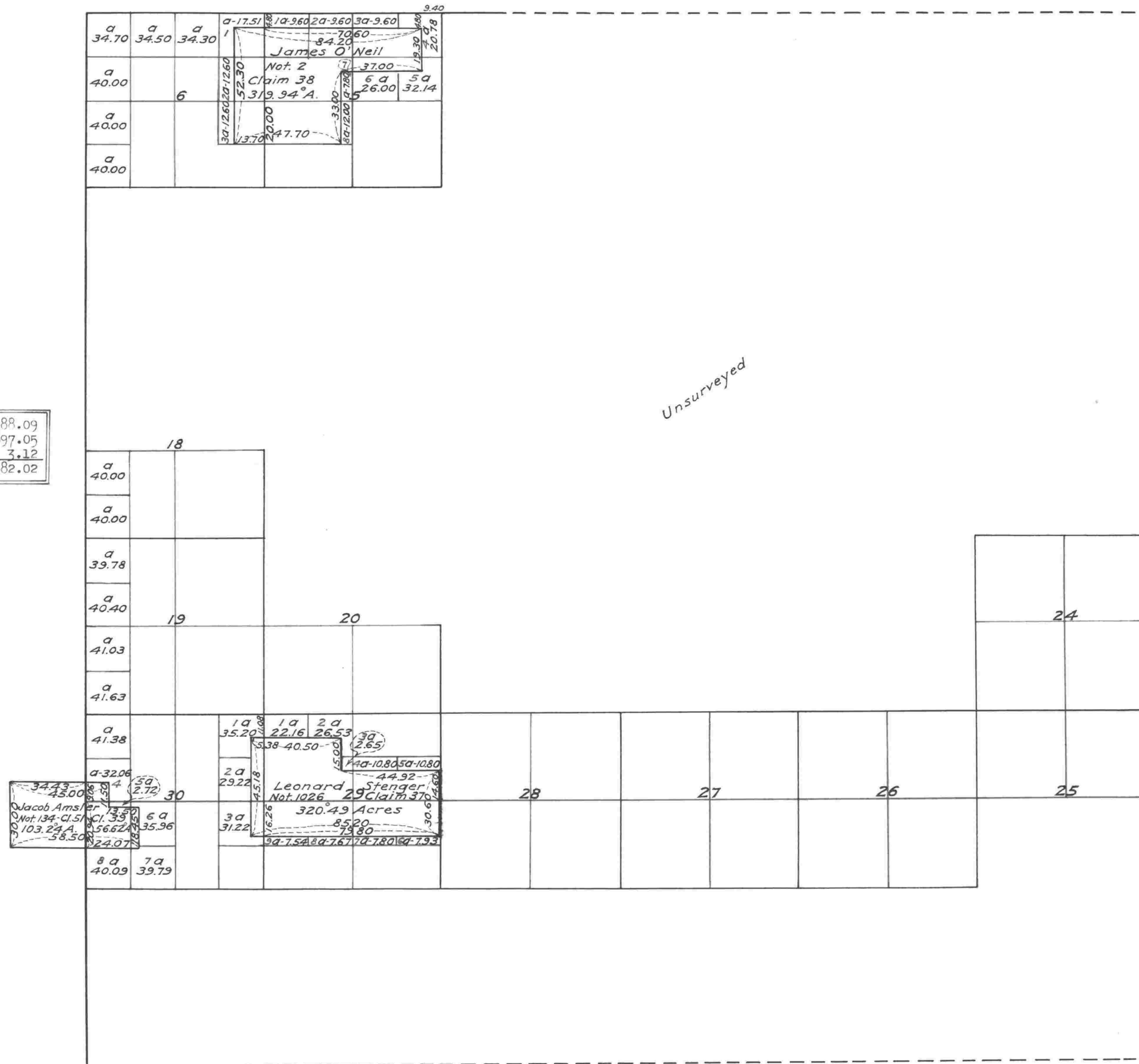


Township No. 30 South, Range No. 3 West of the Willamette Meridian, Oregon.

Aggregate Area of Public Lands	5988.09
" " Private Surveys	697.05
Deduct Error in Computations	3.12
Total returns on Township Plat	6682.02



The above Map of the Survey of Claims in Township No. 30 South of Range No. 3 West of the Willamette Meridian, Oregon, is strictly conformable to the field notes of the Surveys thereof on file in this Office, which have been examined and approved.
 Surveyor General's Office, Ogn.
 Eugene City, October 22 nd, 1860.

(signed) W. W. Chapman.
 Surveyor General of Oregon.

I certify this to be a correct copy of the original plat on file in this office.
 Office of District Cadastral Engineer,
 Portland, Oregon, October 31, 1925.

E. O. Roads
 District Cadastral Engineer.