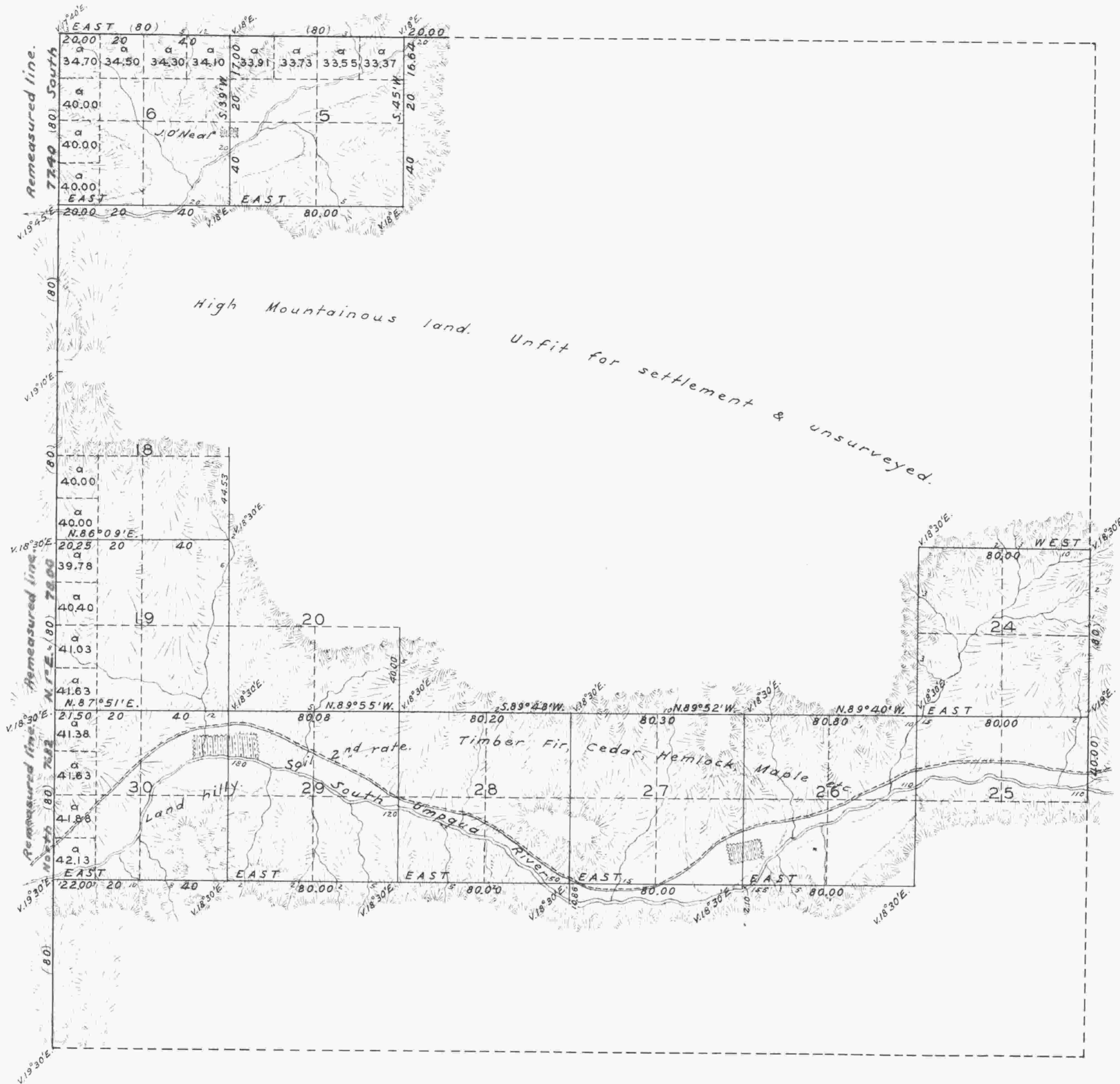


TOWNSHIP N^o 30 SOUTH, RANGE N^o 3 WEST, OF THE WILLAMETTE MERIDIAN, OREGON.



True Meridian.
Var. From 17° 40' to 19° 45' East.
Scale: 40 Chains to an inch.

Surveys designated	By whom surveyed	Contract		Am't. of Surveys			When surveyed.
		No.	Date	Miles	chains	links	
Township Lines	Nathaniel Ford	44	May 30 th , 1854	06	00	00	March 9 th , 1855
Subdivisions	Dennis Hathorn	73	June 8 th , 1857	25	16	26	February 20 th , 1858
Total number of Acres		6682.02					

The above Map of Fractional Township No. 30 South, of Range No. 3 West, of the Willamette Meridian, Territory of Oregon, is strictly conformable to the field notes of the survey thereof on file in this office, which have been examined and approved. Surveyor General's Office, Salem, February 20th, 1858.

(signed)
John S. Zieber.
Sur. Gen. of Oregon.

Public Survey Office,
Portland, Oregon,
October 9, 1946.
I certify this to be a correct copy of the original plat on file in this office.
Joseph A. Gannon
Regional Cadastral Engineer.