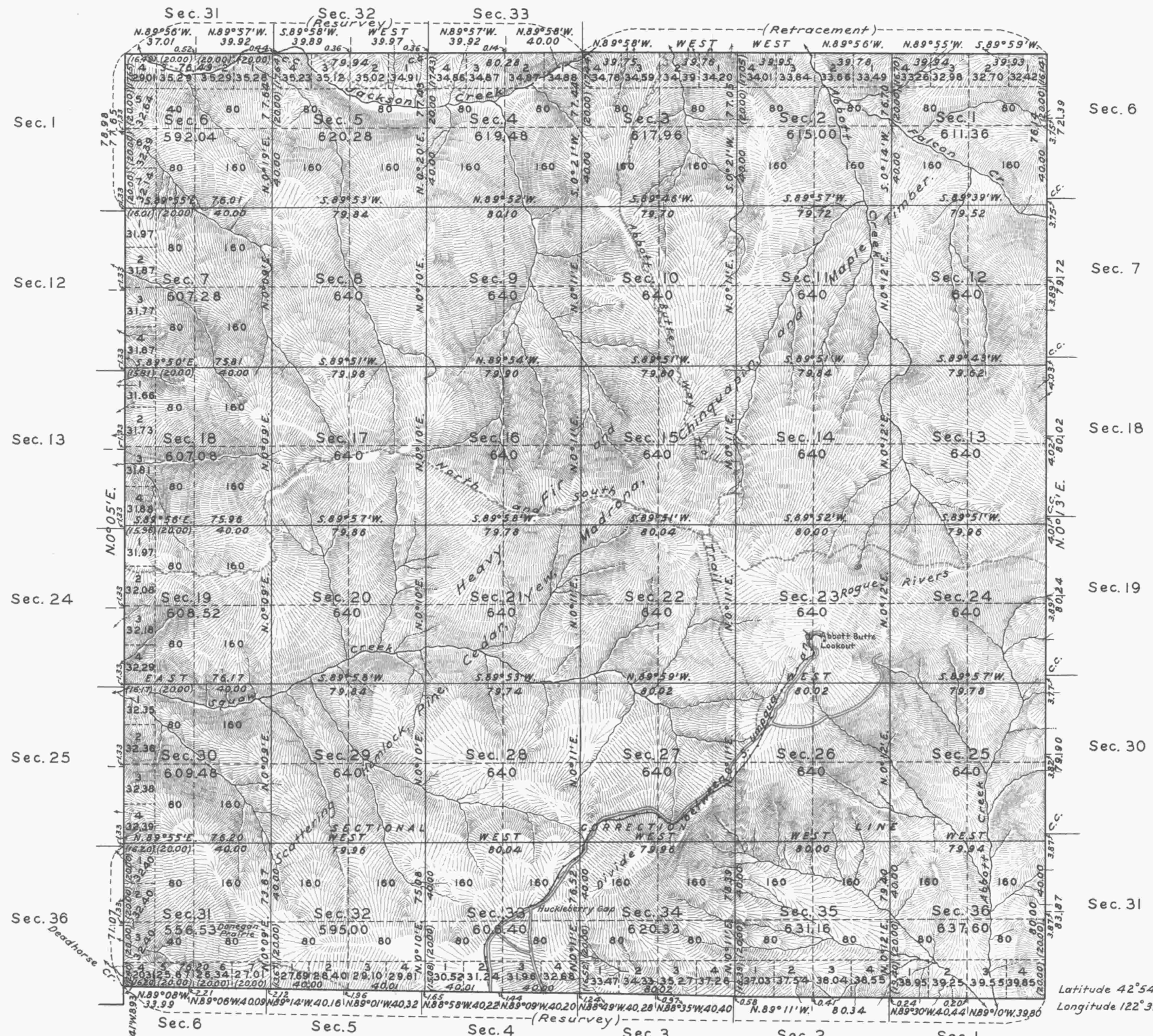


TOWNSHIP No. 30 SOUTH, RANGE No. 2 EAST, OF THE WILLAMETTE MERIDIAN, OREGON.



Mean Magnetic Declination 21° E. Scale: 40 Chains to an Inch. Area 22,555.50 Acres.

LINES DESIGNATED	BY WHOM SURVEYED	GROUP		MILEAGE		WHEN SURVEYED	
		No	DATE	MLS.	CHS.	BEGUN	COMPLETED
Exterior	Leonard Carter George F. Dawson Jr	175	Nov. 21, 1935	17	62.11		
Subdivisional				59	26.43	April 29, 1937	August 6, 1937
Miscellaneous					1.82		

Office of Supervisor of Surveys,
Denver, Colorado, Oct. 31, 1938.
The above plat of Township No. 30 South, Range No. 2 East, of the Willamette Meridian, Oregon, is strictly conformable to the field notes of the survey thereof which have been examined and approved.

Donald D. Cannon
Supervisor of Surveys.

UNITED STATES
DEPARTMENT OF THE INTERIOR
GENERAL LAND OFFICE
Washington, D.C., Mar. 17, 1939.
The survey represented by this plat having been correctly executed in accordance with the requirements of law and the regulations of this office, is hereby accepted.

Antoinette F. Hurd
Assistant Commissioner.