

Date: 9/18/2017 By: JC

This survey consists of:

Map: PLAT:T30-2 2017-1

Narrative: VOL. 58 PAGE

Corner Rpt: 23488-23489

SHEET 1 OF 2

TOWNSHIP 30 SOUTH, RANGE 2 WEST, OF THE WILLAMETTE MERIDIAN, OREGON

DEPENDENT RESURVEY

DOUGLAS COUNTY SURVEYOR

This plat constitutes the entire record of the dependent resurvey of portions of the subdivisional lines, Township 30 South, Range 2 West, Willamette Meridian, Oregon, designed to restore the corners in their true original locations according to the best available evidence.

The history of official surveys pertaining to this survey is as follows:

In 1858, Dennis Hathorn, U.S. Deputy Surveyor, surveyed a portion of the subdivisional lines as shown on the official plat of survey approved February 20, 1858.

In 1909, Fred Mensch, U.S. Deputy Surveyor, retraced a portion of the subdivisional lines, dependently resurveyed a portion of the subdivisional lines, and surveyed the remainder of the subdivisional lines as shown on the official plat of survey approved October 14, 1910.

In 1983, Wayne L. Rogers and Lance J. Bishop, Cadastral Surveyors, dependently resurveyed a portion of the subdivisional lines and subdivided section 29 as shown on the official plat of survey accepted April 5, 1985.

The following county surveyor file, filed in the Douglas County Surveyor's Office, is referred to in subsequent corner descriptions and is referenced by the office name and year.

Date	Name and Registration Number	File Number
1968-70	Douglas County Surveyor's Office	CS54/73

The directions of the lines are based on the true meridian as determined by Global Positioning Systems (GPS) techniques and carried forward by sustained angulation using conventional survey techniques. All measurements along the lines were derived through the use of GPS and conventional survey techniques. Measured distances and directions have been adjusted by computer software that incorporates a least squares adjustment routine. The adjusted mean bearings and mean horizontal ground elevation distances are reported to the nearest second and 0.01 foot.

The lottings and areas are as shown on the plats approved February 20, 1858, and October 14, 1910.

Preliminary to the resurvey, the lines of the official original surveys and resurveys were retraced and a search was made for all corners, lines, other calls of record, and where available, collateral evidence of local surveys and corners. Identified corners were perpetuated in their original positions. The retracement data was thoroughly verified and only the true line field data are given hereon.

Each new bearing tree has a 2 1/2 inch x 1/4 inch magnetic nail (Mag Nail) driven at the base on right side center, unless otherwise noted in the corner description. Only those lines bounding Federal interest land were blazed.

The geographic positions shown hereon were determined by ties from temporary GPS control points utilizing dual frequency, carrier phase GPS receivers, and processed using the National Geodetic Survey's Online Positioning User Service (OPUS).

The survey was executed in accordance with the specifications set forth in the Manual of Surveying Instructions (2009), and the special instructions approved October 23, 2015, for Group No. 2818, Oregon, by Jeffrey O. Covington, Cadastral Surveyor, beginning November 9, 2015, and completed November 23, 2015. He was assisted by Robert NMI Durning and Marc A. Montpas, Surveying Technicians.

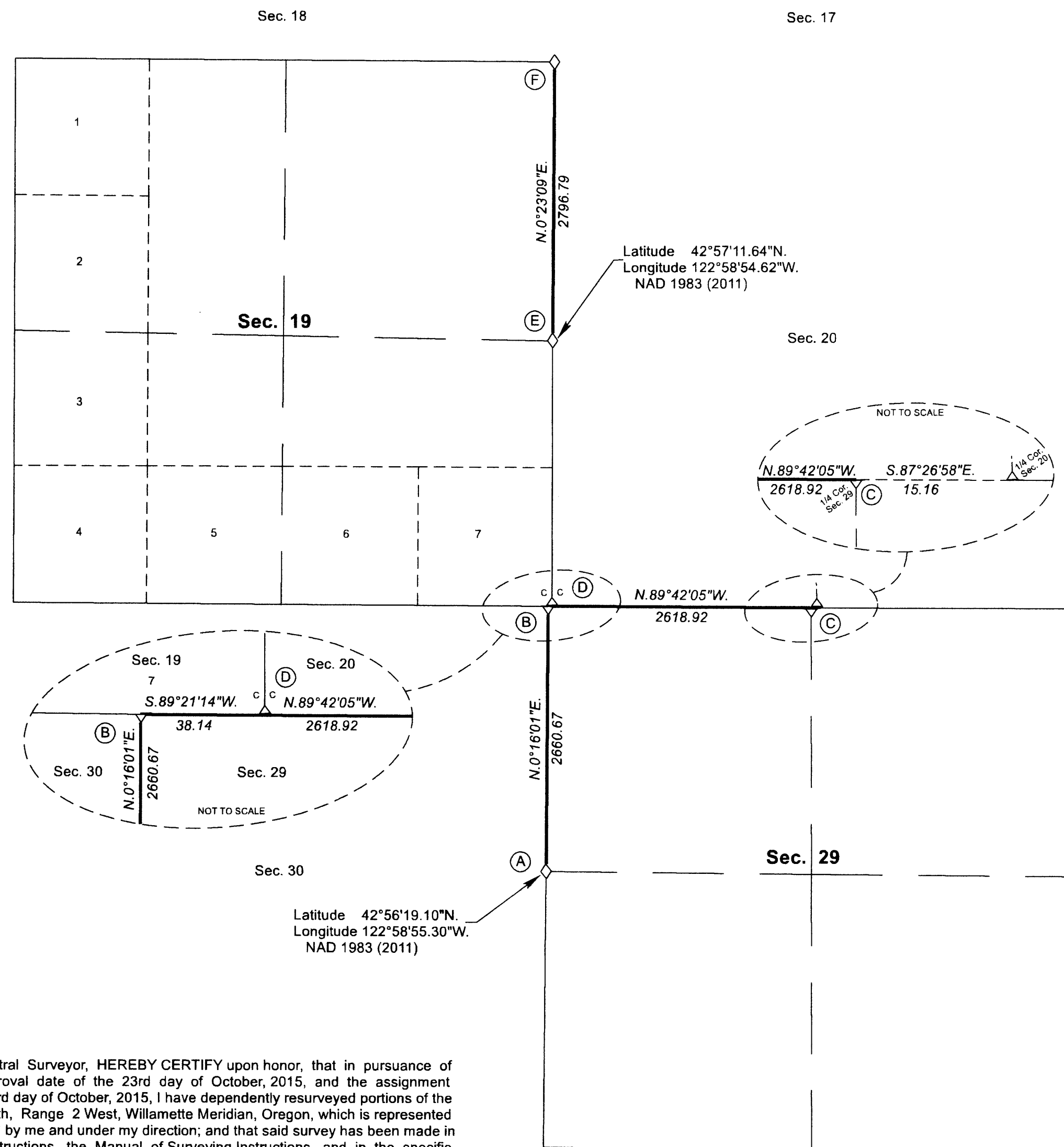
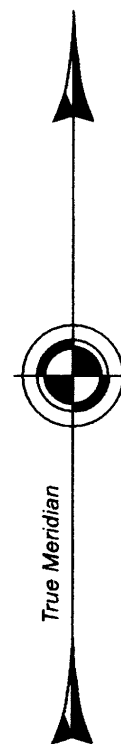
UNITED STATES DEPARTMENT OF THE INTERIOR
BUREAU OF LAND MANAGEMENT

Portland, Oregon

The survey represented by this plat, having been correctly executed in accordance with the requirements of law and the regulations of this Bureau, is hereby accepted.

For the Director
Mary J. M. Harts
Chief Cadastral Surveyor of Oregon

April 18, 2017
Date

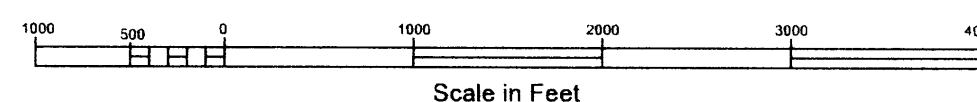


I, JEFFREY O. COVINGTON, Cadastral Surveyor, HEREBY CERTIFY upon honor, that in pursuance of special instructions bearing the approval date of the 23rd day of October, 2015, and the assignment instructions bearing the date of the 23rd day of October, 2015, I have dependently resurveyed portions of the subdivisional lines, Township 30 South, Range 2 West, Willamette Meridian, Oregon, which is represented upon this plat as having been executed by me and under my direction; and that said survey has been made in strict conformity with said special instructions, the Manual of Surveying Instructions, and in the specific manner described on this plat.

Jeffrey O. Covington
Cadastral Surveyor

4-10-2017
Date

LEGEND
◇ Original corner previously remonumented



OFFICIALLY FILED: 7/20/2017

TOWNSHIP 30 SOUTH, RANGE 2 WEST, OF THE WILLAMETTE MERIDIAN, OREGON

DEPENDENT RESURVEY

FILED

Date: 9/18/2017 By: JC

This survey consists of:

Map: PLAT: T30-2 2017-1

Narrative: VOL. 58 PAGE

Corner Pt: 23488-23489

NO SEPARATE LINE NOTES
ALL INFORMATION IS ON THE PLAT

DOUGLAS COUNTY
SURVEYOR

SHEET 2 OF 2

(A) The 1/4 sec. cor. of secs. 29 and 30, monumented with an iron post, 1 1/4 ins. diam., firmly set, projecting 10 ins. above ground (alongside of which is the original basalt stone, 14 x 10 ins., firmly set, projecting 4 ins. above ground, no marks visible), with brass cap mkd.

COUNTY SURVEYORS OFFICE
T 30 S R 2 W
1/4
S 30 | S 29
1968

from which the remains of a bearing tree mkd. by the Douglas County Surveyor's Office in 1968, reported by Rogers and Bishop in 1983

A sawed pine stump, 25 ins. diam., bears S. 86° E., 207.2 ft. dist., with scribe marks 1/4 S29 BT visible on an open blaze.

and a bearing tree mkd. by Rogers and Bishop

A pine, 32 ins. diam., bears N. 34 1/2° E., 114.2 ft. dist., with a healed blaze.

and a new bearing tree

A pine, 10 ins. diam., bears N. 68° W., 42.4 ft. dist., mkd. 1/4 S30 BT.

(B) The cor. of secs. 29 and 30 only, on the S. bdy. of section 19, perpetuated by the Douglas County Surveyor's Office in 1970, monumented with an iron post, 1 1/4 ins. diam., firmly set, projecting 12 ins. above ground (alongside of which is the original granite stone, 14 x 10 ins., firmly set, projecting 3 ins. above ground, no marks visible), with brass cap mkd.

COUNTY SURVEYORS OFFICE
T 30 S R 2 W
S 19
S 30 | S 29
1970

from which the bearing trees mkd. by the Douglas County Surveyor's Office

A hemlock, 20 ins. diam., bears S. 2° E., 10.2 ft. dist., with a healed blaze.

A yew, 10 ins. diam., bears S. 33 1/4° W., 20.0 ft. dist., with illegible scribe marks visible on a partially healed blaze.

(C) The 1/4 sec. cor. of sec. 29 only, monumented with an iron post, 1 1/4 ins. diam., firmly set, projecting 14 ins. above ground, with brass cap mkd.

COUNTY SURVEYORS OFFICE
T 30 S R 2 W
1/4 S 29
1970

from which the remains of an original bearing tree, reported by Rogers and Bishop in 1983

A sawed, decayed madrone stump, 16 ins. diam., bears S. 40° W., 5.9 ft. dist., with no scribe marks visible on an open blaze.

and the bearing trees mkd. by the Douglas County Surveyor's Office in 1970, reported by Rogers and Bishop

A madrone, 10 ins. diam., bears S. 11° W., 33.7 ft. dist., with a healed blaze.

A fir, 24 ins. diam., bears S. 66° W., 27.1 ft. dist., with a healed blaze.

From this cor., the 1/4 sec. cor. of sec. 20 only, bears S. 87° 26' 58" E., 15.16 ft. dist., monumented with an iron post, 1 1/4 ins. diam., firmly set, projecting 14 ins. above ground, with brass cap mkd.

COUNTY SURVEYORS OFFICE
T 30 S R 2 W
1/4 S20
1970

from which the remains of the bearing trees mkd. by Mensch, reported by Rogers and Bishop in 1983

A sawed, decayed madrone stump, 24 ins. diam., bears N. 6° E., 26.4 ft. dist., with no marks visible.

A decayed cedar stump, 18 ins. diam., bears N. 17° W., 7.3 ft. dist., with axe marks visible.

and the remains of the bearing trees mkd. by the Douglas County Surveyor's Office in 1970, reported by Rogers and Bishop

A broken, decayed fir snag, 35 ins. diam., bears N. 80° E., 40.2 ft. dist., with scribe marks 1/4 S20 CS BT visible on an open blaze.

A sawed fir stump, 36 ins. diam., bears N. 10 1/2° W., 10.6 ft. dist., with a healed blaze.

and new bearing trees

A fir, 11 ins. diam., bears N. 86 1/2° E., 38.1 ft. dist., mkd. 1/4 S20 BT.

A fir, 6 ins. diam., bears N. 49 1/4° W., 5.7 ft. dist., mkd. 1/4 S20 BT.

(D) The closing cor. of secs. 19 and 20 only, on the N. bdy. of section 29, perpetuated by the Douglas County Surveyor's Office in 1970, from original evidence no longer clearly identifiable and is accepted for the cor., monumented with an iron post, 1 1/4 ins. diam., firmly set, projecting 12 ins. above ground (alongside of which are fragments of a quartz stone, size indeterminate, no marks visible), with brass cap mkd.

COUNTY SURVEYORS OFFICE
T 30 S R 2 W
S 19 | S 20
CC
S 29
1970

from which the bearing trees mkd. by the Douglas County Surveyor's Office

A fir, 23 ins. diam., bears S. 15° E., 18.7 ft. dist., with a healed blaze.

A fir, 10 ins. diam., bears N. 65° W., 23.9 ft. dist., with a healed blaze.

(E) The 1/4 sec. cor. of secs. 19 and 20, perpetuated by the Douglas County Surveyor's Office in 1968, monumented with an iron post, 1 1/4 ins. diam., firmly set, projecting 14 ins. above ground, with brass cap mkd.

COUNTY SURVEYORS OFFICE
T 30 S R 2 W
1/4 S 19 | S 20
1968

from which the remains of the original bearing trees

A fir stump, 46 ins. diam., bears N. 33 1/2° E., 26.4 ft. dist., with a healed blaze.

A root hole bears S. 88° W., 8.6 ft. dist., with fallen fir trunk, 14 ins. diam., lying alongside, with a healed blaze.

and new bearing trees

A fir, 9 ins. diam., bears S. 16 3/4° E., 18.7 ft. dist., mkd. 1/4 S20 BT.

A pine, 12 ins. diam., bears S. 66 3/4° W., 8.7 ft. dist., mkd. 1/4 S19 BT.

(F) The cor. of secs. 17, 18, 19, and 20, perpetuated by the Douglas County Surveyor's Office in 1968, monumented with an iron post, 1 1/4 ins. diam., firmly set, projecting 16 ins. above ground (alongside of which is the original slate stone, 8 x 6 ins., firmly set, projecting 6 ins. above ground, no marks visible), with brass cap mkd:

COUNTY SURVEYORS OFFICE
T 30 S R 2 W
S 18 | S 17
S 19 | S 20
1968

from which the remains of the original bearing trees

A fir, 24 ins. diam., bears S. 22 1/2° E., 7.9 ft. dist., with a healed blaze.

A madrone, 26 ins. diam., bears S. 34° W., 23.1 ft. dist., with a healed blaze.

A fir stump, size indeterminate, bears N. 41 1/2° W., 33.0 ft. dist., with a rotted out blaze.

and the remaining bearing tree mkd. by the Douglas County Surveyor's Office

A fir, 24 ins. diam., bears N. 47 1/4° E., 14.4 ft. dist., with a healed blaze.

and new bearing tree

A fir, 11 ins. diam., bears N. 43 1/2° W., 16.5 ft. dist., mkd. T30S R2W S18 BT.

UNITED STATES DEPARTMENT OF THE INTERIOR
BUREAU OF LAND MANAGEMENT

Portland, Oregon

The survey represented by this plat, having been correctly executed in accordance with the requirements of law and the regulations of this Bureau, is hereby accepted.

For the Director

Maury J. M. Hantel

Chief Cadastral Surveyor of Oregon

April 18, 2017

Date

OFFICIALLY FILED: 7/20/2017