

# TOWNSHIP 30 SOUTH, RANGE 2 WEST, OF THE WILLAMETTE MERIDIAN, OREGON

## DEPENDENT RESURVEY AND SUBDIVISION OF SECTION II

FILED

Date: 10/19/2011 By: JC

This survey consists of:

Map: VOL 57

Narrative: PAGES

Corner Rpt: 22643-22666

DOUGLAS COUNTY SURVEYOR

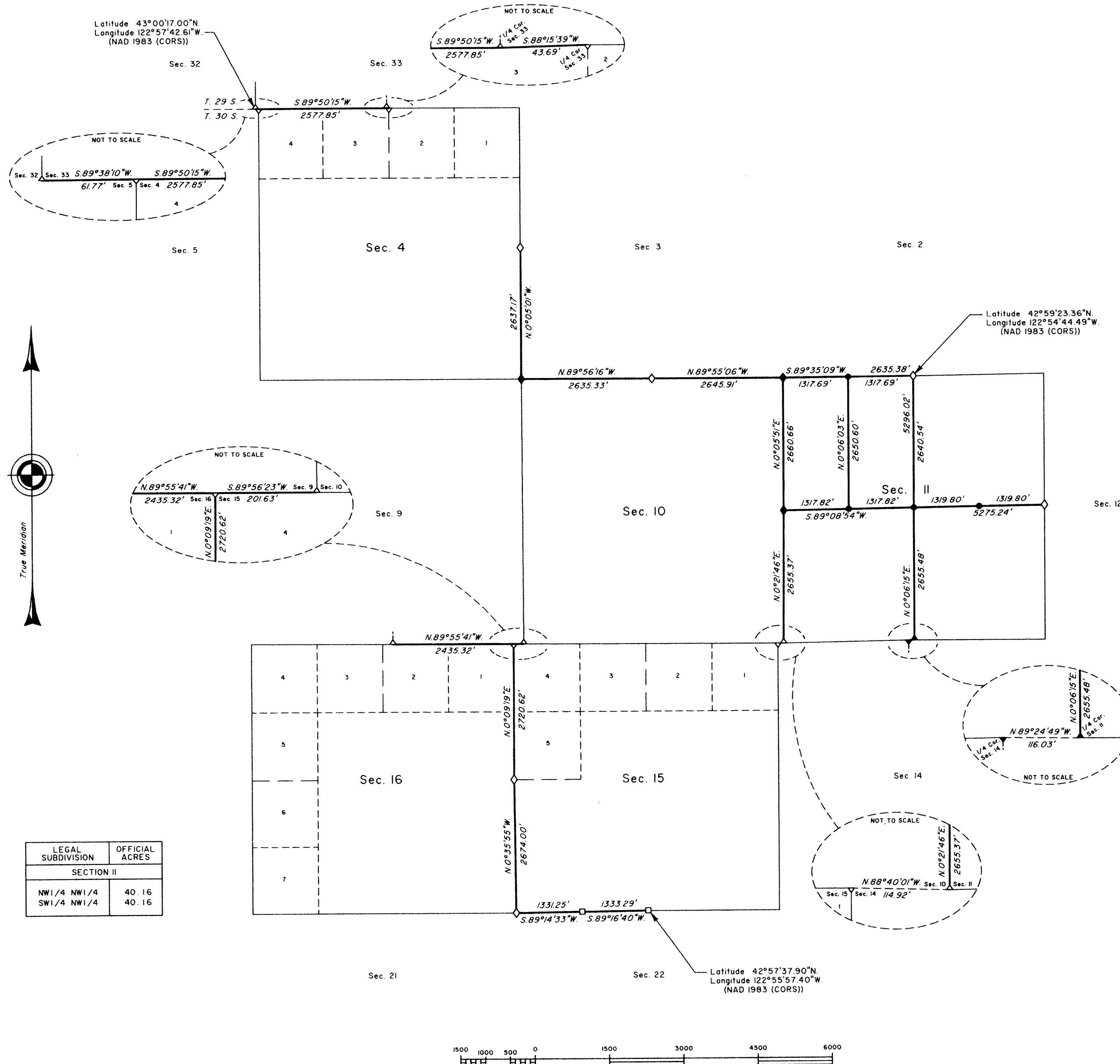
A history of surveys is contained in the field notes.

This plat represents the dependent resurvey of a portion of the north boundary and subdivisional lines, T. 30 S., R. 2 W., Willamette Meridian, Oregon, designed to restore the corners in their true original locations according to the best available evidence, and the subdivision of section II.

The survey was performed utilizing both conventional (directly measured angles and distances) and NAVSTAR Global Positioning System (GPS) satellite techniques. The GPS measurements utilized dual frequency, carrier phase GPS receivers. The baselines were computed in and adjusted using a least squares adjustment routine. Conventionally measured distances and directions have been adjusted using a least squares adjustment routine. The adjusted bearings and distances are reported to the nearest second and 0.01 foot.

Actual quantity acreages have been returned for Federal interest lands where indicated. Changes in the official acreages of land described by aliquot part or lot number do not alter its description. Further subdivision of aliquot parts shall be in accordance with the Manual. Further subdivision of official lots may only be by supplemental plat or official survey. Official acreage and lot designations of Federal interest lands not affected by this survey are as shown on the plats approved February 20, 1858 and October 14, 1910.

This survey was executed by Kenneth W. Saveland, Cadastral Surveyor, beginning October 21, 2008, and completed April 21, 2009, pursuant to Special Instructions dated September 25, 2008, under Group Number 2232, Oregon.



LEGAL SUBDIVISION	OFFICIAL ACRES
SECTION II	
NW1/4 NW1/4	40.16
SW1/4 NW1/4	40.16

LEGEND	
◇	Original corner previously remonumented
◆	Original corner remonumented this survey
□	Corner previously established or reestablished
●	Corner established or reestablished this survey

UNITED STATES DEPARTMENT OF THE INTERIOR  
BUREAU OF LAND MANAGEMENT

Portland, Oregon

This plat is strictly conformable to the approved field notes, and the survey, having been correctly executed in accordance with the requirements of law and the regulations of this Bureau, is hereby accepted.

For the Director

*John P. Samworth, Acting*

Chief Cadastral Surveyor of Oregon

8/18/2011

Date

OFFICIALLY FILED: 10/17/2011