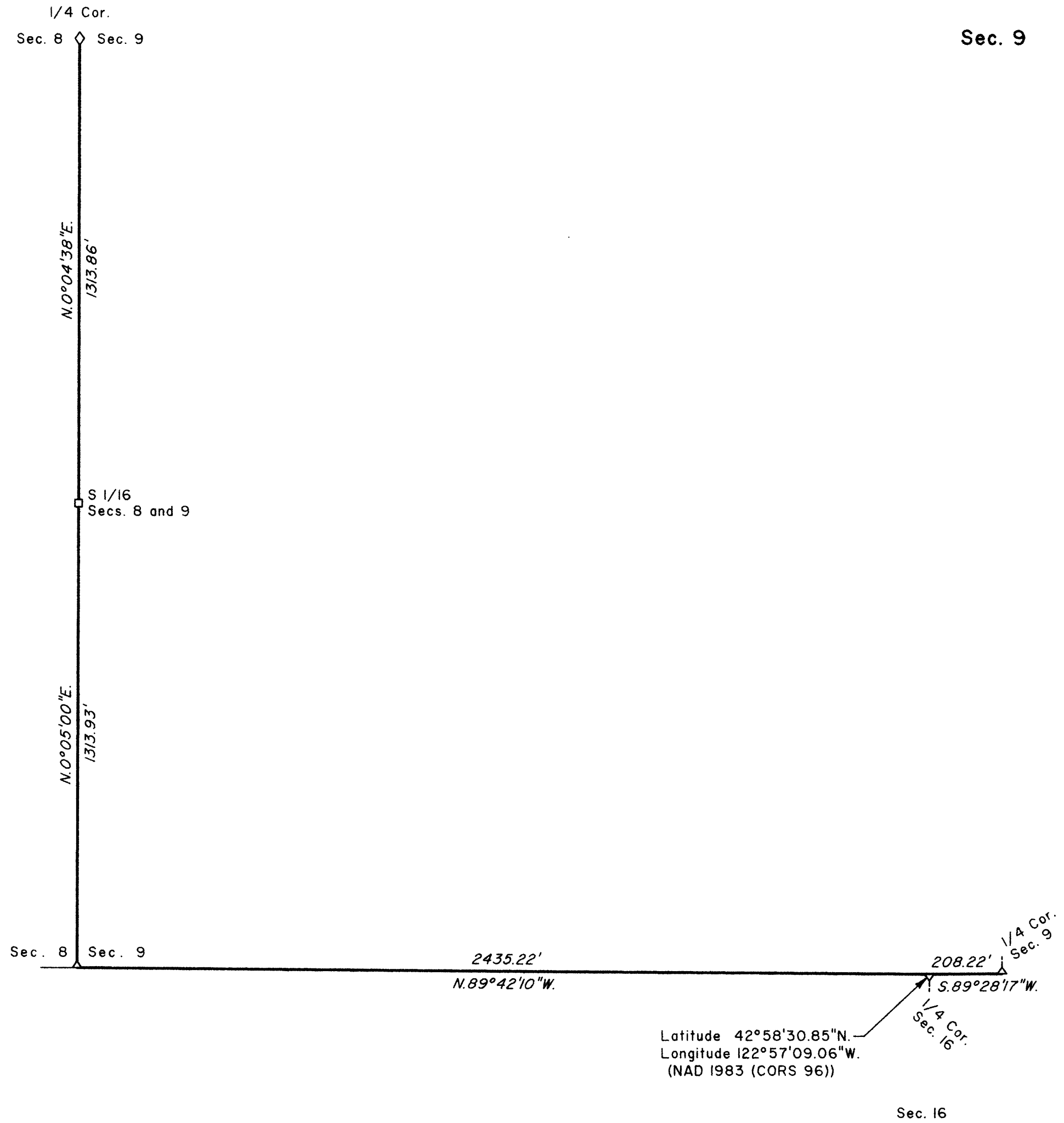
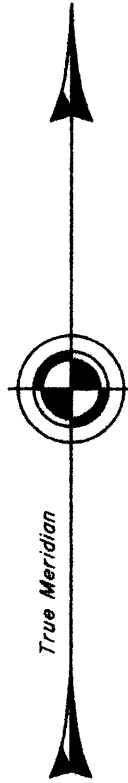


TOWNSHIP 30 SOUTH, RANGE 2 WEST, OF THE WILLAMETTE MERIDIAN, OREGON

DEPENDENT RESURVEY

FILED
 Date: 2/1/2010 By: JC
 This survey consists of:
 Map: VOL 56
 Narrative: PAGES 21959-67
 Corner Rpt: _____
 DOUGLAS COUNTY
 SURVEYOR

OFFICIALLY FILED: 1/12/2010



Sec. 9

A history of surveys is contained in the field notes.

This plat represents a dependent resurvey of a portion of the subdivisional lines, T. 30 S., R. 2 W., Willamette Meridian, Oregon, designed to restore the corners in their true original locations according to the best available evidence.

The survey was performed utilizing both conventional (directly measured angles and distances) and NAVSTAR Global Positioning System (GPS) satellite techniques. The GPS measurements utilized dual frequency, carrier phase GPS receivers. The baselines were computed in and adjusted using a least squares adjustment routine. Conventionally measured distances and directions have been adjusted using a least squares adjustment routine. The adjusted bearings and distances are reported to the nearest second and 0.01 foot. Only those lines bounding or crossing public lands were blazed.

This survey was executed by Kenneth W. Saveland, Cadastral Surveyor, beginning June 2, 2008, and completed June 10, 2008, pursuant to Special Instructions dated February 14, 2008, under Group Number 2190, Oregon.

LEGEND

- ◊ Original corner previously remonumented
- Corner previously established or reestablished

UNITED STATES DEPARTMENT OF THE INTERIOR
 BUREAU OF LAND MANAGEMENT

Portland, Oregon

This plat is strictly conformable to the approved field notes, and the survey, having been correctly executed in accordance with the requirements of law and the regulations of this Bureau, is hereby accepted.

For the Director

Mary J. M. Hartsel

Chief Cadastral Surveyor of Oregon

October 15, 2009

Date



Scale in Feet