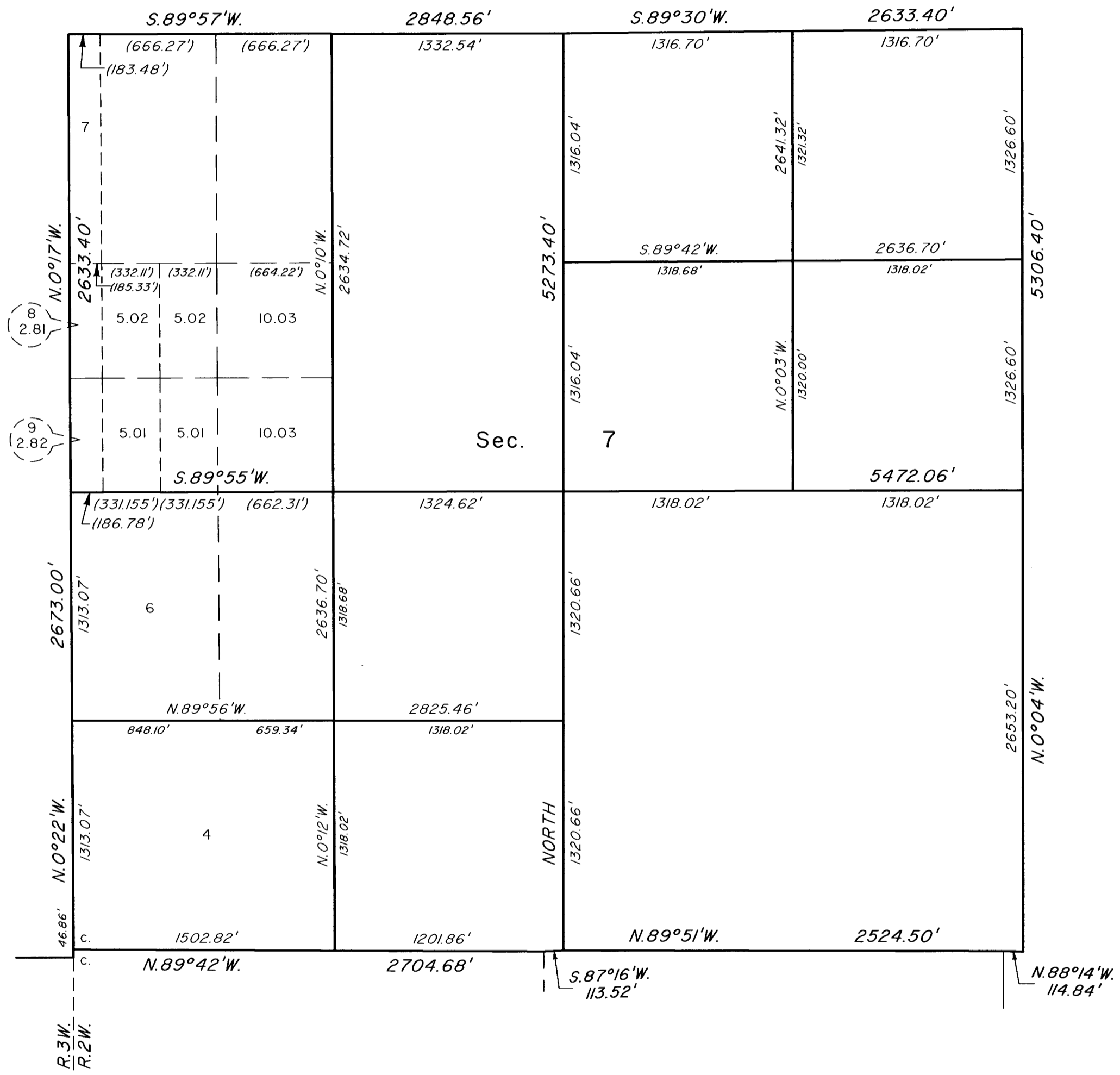


TOWNSHIP 30 SOUTH, RANGE 2 WEST, OF THE WILLAMETTE MERIDIAN, OREGON

SUPPLEMENTAL PLAT OF SECTION 7



This plat, showing amended lotting in section 7, T. 30 S., R. 2 W., Willamette Meridian, Oregon, is based upon the plats approved October 14, 1910, and accepted April 20, 1972, May 13, 1988, December 21, 1990, and February 12, 1993.

UNITED STATES DEPARTMENT OF THE INTERIOR
BUREAU OF LAND MANAGEMENT

Portland, Oregon

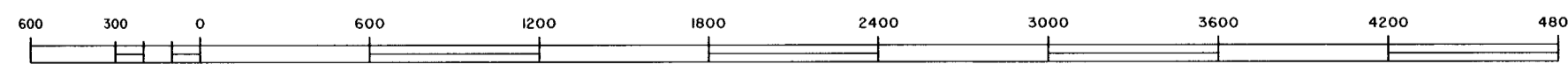
April 1, 2003

This plat, showing amended lottings, is based upon the official records and, having been correctly prepared in accordance with the regulations of this Bureau, is hereby accepted.

For the Director

Mary J. M. Hantel

Chief Cadastral Surveyor of Oregon



Scale in Feet