

TOWNSHIP 30 SOUTH, RANGE 2 WEST, OF THE WILLAMETTE MERIDIAN, OREGON

DEPENDENT RESURVEY AND SUBDIVISION OF SECTIONS 1 AND 12

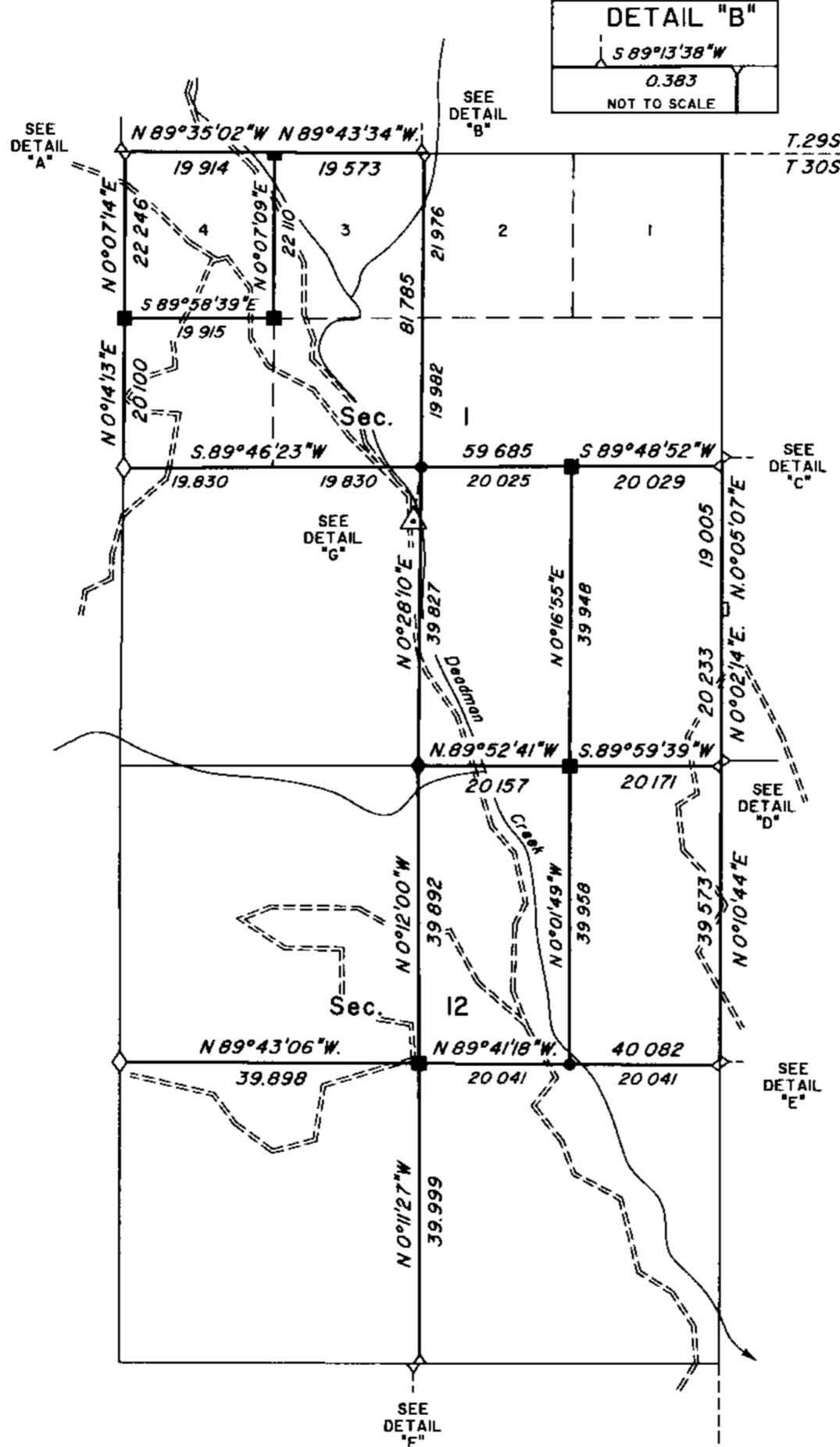
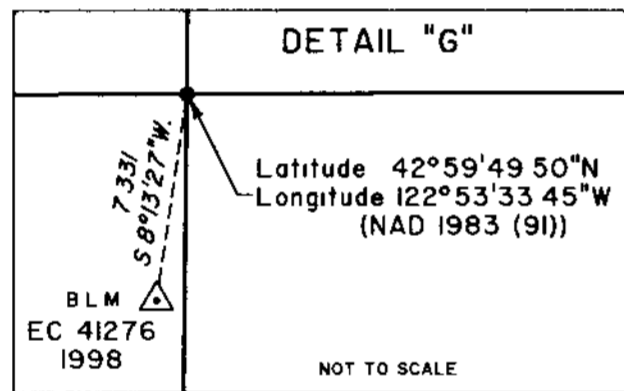
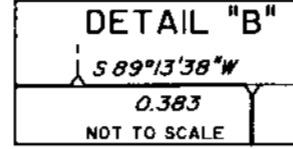
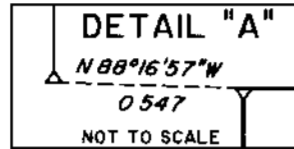
FILED

Date: 6-19-2000 By: JC
 This survey consists of:
 Map: _____
 Narrative: Vol 53
 Corner Rpt: Pgs 20327-20350

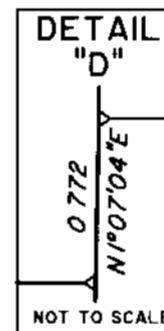
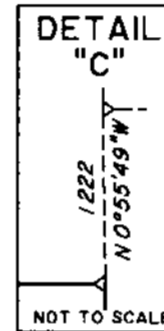
DOUGLAS COUNTY
 SURVEYOR

Sec. 35

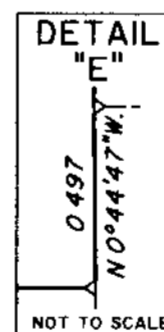
Sec. 36



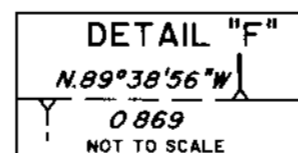
Sec. 6



Sec. 7



Sec. 13



Mean magnetic declination 18° East

A history of surveys is contained in the field notes

This plat represents a dependent resurvey of a portion of the north and east boundaries and subdivisional lines, T 30 S., R. 2 W., Willamette Meridian, Oregon, designed to restore the corners in their true original locations according to the best available evidence, and the subdivision of sections 1 and 12.

Measured distances and directions have been adjusted by Cadastral Measurement Management (CMM), computer software that incorporates a least squares adjustment routine. The adjusted bearings and distances are reported to the nearest second and 0.001 chain.

The lottings and areas are as shown on the plat approved October 14, 1910.

The survey was executed by Wayne L. Rogers, Cadastral Surveyor, and Robert H. Browning, Surveying Technician, beginning June 9, 1998, and completed July 30, 1998, pursuant to Special Instructions dated May 14, 1998, under Group Number 1883, Oregon.

Timber in this area consists of fir, cedar, hemlock, alder, maple, oak, chinquapin, pine, ash, yew, and madrone.

The tie to the geodetic control station is reported as mean bearing and sea level distance.

LEGEND	
◇	Original corner previously remonumented
◆	Original corner remonumented this survey
■	Corner previously established or reestablished, remonumented this survey
●	Corner established or reestablished this survey

UNITED STATES DEPARTMENT OF THE INTERIOR
 BUREAU OF LAND MANAGEMENT

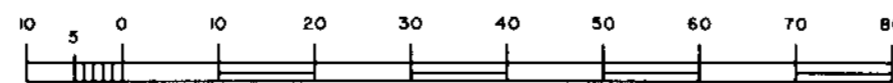
Portland, Oregon

April 3, 2000

This plat is strictly conformable to the approved field notes, and the survey, having been correctly executed in accordance with the requirements of law and the regulations of this Bureau, is hereby accepted.

For the Director

Wayne L. Rogers
 Chief Cadastral Surveyor of Oregon



Scale in Chains