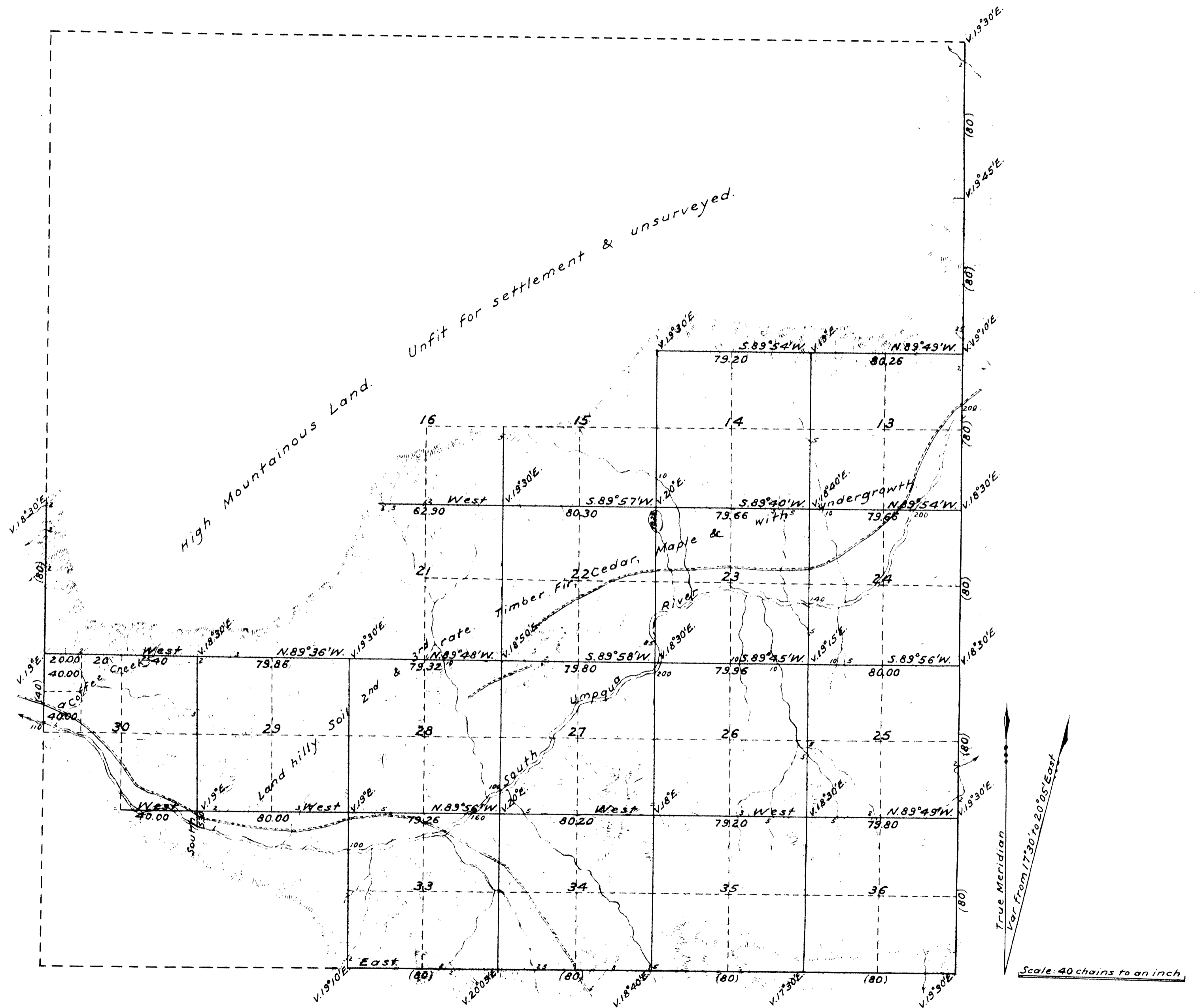


Township No. 30 South, Range No. 2 West, Willamette Meridian, Oregon.



Surveys designated	By whom surveyed	Contract		Amt. of Surveys			When surveyed
		No.	Date	Miles	chains	links	
Township Lines	Dennis Hathorn	73	June 8, 1857	05	40	00	February 20 th , 1858
Subdivisions	Dennis Hathorn	73	June 8 th , 1857	31	64	68	February 20 th , 1858
Total number of Acres 10240.00							

The above Map of Fractional Township No. 30 South, of Range No. 2 West, of the Willamette Meridian, Territory of Oregon, is strictly conformable to the field notes of the survey thereof on file in this office which have been examined and approved.
 Surveyor General's Office,
 Salem, February 20th, 1858.

(signed) John S. Zieber.
 Sur. Gen. of Oregon.

Public Survey Office,
 Portland, Oregon, Sept. 9, 1935.
 I certify this to be a correct copy of the original plat on file in this office.

Joseph A. Gaumig
 Office Cadastral Engineer.