

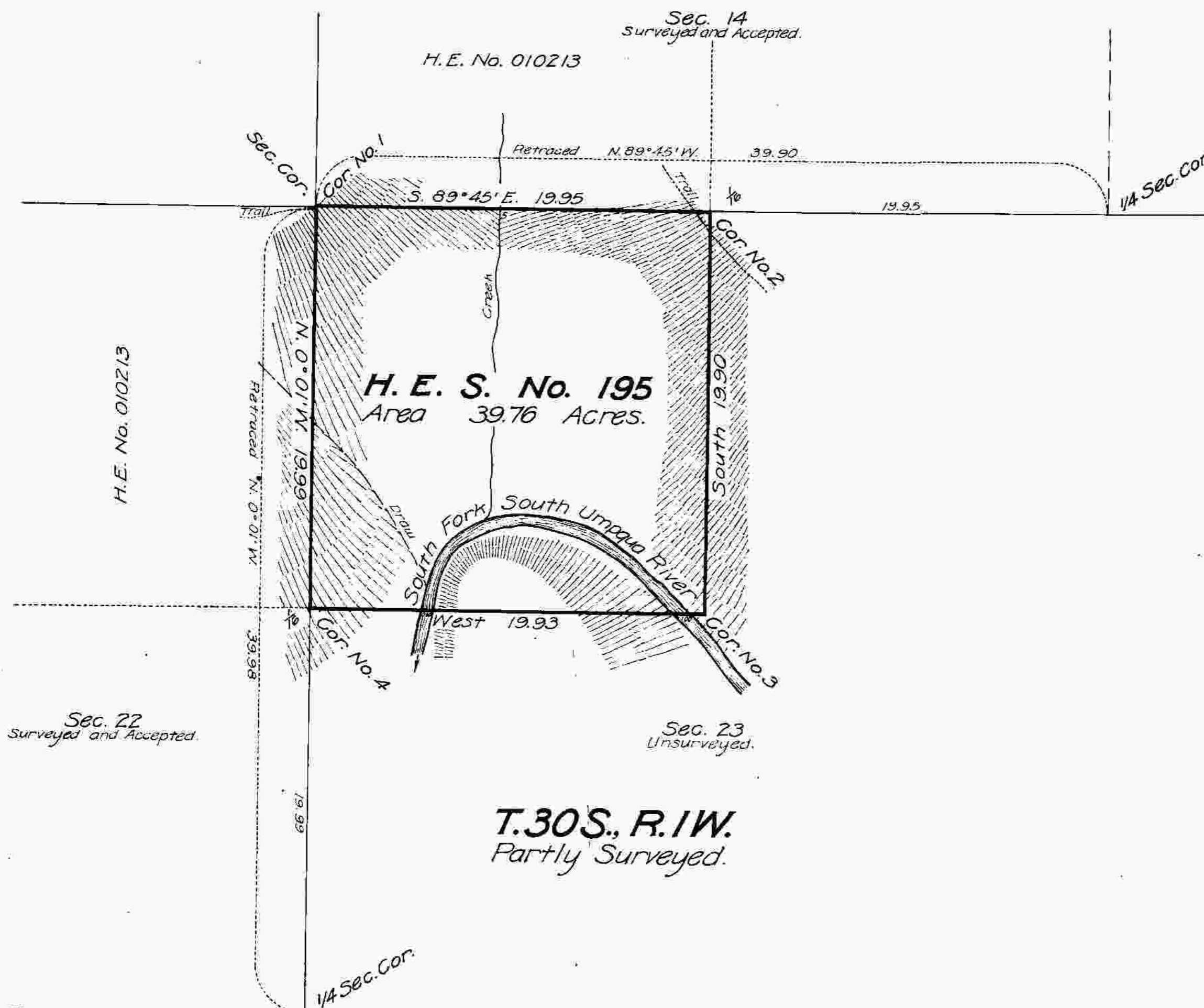
Survey accepted Nov. 23, 1917.
G.L.O.

Plat of
**HOMESTEAD
ENTRY SURVEY**
No. 195
in the
**UMPQUA
NATIONAL FOREST**
in
Section 23, unsurveyed, T.30S., R.1W.
of the
**WILLAMETTE MERIDIAN
OREGON**

This plat of Homestead Entry Survey
No. 195 State of Oregon is
strictly conformable to the field notes
thereof on file in this office which
have been examined and approved.

U.S. Surveyor General's Office
Portland, Oregon.
June 29, 1917

Edward W. Wash
U.S. Surveyor General



Patent Issued December 4, 1920
Patent No. 784825
Serial H. E. No. 010213
Land Office Roseburg

SCALE 5 chains to 1 inch

Surveys Designated	By whom Surveyed	Inst. Cont. Group No.	When Surveyed		Date of Approval
			Date	Completed	
H.E. Survey No. 195	Frederick W. Rose Surveyor Forest Service	195	March 23, 1916	Aug. 30, 1916	Aug. 31, 1916
					June 29, 1917

H. E. Survey No.	195	Areas in Acres
In Section		Conflicts
In Section		
In Section		
In Section		
Total	39.76	

Act of June 11, 1906 Act of Aug. 11, 1906
List No. 0-1556 Dated Dec. 11, 1904
Latitude 42° 57' N.
Longitude 122° 40' W.
Mean Mag. Decl. 20° 06' E.
Observations at Corner No. 1

In ink on 4-590 B