

*Supplemental Plat
of
Section 8 - Township No 30 South, Range No 1 West of the Willamette Meridian, Oregon.
(Superseding plat of said section approved June 29, 1906)
Scale 20 chains to an inch*

6

5

4

7

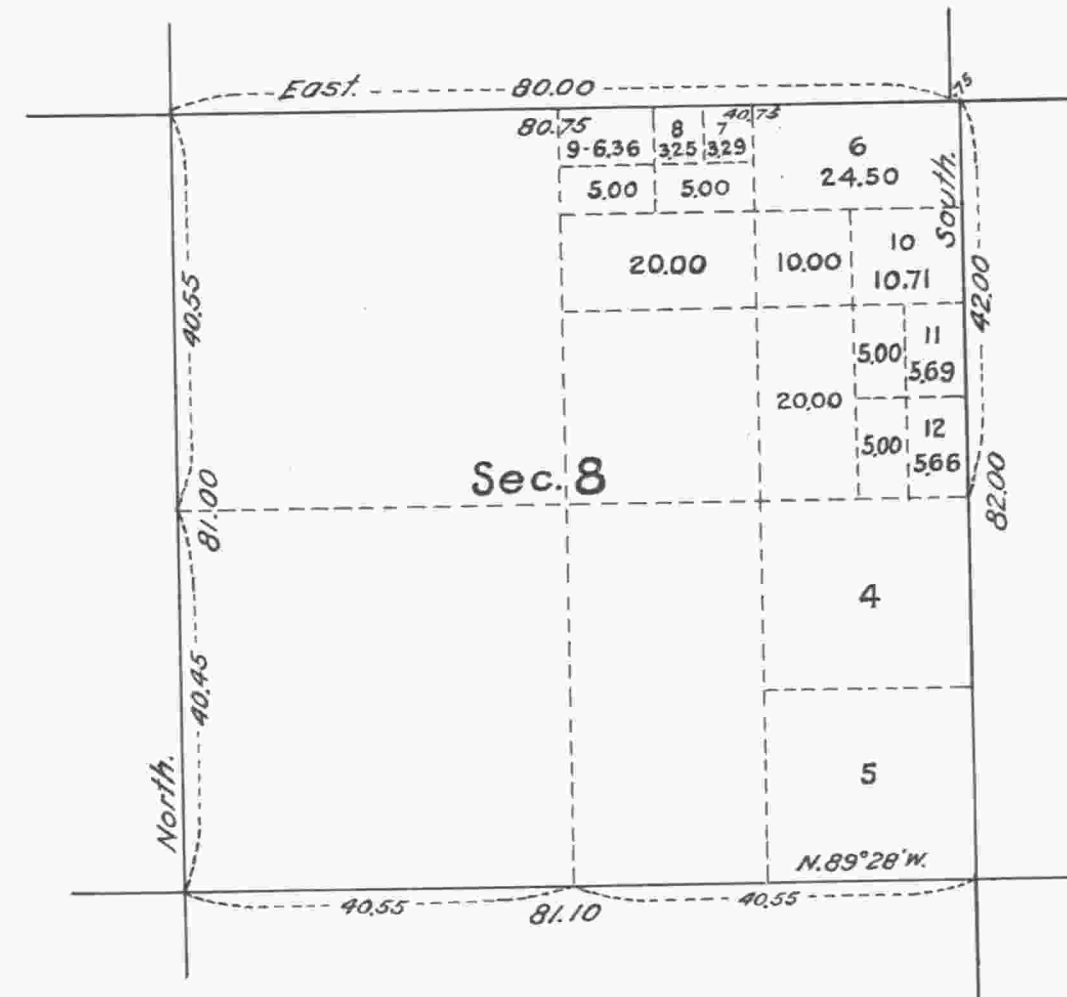
Sec. 8

9

18

17

16



This Supplemental plat showing the area and legal designation of old lots 1, 2 and 3 section 8 T. 30 S. R. 1 W. of the Willamette Meridian, Oregon, is made for the purpose of accommodating homestead entry Roseburg 07846, of Alva W. Dampier, embracing parts of lots 1, 2 and 3, prepared in compliance with instructions from the Hon. Asst. Commissioner of the General Land Office, contained in letter "E" dated April 15, 1919.

*U.S. Surveyor General's Office,
Portland, Oregon, April 25, 1919*

E. W. Worth
Surveyor General of Oregon.

ACCEPTED BY THE HON. COMMISSIONER G. L. O. May 12, 1919