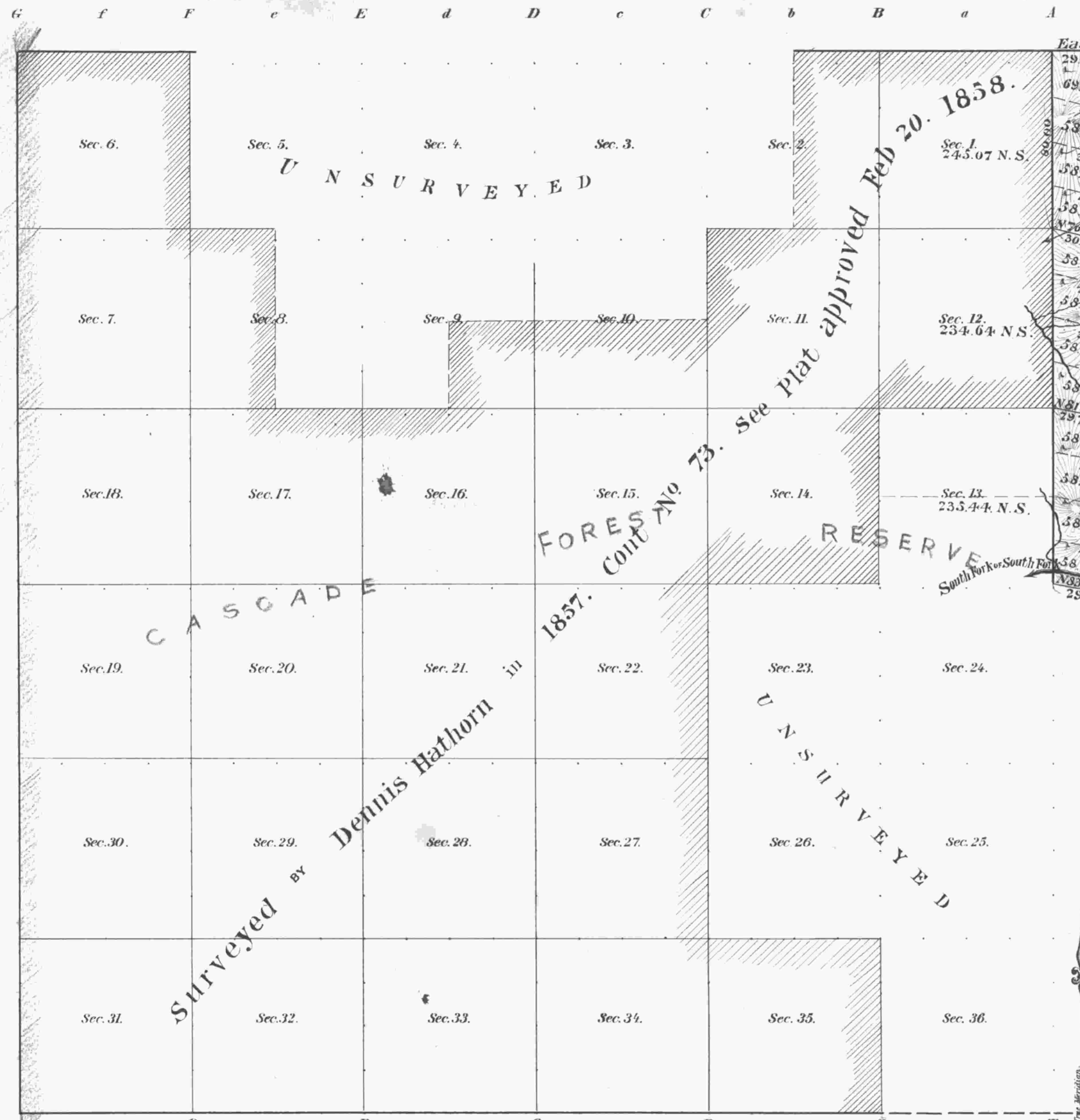


Supplemental Plat of additions to Secs 1, 12, and 13. Township N<sup>o</sup> 30 South Range N<sup>o</sup> 1 West of the Willamette Meridian Oregon.



Meanders of

Posts	Courses	Ch <sup>o</sup> Lk <sup>s</sup>	Posts	Courses	Ch <sup>o</sup> Lk <sup>s</sup>	Posts	Courses	Ch <sup>o</sup> Lk <sup>s</sup>
1			1			1		
2			2			2		
3			3			3		
4			4			4		
5			5			5		
6			6			6		
7			7			7		
8			8			8		
9			9			9		
10			10			10		
11			11			11		
12			12			12		
13			13			13		
14			14			14		
15			15			15		
16			16			16		
17			17			17		
18			18			18		
19			19			19		
20			20			20		
21			21			21		
22			22			22		
23			23			23		
24			24			24		
25			25			25		
26			26			26		
27			27			27		
28			28			28		
29			29			29		
30			30			30		
31			31			31		
32			32			32		
33			33			33		
34			34			34		
35			35			35		
36			36			36		

Area of Former Survey 16158.45 Acres — of New Survey 715.15 AS Total number of Acres 16873.60.

Surveys Designated	By Whom Surveyed	Date of Contract	Amount of Surveys M <sup>o</sup> Ch <sup>o</sup> Lk <sup>s</sup>	When Surveyed
Township lines				
Subdivisions				

The above Supplemental plat of additions to Secs 1, 12, and 13, T. 30 S., R. 1 W., Will Mer. Oregon, made by order of Hon<sup>o</sup> Commissioners' Letters 'E' dated Aug 5, and Sept 12, 1905, is strictly conformable to the field notes of the survey thereof on file in this Office, which have been examined and approved.

Sur<sup>r</sup> Gen<sup>l</sup>'s Office  
Portland, Oregon Oct 19, 1905

Jno D Dabbs  
Sur<sup>r</sup> Gen<sup>l</sup> for Oregon

The above Map of Township N<sup>o</sup> 30 of Range N<sup>o</sup> 1 West of the Willamette Meridian is strictly conformable to the field notes of the survey thereof on file in this Office, which have been examined and approved.

Surveyor General's Office.

Sur. Gen.