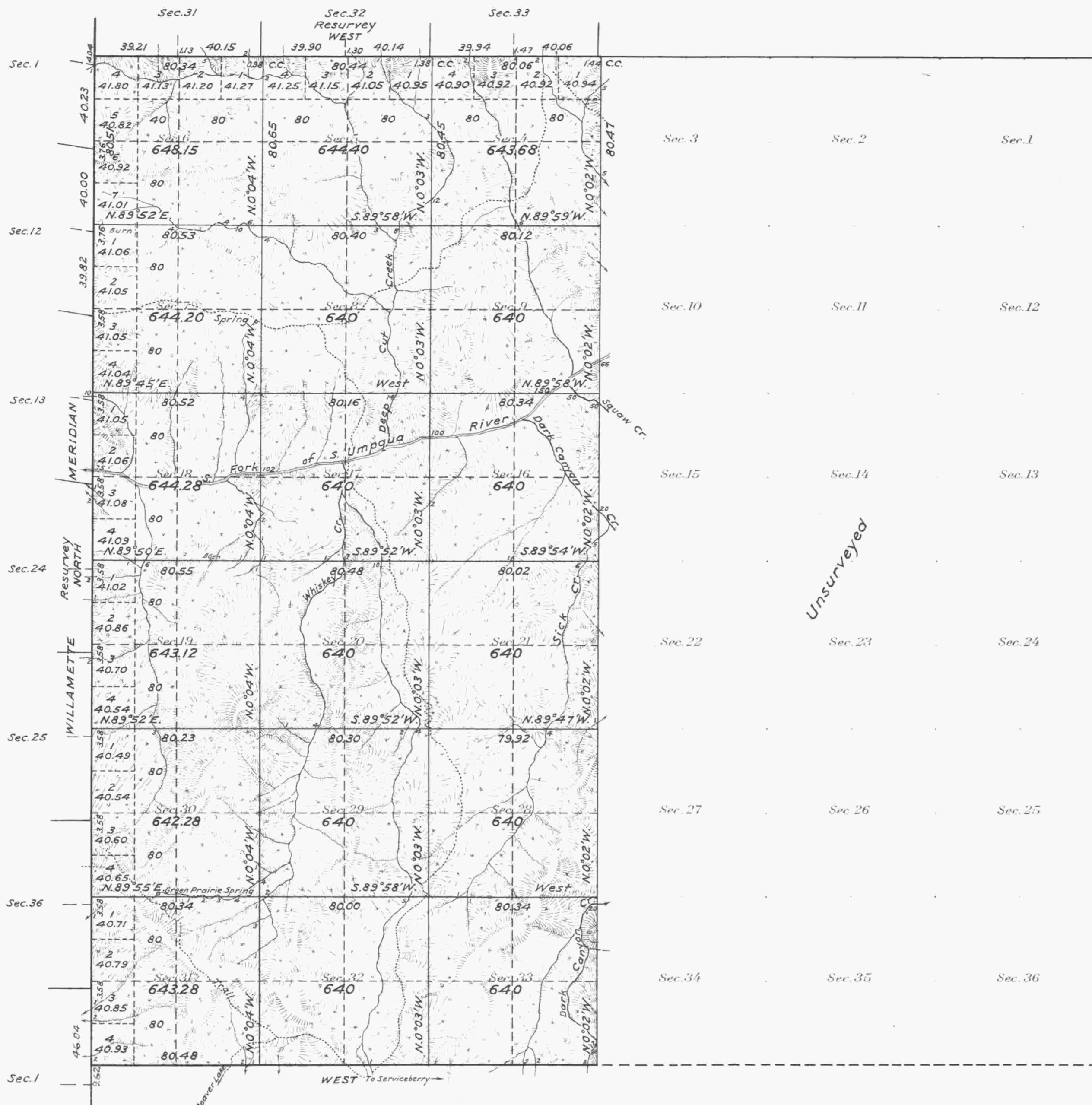


Accepted March 30, 1925.

Township N^o 30 South, Range N^o 1 East of the Willamette Meridian, Oregon.



Unsurveyed

Areas in Acres	
Public Land	11553.39
Indian Reservation	
Indian Allotments	
Mineral Claims	
Water Surface	
Total Area	11553.39

Scale 40 Chains to an inch
 Mean Magnetic Declination 21° E.
 Lat. 42° 55' N. } At camp in Sec. 33, T. 30 S., R. 1 E.
 Long. 122° 42' W.

Surveys Designated	By Whom Surveyed	Group No.	Date	Amount of Surveys			When Surveyed	
				Mls.	chs.	fks.	Begun	Completed
Willamette Meridian Res.	Fred Mensch U.S.C.E.	90	June 7, 1922.	5	44	09	Aug. 18, 1923	Sept. 6, 1923.
North Tp. Boundary "	" " " "	"	" " " "	3	0	84	Sept. 13, "	" 15, "
Subdivisions	" " " "	"	" " " "	33	5	82	Aug. 9, "	" " "
Connections	" " " "	"	" " " "	0	3	80	Sept. " "	" 14, "
North Tp. Boundary by	" " under	Contract N ^o	797 in 1910.					
Willamette Meridian	Homer D. Angell "	"	" " 1902.					
South Tp. Boundary	Fred Mensch	90	June 7, 1922				Aug. 7, 1923	Aug. 8, 1923

The above map of Township No. 30 South, Range No. 1 East of the Willamette Meridian, Oregon is strictly conformable to the field notes of the survey thereof on file in this office, which have been examined and approved.

U.S. Surveyor General's Office.
 Portland Oregon, February 28, 1925.

Wesley M. Cariness
 Surveyor General.