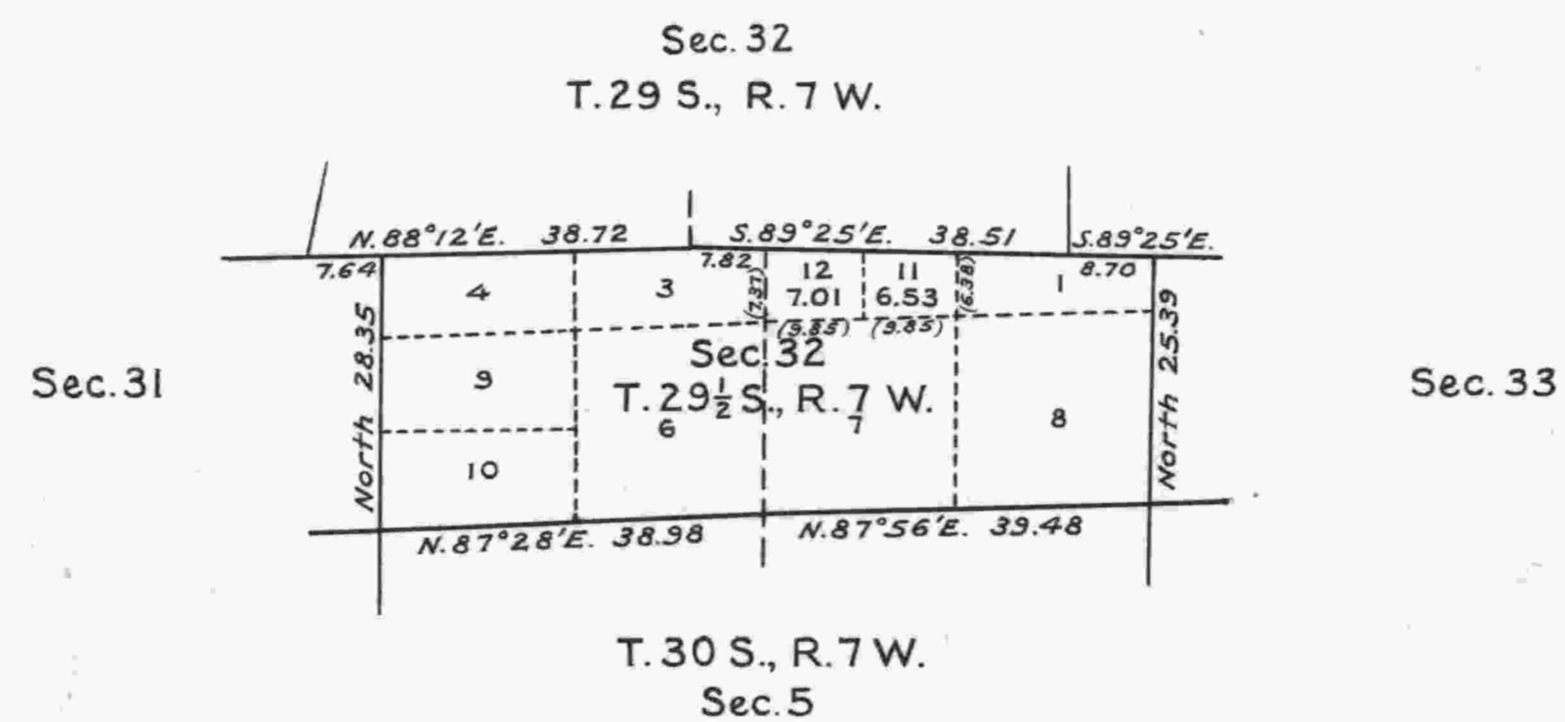


TOWNSHIP N<sup>o</sup> 29  $\frac{1}{2}$  SOUTH, RANGE N<sup>o</sup> 7 WEST  
OF THE WILLAMETTE MERIDIAN, OREGON.  
SUPPLEMENTAL PLAT OF SECTION 32.

Scale: 20 Chains to the Inch.



Public Survey Office,  
Portland, Oregon, October 24, 1928.  
The above supplemental plat of Sec. 32, Township No. 29  $\frac{1}{2}$  South,  
Range No. 7 West of the Willamette Meridian, Oregon, based upon the plat  
approved February 15, 1926, showing a subdivision of original lot 2, to  
accommodate the amendment of Roseburg entry P. C. 6307, prepared in  
accordance with instructions contained in the Commissioner's letter "E"  
dated October 16, 1928, is hereby approved.

*Joseph A. Gausman*  
Office Cadastral Engineer.

Department of the Interior,  
General Land Office,  
Washington, D. C., November 3, 1928.  
The amended lottings represented by this  
supplemental plat having been correctly made in  
accordance with the regulations of this office,  
the plat is hereby accepted.

*W. C. Staveland*  
Assistant Commissioner.