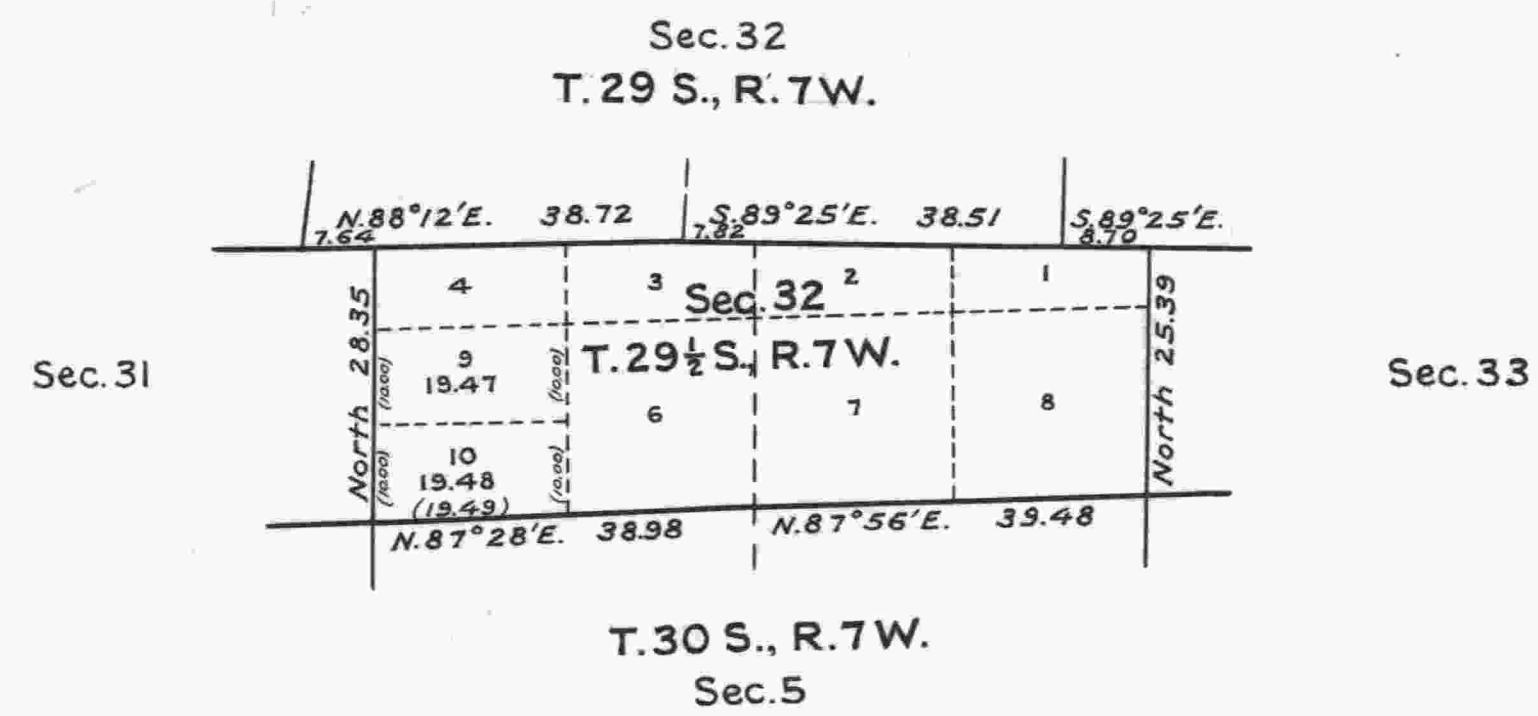


TOWNSHIP N° 29½ SOUTH, RANGE N° 7 WEST,
OF THE WILLAMETTE MERIDIAN, OREGON.
SUPPLEMENTAL PLAT OF SECTION 32.

Scale: 20 Chains to an Inch.



Public Survey Office,
Portland, Oregon, July 20, 1928.
The above supplemental plat of Sec. 32, Township No. 29½ South,
Range No. 7 West, of the Willamette Meridian, Oregon, based upon the plat
approved February 15, 1926, showing a subdivision of original lot 5, to
accommodate the patentee and present owner of Roseburg H. E. 03677,
patent 99965, Clarence A. Prock, prepared in accordance with instructions
contained in the Commissioner's letter "E" dated July 6, 1928, is
hereby approved.

Joseph A. Gausong
Office Cadastral Engineer.

Department of the Interior,
General Land Office,
Washington, D. C., August 7, 1928.
The amended lottings represented by
this supplemental plat having been
correctly made in accordance with the
regulations of this office, the plat
is hereby accepted.

D. T. C. [Signature]
Acting Assistant Commissioner.