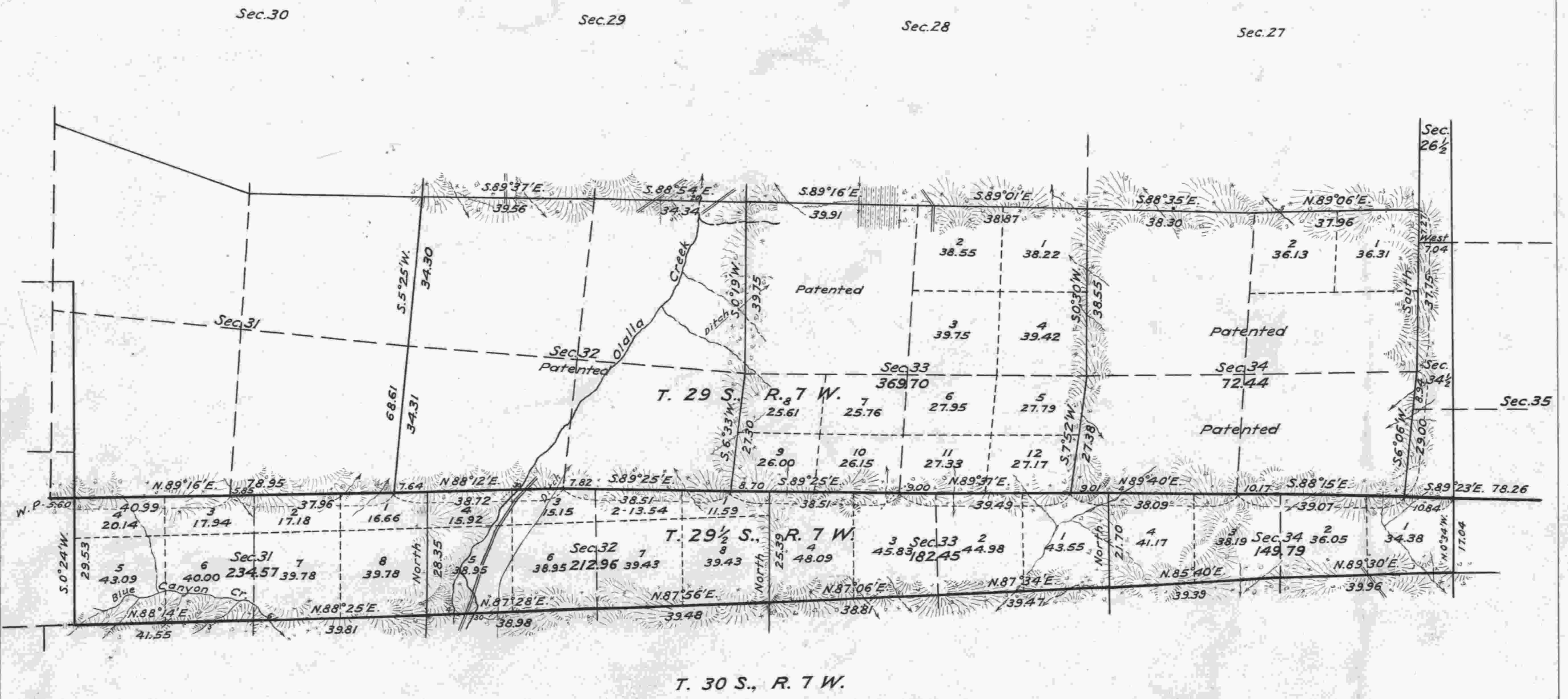


Township No. 29 1/2 South, Range No. 7 West of the Willamette Meridian, Oregon.



T. 29 1/2 S., R. 7 W.

T. 30 S., R. 7 W.

DEPARTMENT OF THE INTERIOR
 GENERAL LAND OFFICE,
 Washington, D.C., Dec. 13, 1926.
 The survey represented by this plat
 having been correctly executed in accordance
 with the requirements of law and the
 regulations of this office, is hereby
 accepted.

W. C. Havell
 Assistant Commissioner.

Scale 20 Chains to an inch
 Mean Magnetic Declination.

Surveys Designated	By Whom Surveyed	Group			Amount of Surveys			When Surveyed	
		No.	Date	Mls.	chs.	lks.	Begun	Completed	
Exteriors	Fred Mensch U.S.C.E.	109	Feb. 25, 1924	7	41	12			
Subdivisions	" " "	"	" " "	6	24	11	May 6, 1924	Sept. 19, 1924	
Miscellaneous	" " "	"	" " "		49	43			

The above map of Township No. 29 1/2 South, Range No. 7 West of the Willamette Meridian, Oregon, is strictly conformable to the field notes of the survey thereof which have been examined and approved.

Office of U.S. Supervisor of Surveys,
 Denver Colorado, Feb. 15, 1926

Wm. H. Brown
 U.S. Supervisor of Surveys.

atrop
1926