

TOWNSHIP 29 SOUTH, RANGE 9 WEST, OF THE WILLAMETTE MERIDIAN, OREGON

DEPENDENT RESURVEY AND SUBDIVISION OF SECTIONS

FILED
 Date: 2/4/2020 By: JC
 This survey consists of:
 Map: T29-9 2019-1
VOL. 59 PAGES
23685-23720

DOUGLAS COUNTY
 SURVEYOR

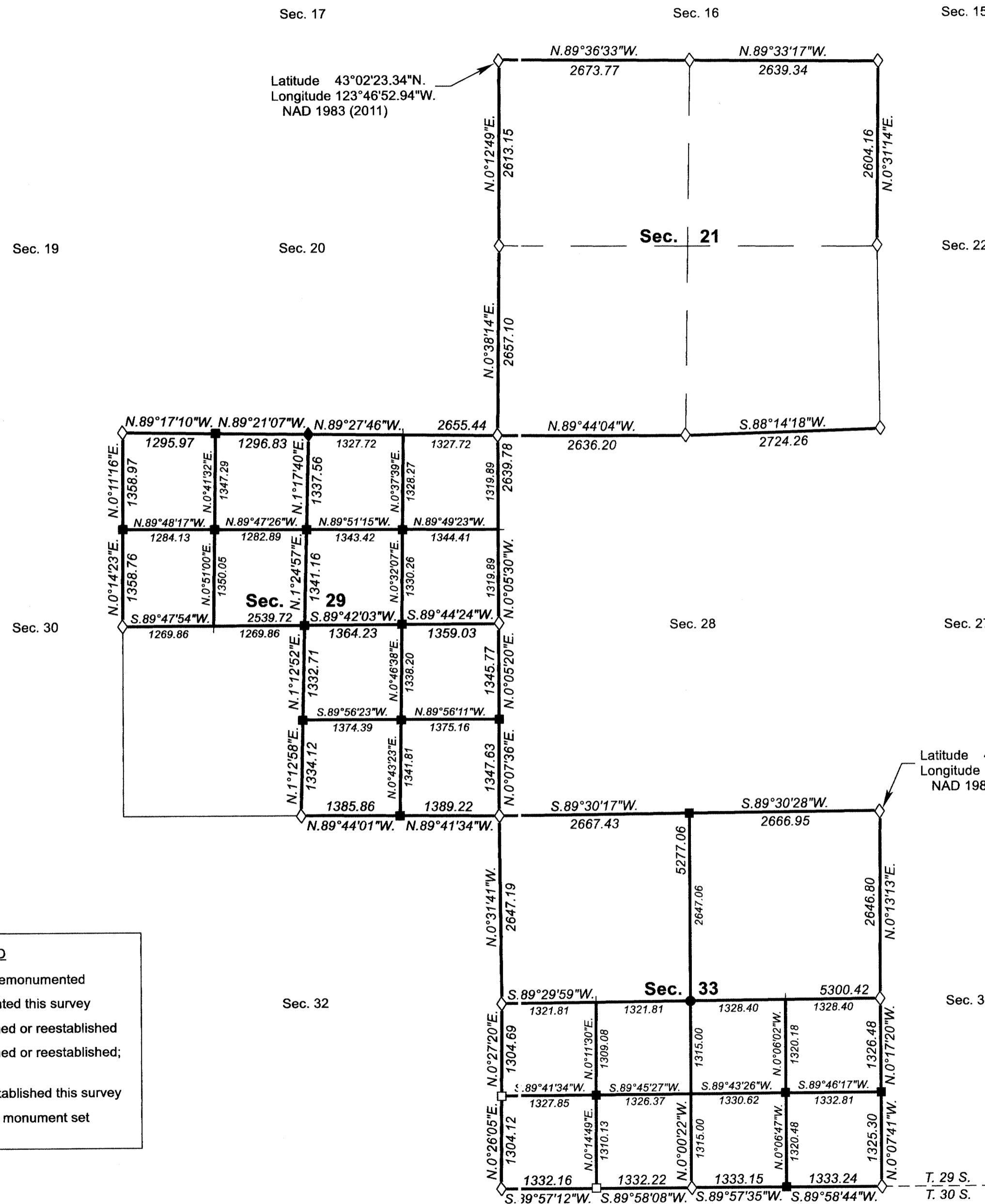
A history of surveys, corner descriptions, and other relevant information are contained in the field notes.

This plat represents the dependent resurvey of a portion of the south boundary and subdivisional lines, designed to restore the corners in their true original locations according to the best available evidence, and the subdivision of sections 29 and 33, Township 29 South, Range 9 West, Willamette Meridian, Oregon.

Official areas based on the measurements of this survey have been returned for Federal interest land where indicated. Aliquot part legal subdivisions retain their aliquot characteristics and refer to precisely the same land as that which was previously identified by its original survey or description. Except as indicated hereon, the lottings and areas are as shown on the plat approved March 19, 1909, subsequently approved following amendment October 5, 1909.

Survey executed by Joseph J. Johnson, Cadastral Surveyor, beginning February 24, 2017, and completed October 16, 2018, pursuant to special instructions approved February 24, 2017, for Group No. 2864, Oregon.

OFFICIALLY FILED: 7/8/2019



LEGEND	
◇	Original corner previously remonumented
◆	Original corner remonumented this survey
□	Corner previously established or reestablished
■	Corner previously established or reestablished; remonumented this survey
●	Corner established or reestablished this survey
+	Corner point calculated, no monument set

LEGAL SUBDIVISION	OFFICIAL ACRES
SECTION 29	
NE1/4 NE1/4	40.61
NW1/4 NE1/4	40.86
SE1/4 NE1/4	41.12
NE1/4 NW1/4	39.75
NE1/4 SE1/4	42.12
SECTION 33	
NE1/4 NE1/4	40.47
NW1/4 NE1/4	40.48
SW1/4 NE1/4	40.40
SE1/4 NE1/4	40.39
NE1/4 NW1/4	40.43
NW1/4 NW1/4	40.44
SW1/4 NW1/4	40.25
SE1/4 NW1/4	40.25
NE1/4 SW1/4	39.88
NW1/4 SW1/4	39.74
SE1/4 SW1/4	40.05
NE1/4 SE1/4	40.42
NW1/4 SE1/4	40.21
SW1/4 SE1/4	40.29
TOTAL AREA	768.16
FEDERAL INTEREST LAND RESURVEYED	

UNITED STATES DEPARTMENT OF THE INTERIOR
 BUREAU OF LAND MANAGEMENT

Portland, Oregon

This plat is strictly conformable to the approved field notes, and the survey, having been correctly executed in accordance with the requirements of law and the regulations of this Bureau, is hereby accepted.

For the Director
Mary J. M. Hart
 Chief Cadastral Surveyor of Oregon

April 26, 2019
 Date

