

TOWNSHIP 29 SOUTH, RANGE 9 WEST, OF THE WILLAMETTE MERIDIAN, OREGON

RETRACEMENT

(A) The 1/4 sec. cor. of secs. 27 and 34, perpetuated by the Douglas County Surveyor's Office in 1959, monumented with an iron post, 1 1/4 ins. diam., firmly set, projecting 12 ins. above ground, with brass cap mkd.

COUNTY SURVEYORS OFFICE
T29S R9W
S27
1/4 S34
1959

from which the remains of the original bearing trees

A roothole bears S. 20° W., 15.2 ft. dist., with a fallen, decayed trunk, size indeterminate, laying alongside, with a slab of wood mkd. BT laying on top of the trunk.

A cedar, 22 ins. diam., bears N. 58° W., 5.3 ft. dist., with axe marks visible.

and bearing tree mkd. by the Douglas County Surveyors Office

A cedar, 17 ins. diam., bears S. 65 1/4° W., 29.4 ft. dist., with a healed double blaze.

Corner is located 1 ft. south of a fence line, bears E. and W., and 1 ft. E. of the extension line of a fence line, bears N.

(B) The cor. of secs. 27, 28, 33, and 34, perpetuated by the Douglas County Surveyor's Office in 1957 and 1991, monumented with an iron post, 1 1/2 ins. diam., firmly set, projecting 11 ins. above ground, with a wooden post set alongside the southeast side, and brass cap mkd.

COUNTY SURVEYORS OFFICE
T29S R9W
S28 S27
S33 S34
Reset 1991
1957

from which the remains of the original bearing trees

A decayed fir stump, size indeterminate, bears S. 70° E., 115.5 ft. dist. with no marks visible.

A decayed fir stump, 60 ins. diam., bears N. 78° W., 27.1 ft. dist., with no marks visible.

and bearing tree mkd. by Porter in 1909

A maple, 24 ins. diam., bears S. 78° E., 11.9 ft. dist., with a healed blaze. (Record, N. 80° E., 13.9 ft. dist.)

and the remains of bearing trees mkd. by the Douglas County Surveyor's Office in 1957

A decayed hemlock stump, 24 ins. diam., bears S. 52 1/4° E., 40.0 ft. dist., with a hollowed blaze.

A maple, 25 ins. diam., bears S. 46 1/4° W., 26.2 ft. dist., with a healed blaze.

A fir, 48 ins. diam., bears N. 60° W., 52.7 ft. dist., with a healed blaze.

and a new bearing tree

A fir, 8 ins. diam., bears N. 45 1/2° E., 48.8 ft. dist., mkd. T29S R9W S27 BT

Corner is located alongside the south side of a skid road, bears E. and W.

(C) The cor. of secs. 15, 16, 21, and 22, perpetuated by the Douglas County Surveyor's Office in 1959, monumented with an iron post, 1 1/4 ins. diam., firmly set, projecting 8 ins. above ground, with brass cap mkd.

COUNTY SURVEYORS OFFICE
T29S R9W
S16 S15
S21 S22
1959

from which the remains of an original bearing tree

A decayed stump, 42 ins. diam., bears N. 43° W., 19.8 ft. dist., with no marks visible.

and the remains of bearing trees mkd. by the Douglas County Surveyors Office

A fir, 30 ins. diam., bears N. 68° E., 44.2 ft. dist., with a healed blaze.

A fir snag, 26 ins. diam., bears S. 15° E., 16.5 ft. dist., with a healed blaze.

A fir, 27 ins. diam., bears S. 63° W., 9.9 ft. dist., with a healed blaze.

A decayed fir stump, 22 ins. diam., bears N. 39° W., 40.9 ft. dist., with no marks visible. (Record, N. 37° W.)

and new reference monuments

A steel reinforcing rod, 30 ins. long, 5/8 in. diam., driven 27 ins. in the ground, bears S. 2° 57' 15" E., 27.0 ft. dist., with an aluminum cap mkd. RM T29S R9W S22 27.0 FT TO COR 2013 and an arrow pointing to the cor.

A steel reinforcing rod, 30 ins. long, 5/8 in. diam., driven 25 ins. in the ground, bears N. 53° 00' 56" W., 25.0 ft. dist., with an aluminum cap mkd. RM T29S R9W S16 25.0 FT TO COR 2013 and an arrow pointing to the cor.

(D) The 1/4 sec. cor. of secs. 15 and 16, monumented with an iron post, 2 1/2 ins. diam., firmly set, projecting 2 ins. above ground, with brass cap mkd.

1/4
S16 S15
T29S R9W
1968

from which the remains of bearing trees mkd. by Peterson

A fir, 19 ins. diam., bears S. 57° E., 7.3 ft. dist., with a healed blaze.

A fir snag, 8 ins. diam., bears N. 49° W., 10.2 ft. dist., with a healed blaze.

and a bearing tree mkd. by Skeesick in 2004-2005

A hemlock, 8 ins. diam., bears N. 14° W., 30.8 ft. dist., with a healed double blaze.

FILED

Date: 8/29/2014 By: JC

This survey consists of:

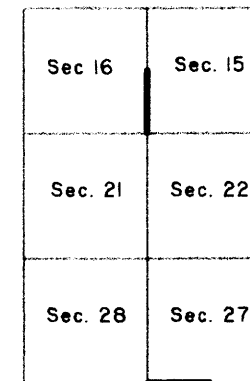
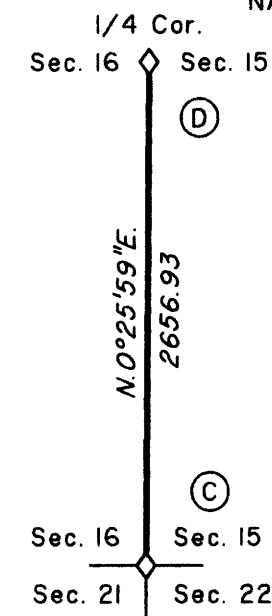
Map: T29-9W 2014-1

Narrative: VOL. 58 PGS 23055

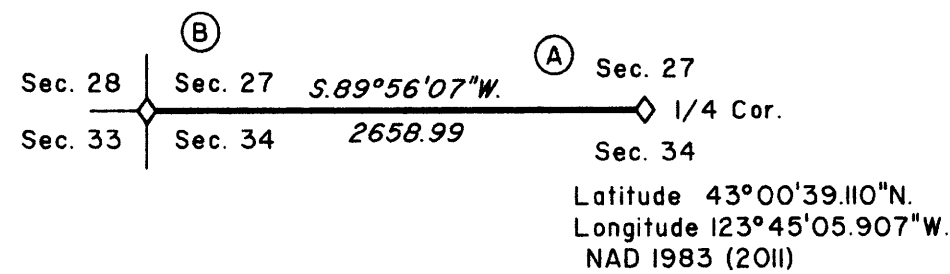
Corner Rpt. THIS PLAT REPRESENTS THE ENTIRE RECORD OF THE DEPENDENT RESURVEY

DOUGLAS COUNTY SURVEYOR

Latitude 43°02'49.200"N.
Longitude 123°45'41.139"W.
NAD 1983 (2011)



LOCATION DIAGRAM
(NOT TO SCALE)



LEGEND
◊ Original corner previously remonumented

I, George M. Winter, Cadastral Surveyor, HEREBY CERTIFY upon honor, that in pursuance of special instructions bearing the approval date of the 28th day of April, 2010, and the assignment instructions bearing the date of the 19th day of March, 2013, I have retraced a portion of the subdivisional lines, Township 29 South, Range 9 West, Willamette Meridian, Oregon, which is represented upon this plat as having been executed by me and under my direction; and that said survey has been made in strict conformity with said special instructions, the Manual of Surveying Instructions, and in the specific manner described on this plat.

George Winter
Cadastral Surveyor
6/23/14
Date



Scale in Feet

This plat constitutes the entire record of the retracement of a portion of the subdivisional lines, Township 29 South, Range 9 West, Willamette Meridian, Oregon.

A history of official surveys pertaining to this retracement is as follows:

In 1855, Dennis Hathorn, U.S. Deputy Surveyor, surveyed a portion of the subdivisional lines as shown on the official plat of survey approved July 7, 1856.

In 1909, William M. Porter, Cadastral Surveyor, surveyed a portion of the subdivisional lines as shown on the official plat of survey approved March 19, 1909.

In 1968, Peter A. Peterson, Cadastral Surveyor, resurveyed a portion of the subdivisional lines as shown on the official plat of survey accepted March 12, 1971.

In 2003, A. Bert Skeesick, Cadastral Surveyor, resurveyed a portion of the subdivisional lines and subdivided sections 23 and 27 as shown on the official plat of survey accepted January 19, 2007.

In 2004-05, A. Bert Skeesick, Cadastral Surveyor, resurveyed a portion of the subdivisional lines as shown on the official plat of survey accepted August 18, 2010.

The following local surveys and corner restorations filed in the Douglas County Surveyor's Office are referred to in the subsequent corner descriptions and are referenced by surveyor's last name, official title or Professional Land Surveyor (PLS) No., and date.

Date	Name and Registration Number	File Number
1957	Douglas County Surveyors Office	CS 49/7
1959	Douglas County Surveyors Office	CS 49/100
1991	Douglas County Surveyors Office	CS 64/15
2010	Kristian O. Degroot, PLS No. 1941	M 160-78

The direction of the lines are based on the true meridian as determined by Global Positioning System (GPS) techniques. All measurements along the lines were derived through the use of GPS and conventional survey techniques. Measured distances and directions have been adjusted by computer software that incorporates a least squares adjustment routine. The adjusted mean bearings and mean horizontal ground elevation distances are reported to the nearest second and 0.01 foot.

The lottings and areas are as shown on the plats approved July 7, 1856, and March 19, 1909.

The lines of the official original survey and resurvey were retraced and a search was made for all corners, lines, other calls of record, and where available, collateral evidence of local surveys and corners. Identified corners were remonumented in their original positions. The retracement data were thoroughly verified and only the true line field data are given hereon.

The geographic positions shown hereon were determined by direct observation utilizing dual frequency, carrier phase GPS receivers, and processed using the National Geodetic Survey's Online Positioning User Service (OPUS).

The survey was executed in accordance with the specification set forth in the Manual of Surveying Instructions (2009), and the special instructions approved April 28, 2010, for Group No. 2500, Oregon, Administrative File Number 1302, by George M. Winter, Cadastral Surveyor, beginning March 28, 2013, and completed May 14, 2013. He was assisted by Robert NMI Durning, and Marc A. Montpas, Surveying Technicians.

UNITED STATES DEPARTMENT OF THE INTERIOR
BUREAU OF LAND MANAGEMENT

Portland, Oregon

The survey represented by this plat, having been correctly executed in accordance with the requirements of law and the regulations of this Bureau, is hereby accepted.

For the Director

Mary J. M. Hantel

Chief Cadastral Surveyor of Oregon

June 26, 2014
Date

OFFICIALLY FILED: 7/9/2014