

TOWNSHIP 29 SOUTH, RANGE 9 WEST, OF THE WILLAMETTE MERIDIAN, OREGON

RETRACEMENT

FILED
 Date: 3/20/2013 By: JC
 This survey consists of:
 Map: PLAT 2013-1 T29-9
 Narrative: VOL. 58 PG 22977
 Corner Rpt: THIS PLAT REPRESENTS THE ENTIRE RECORD OF THE DEPENDENT RESURVEY
 DOUGLAS COUNTY SURVEYOR

OFFICIALLY FILED: 1/25/2013

This plat constitutes the entire record of the retracement of a portion of the subdivisional lines, Township 29 South, Range 9 West, Willamette Meridian, Oregon.

The history of the official surveys pertaining to this survey is as follows:

In 1855, Dennis Hathorn, U.S. Deputy Surveyor, surveyed a portion of the subdivisional lines as shown on the official plat of survey approved July 7, 1856.

In 1966, John M. Jelley, Cadastral Surveyor, resurveyed a portion of the east boundary and subdivisional lines and remonumented certain original corner points as shown on the official plat of survey accepted January 23, 1969.

In 1989-90, Wayne L. Rogers, Cadastral Surveyor, and Garry L. Moore, Surveying Technician, resurveyed a portion of the subdivisional lines and subdivided section 35 as shown on the official plat of survey accepted April 29, 1993.

The following surveys and corner restorations filed in the Douglas County Surveyor's Office are referred to in subsequent corner description and are referenced by surveyor's last name, official title or Professional Land Surveyor (PLS) No., and year.

Date	Name and Registration Number	File Number
1943	Arthur Boyer, Deputy Co. Surveyor	Vol 4 pg 96
1959	James Byron, Deputy Co. Surveyor	CS 49/100
1987	Kristian O. Degroot, PLS 1941	CS 63/35-4

The direction of the line is based on the true meridian as determined by Global Positioning Systems (GPS) techniques and direct solar observation, carried forward by sustained angulation using conventional survey techniques. All measurements along the lines were derived through the use of GPS and conventional survey techniques. Measured distances and directions have been adjusted by computer software that incorporates a least squares adjustment routine. The adjusted mean bearing and mean horizontal ground elevation distance are reported to the nearest second and 0.01 foot.

The lines of the official original survey and resurvey were retraced and a search was made for all corners, lines, other calls of record, and where available, collateral evidence of local surveys and corners. Identified corners were perpetuated in their original positions. The retracement data was thoroughly verified and only the true line field data are given hereon.

The geographic position shown hereon was determined by a tie from a temporary GPS control point utilizing dual frequency, carrier phase GPS receivers, and processed using the National Geodetic Survey's Online Positioning User Service (OPUS).

The survey was executed in accordance with the specification set forth in the Manual of Surveying Instructions (2009), and the special instructions approved April 28, 2010, for Group No. 2500, Oregon, Administrative File Number 1210, by A. Bert Skeesick, Cadastral Surveyor, beginning May 31, 2012, and completed June 5, 2012. He was assisted by Robert NMI Durning, Thomas A. Hollamon, and Marc A. Montpas, Surveying Technicians.

UNITED STATES DEPARTMENT OF THE INTERIOR
BUREAU OF LAND MANAGEMENT

Portland, Oregon

The survey represented by this plat, having been correctly executed in accordance with the requirements of law and the regulations of this Bureau, is hereby accepted.

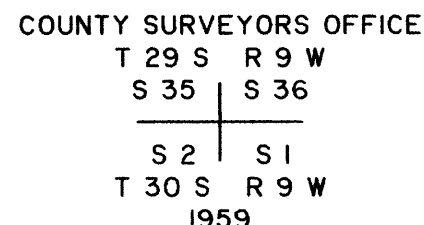
For the Director

Mary J. M. Hart

Chief Cadastral Surveyor of Oregon

January 10, 2013
Date

(A) The cor. of secs. 1, 2, 35, and 36, on the S. bdy. of the Tp., monumented with an iron post, 1 1/4 ins. diam., firmly set, projecting 14 ins. above ground, with brass cap mkd.



from which the remains of the original bearing trees

A sawed, decayed fir stump, size indeterminate, bears N. 6 1/4° E., 23.1 ft. dist., with no marks visible. (Record, N. 1° E.)

A roothole bears N. 57° W., 5.9 ft. dist., with decayed stump fragments lying alongside.

and remains of bearing trees mkd. by Boyer, Deputy County Surveyor, in 1943

A decayed maple stump, size indeterminate, bears N. 5° E., 34.3 ft. dist., with no marks visible. (Record, N. 5° W.)

A decayed fir stump, size indeterminate, bears S. 42° W., 2.0 ft. dist., with no marks visible.

and a bearing tree mkd. by Byron, Deputy County Surveyor, in 1959

A cedar, 34 ins. diam., bears S. 66 3/4° E., 123.5 ft. dist., with a healed blaze. (Record, S. 66° E., 124.7 ft.)

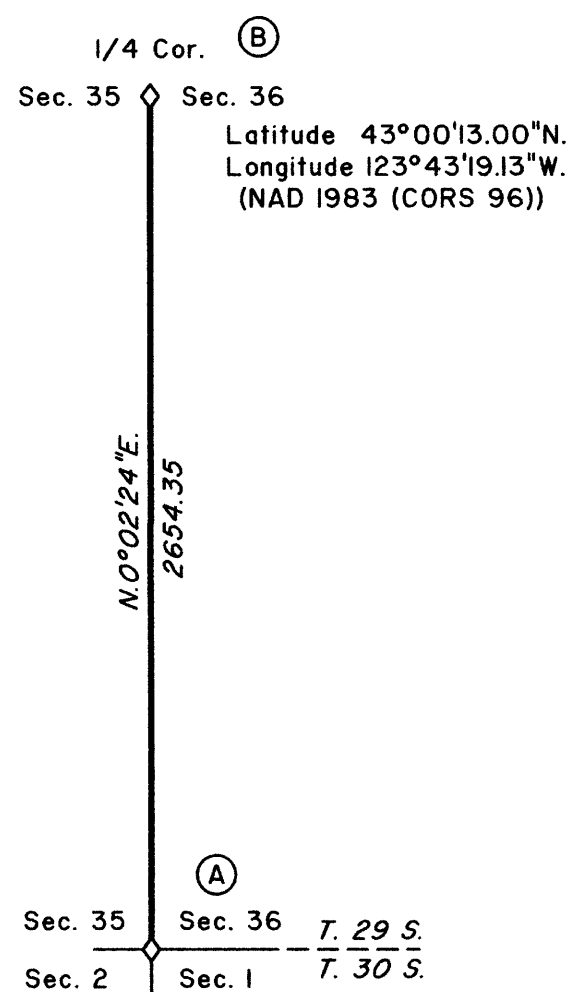
and remaining bearing tree mkd. by Jelley in 1966

A fir, 27 ins. diam., bears S. 65 1/2° W., 30.4 ft. dist., with a healed blaze. (Record, S. 75° W.)

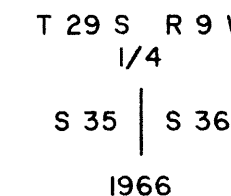
and a new bearing tree

A fir, 9 ins. diam., bears N. 39 1/4° E., 21.3 ft. dist., mkd. T29S R9W S36 BT.

Corner is located 24 ft. N. of an old graveled road, 16 ft. wide, bears N. 20° E. and S. 30° W., and 72 ft. N. of the Middle Fork Coquille River, 22 ft. wide, course S. 20° W.



(B) The 1/4 sec. cor. of secs. 35 and 36, monumented with an iron post, 2 1/2 ins. diam., firmly set, projecting 4 ins. above ground, with brass cap mkd.



from which the remaining bearing tree mkd. by Jelley in 1966

A fir, 28 ins. diam., bears N. 83° W., 72.3 ft. dist., with a healed blaze.

and bearing trees mkd. by DeGroot, PLS No. 1941, in 1987

A fir, 24 ins. diam., bears N. 36° E., 99.0 ft. dist., with a healed blaze.

A fir, 19 ins. diam., bears S. 66° W., 26.7 ft. dist., with a healed blaze.

LEGEND

◇ Original corner previously remonumented

I, A. Bert Skeesick, Cadastral Surveyor, HEREBY CERTIFY upon honor, that in pursuance of special instructions bearing the approval date of the 28th day of April, 2010, and the assignment instructions bearing the date of the 18th day of May, 2012, I have retraced a portion of the subdivisional lines, Township 29 South, Range 9 West, Willamette Meridian, Oregon, which is represented upon this plat as having been executed by me and under my direction; and that said survey has been made in strict conformity with said special instructions, the Manual of Surveying Instructions, and in the specific manner described on this plat.

A. Bert Skeesick
Cadastral Surveyor

January 8, 2013
Date

