

# TOWNSHIP 29 SOUTH, RANGE 9 WEST, OF THE WILLAMETTE MERIDIAN, OREGON

## DEPENDENT RESURVEY

FILED  
 Date: 10/29/2010 By: JC  
 This survey consists of:  
 Map: BLM LINE NOTES  
 Narrative: VOL. 56  
 Corner Rpt: PGS 22240-22254  
 DOUGLAS COUNTY  
 SURVEYOR

A history of surveys is contained in the field notes.

This plat represents a dependent resurvey of a portion of the subdivisional lines, T. 29 S., R. 9 W., Willamette Meridian, Oregon, designed to restore the corners in their true original locations according to the best available evidence.

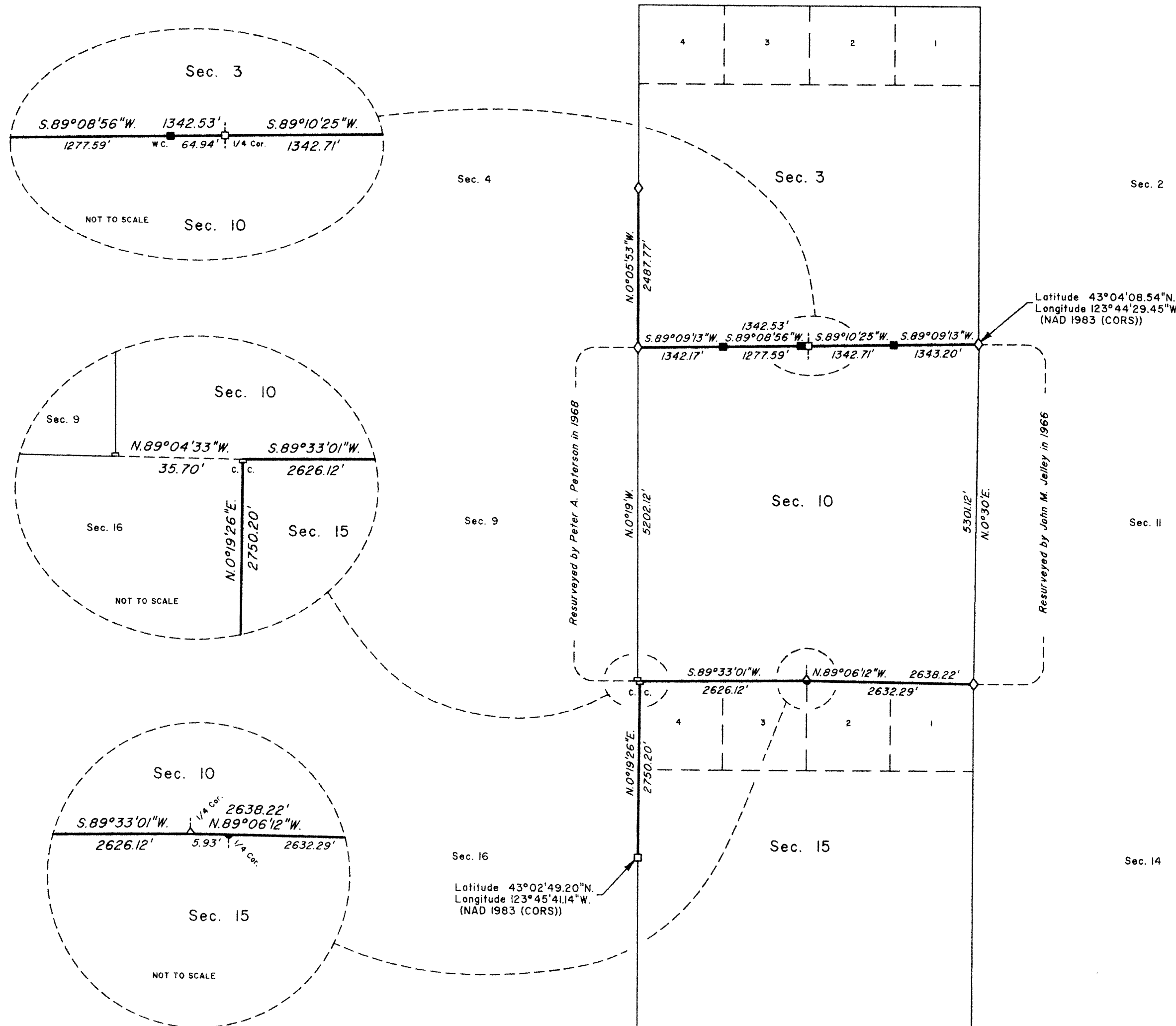
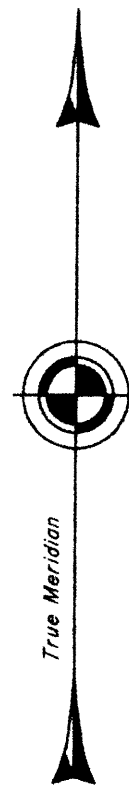
Measured distances and directions have been adjusted by Trimble Geomatics Office (TGO) and Cadastral Measurement Management (CMM) for GPS and conventional measurements respectively; both are computer software which incorporates a least squares adjustment routine. The adjusted bearings and distances are reported to the nearest second and 0.01 foot.

The lottings and areas are as shown on the plats approved December 17, 1875 and March 19, 1909.

The survey was executed by A. Bert Skeesick, Cadastral Surveyor, beginning September 27, 2004, and completed May 19, 2005, pursuant to Special Instructions dated July 21, 2004, under Group Number 2092, Oregon.

Timber in this area consists of fir, cedar, madrone, oak, maple and alder.

OFFICIALLY FILED: 10/29/2010



LEGEND

- ◊ Original corner previously remonumented
- Corner previously established or reestablished
- Corner previously established or reestablished; remonumented this survey
- Corner established or reestablished this survey

UNITED STATES DEPARTMENT OF THE INTERIOR  
 BUREAU OF LAND MANAGEMENT

Portland, Oregon

This plat is strictly conformable to the approved field notes, and the survey, having been correctly executed in accordance with the requirements of law and the regulations of this Bureau, is hereby accepted.

For the Director

*Mary J. M. Henth*

Chief Cadastral Surveyor of Oregon

*August 18, 2010*

Date

