

# TOWNSHIP 29 SOUTH, RANGE 9 WEST, OF THE WILLAMETTE MERIDIAN, OREGON

FILED  
Date: 2/1/2010 By: JC  
This survey consists of:  
Map MAP IN BOOK A COPY IN:  
Name: VOL 56 PAGE 21925  
Corner Plat

DOUGLAS COUNTY  
SURVEYOR

## RETRACEMENT AND REHABILITATION

This plat represents the entire survey record of the retracement of a portion of the subdivisional lines, and the rehabilitation of the 1/4 section corner of sections 34 and 35, T. 29 S., R. 9 W., Willamette Meridian, Oregon.

The history of the surveys pertaining to this retracement is as follows:

In 1855, Dennis Hathorn, U.S. Deputy Surveyor, surveyed the east and south boundaries, portions of the north boundary and subdivisional lines.

In 1855-56, Josiah A. Burnett, U.S. Deputy Surveyor, surveyed the Donation Land Claims.

In 1966, John M. Jelley, Cadastral Surveyor, dependently resurveyed a portion of the east boundary and subdivisional lines, and remonumented certain original corner points.

In 1989-90, Wayne L. Rogers, Cadastral Surveyor, and Garry L. Moore, Surveying Technician, dependently resurveyed a portion of the subdivisional lines and subdivided section 35.

The direction of the lines were determined by direct solar observations, carried forward by sustained angulation, and refers to the true meridian.

The survey was performed utilizing both conventional (directly measured angles and distances) and NAVSTAR Global Positioning System (GPS) satellite techniques. The GPS measurements utilized dual frequency, carrier phase GPS receivers. The baselines were computed in and adjusted by least squares analysis. Conventionally measured distances and directions have been adjusted by computer software that incorporates a least squares adjustment routine. The adjusted bearings and distances are reported to the nearest second and 0.01 foot.

The retracement and rehabilitation was executed by A. Bert Skeesick, Cadastral Surveyor, beginning October 9, 2007, and completed October 11, 2007, pursuant to Special Instructions dated March 16, 2007, approved March 21, 2007, and Assignment Instructions dated September 11, 2007 under Group Number 2300, Oregon.

The geodetic position shown hereon was determined by NAVSTAR GPS, utilizing dual frequency, carrier phase GPS receivers, relative to the National Spatial Reference System.

LEGEND

- ◊ Original corner previously remonumented
- ◆ Original corner remonumented this survey

UNITED STATES DEPARTMENT OF THE INTERIOR  
BUREAU OF LAND MANAGEMENT

Portland, Oregon

The retracement and rehabilitation represented by this plat, having been correctly executed in accordance with the requirements of law and the regulations of this Bureau, is hereby accepted.

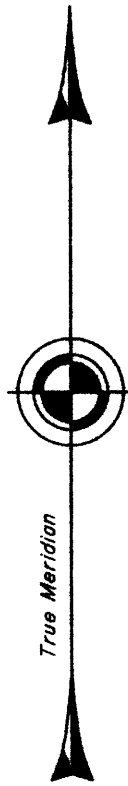
For the Director

*Mary J. M. Hartzel*

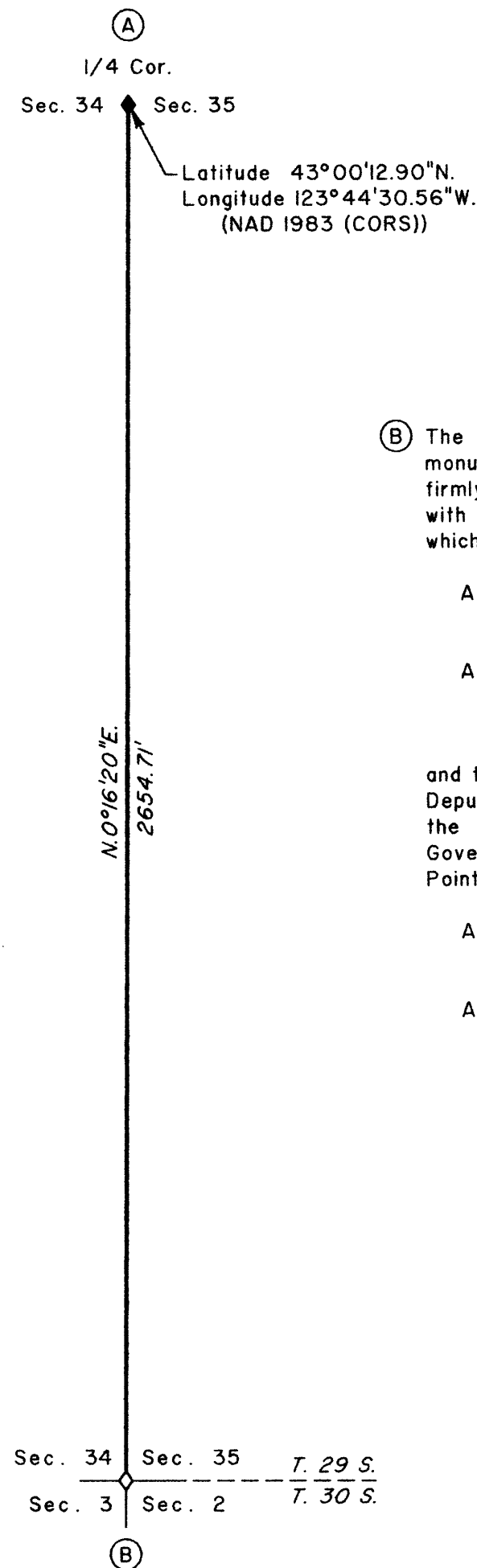
Chief Cadastral Surveyor of Oregon

*October 23, 2009*

Date



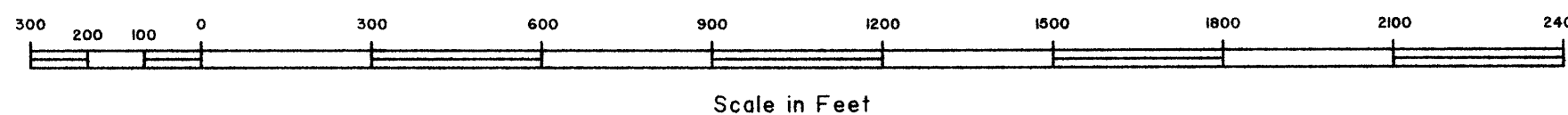
- (A) The 1/4 sec. cor. of secs. 34 and 35, monumented with an iron post, 1 1/2 ins. diam., firmly set, projecting 11 ins. above the ground, with brass cap mkd. as reported in 1989-90, from which the remains of bearing trees mkd. by James W. Byron, Deputy County Surveyor, in 1957, recorded in the Douglas County Surveyors Record of Government Corners Renewed, T. 29 S., R. 9 W., Point Identifier No. 500140, reported by Rogers and Moore
- A fir, 28 ins. diam., bears N. 54 1/2° E., 274.6 ft. dist., with a healed double blaze.
  - A sawed and burnt cedar stump, 24 ins. diam., bears N. 68° W., 59.4 ft. dist., with scribe marks 1/4 S34 CS BT visible on an open blaze.
- and the remains of bearing trees mkd. by Rogers, and Moore
- A fir, 11 ins. diam., bears N. 30 1/4° E., 9.2 ft. dist., with a healed blaze.
  - A sawed fir stump, 14 ins. diam., bears N. 57 1/4° W., 9.2 ft. dist., with a healed blaze.
- and a new bearing tree
- A fir, 6 ins. diam., bears S. 81 1/2° W., 103.9 ft. dist., mkd. 1/4 S34 BT.



I, A. Bert Skeesick, Cadastral Surveyor, HEREBY CERTIFY upon honor, that in pursuance of Special Instructions bearing date of the 16th of March, 2007, I have retraced a portion of the subdivisional lines, and rehabilitated the 1/4 section corner of sections 34 and 35, Township 29 South, Range 9 West, Willamette Meridian, Oregon, which is represented upon this plat as having been executed by me and under my direction. Said retracement and rehabilitation have been made in strict conformity with said special instructions, the Manual of Instructions for the Survey of the Public Lands of the United States, 1973, and in specific manner described on this plat.

*A. Bert Skeesick*  
Cadastral Surveyor

*October 6, 2009*  
Date



OFFICIALLY FILED: 1/12/2010