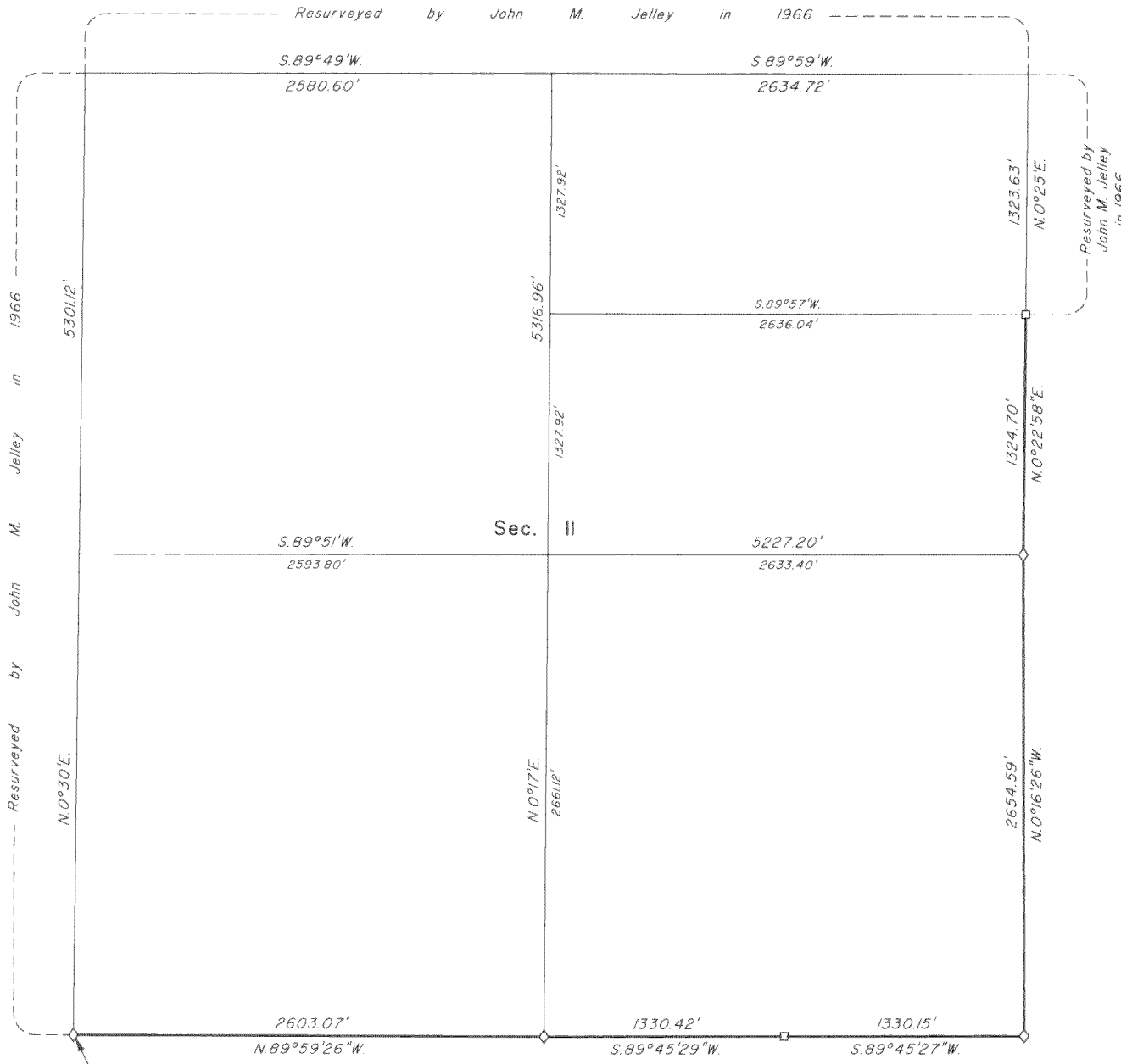


TOWNSHIP 29 SOUTH, RANGE 9 WEST, OF THE WILLAMETTE MERIDIAN, OREGON

DEPENDENT RESURVEY

FILED
 Date: 11/18/2008 By: JC
 This survey consists of:
 Map: LINE NOTES IN VOL 55
 Narrative:
 Corner Rpt: PAGES 21489-97
 DOUGLAS COUNTY
 SURVEYOR



A history of surveys is contained in the field notes.

This plat represents a dependent resurvey of a portion of the subdivisional lines, T. 29 S., R. 9 W., Willamette Meridian, Oregon, designed to restore the corners in their true original locations according to the best available evidence.

Measured distances and directions have been adjusted by computer software that incorporates a least squares adjustment routine. The adjusted bearings and distances are reported to the nearest second and 0.01 foot.

The lottings and areas are as shown on the plat approved July 7, 1856.

The survey was executed by A. Bert Skeesick, Cadastral Surveyor, and Robert H. Browning, Surveying Technician, beginning April 30, 2007, and completed May 21, 2007, pursuant to Special Instructions dated January 23, 2007, under Group Number 2158, Oregon.

Note: The lightweight subdivision of section lines of section II were surveyed by Jack W. Bowder, John P. Farnsworth, and Wayne L. Rogers in 1979-82.

LEGEND

- ◊ Original corner previously remonumented
- Corner previously established or reestablished

UNITED STATES DEPARTMENT OF THE INTERIOR
 BUREAU OF LAND MANAGEMENT

Portland, Oregon

This plat is strictly conformable to the approved field notes, and the survey, having been correctly executed in accordance with the requirements of law and the regulations of this Bureau, is hereby accepted.

For the Director

John P. Farnsworth, Acting
 Chief Cadastral Surveyor of Oregon

10/24/2008
 Date