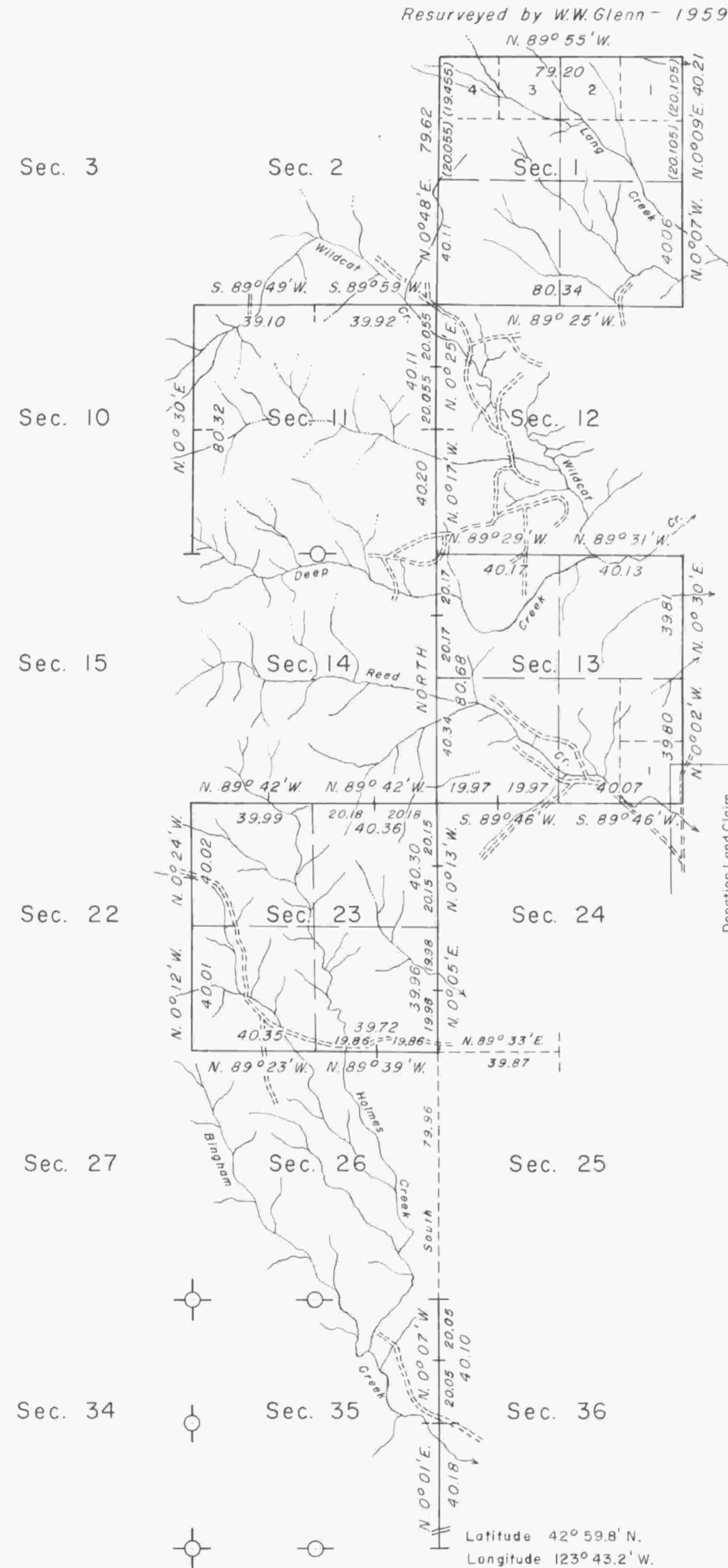


# TOWNSHIP 29 SOUTH, RANGE 9 WEST, OF THE WILLAMETTE MERIDIAN, OREGON.

DEPENDENT RESURVEY AND REMONUMENTATION

Resurveyed by W.W. Glenn - 1959



This plat represents a retracement and reestablishment of a portion of the east boundary, a portion of the subdivisional lines, and, remonumentation of certain original corner points, designed to restore the corners in their true original locations according to the best available evidence.

The lottings and areas are as shown on the plats approved July 7, 1856, and August 29, 1860.

The south and east boundaries and a portion of the north boundary and subdivisional lines, were surveyed by Dennis Hathorn in 1855. The survey of the north boundary was completed, and a portion of the subdivisional lines were surveyed by W. S. Chapman in 1875. A portion of the subdivisional lines were retraced and the survey of the township was completed by William M. Porter in 1907. A portion of the north boundary was resurveyed in 1959 by William W. Glenn.

Survey executed by John M. Jelley, Cadastral Surveyor, August 29 to October 7, 1966, under Special Instructions dated May 3, 1957, and January 24, 1966, which provide for the surveys included under Group Nos. 350 and 606, Oregon.

⊕ Corner remonumentation under Group No. 350.



Mean Magnetic Declination 19° 30' East

UNITED STATES DEPARTMENT OF THE INTERIOR  
BUREAU OF LAND MANAGEMENT  
Washington, D. C. January 23, 1969

This plat is strictly conformable to the approved field notes, and the survey, having been correctly executed in accordance with the requirements of law and the regulations of this Bureau, is hereby accepted.

For the Director

Chief, Division of Engineering



Area Resurveyed: 1,917.64 Acres

Timber in this area consists of fir, hemlock, cedar, oak, alder, madrone, maple, white fir, chinquapin, and yew.