

Date: 11/28/2011 By: JC
This survey consists of:
Map: THIS MAP AND A COPY
Narrative: IN VOL. 57
Corner Rpt: PAGE 22691

TOWNSHIP 29 SOUTH, RANGE 8 WEST, OF THE WILLAMETTE MERIDIAN, OREGON

RETRACEMENT

DOUGLAS COUNTY
SURVEYOR

This plat constitutes the entire survey record of the retracement of a portion of the subdivisional lines, T. 29 S., R. 8 W., Willamette Meridian, Oregon.

The history of official Federal surveys pertaining to this retracement is as follows:

In 1856, Dennis Hathorn, U.S. Deputy Surveyor, surveyed the subdivisional lines, approved July 7, 1856.

In 1965, Donald R. Beck, Cadastral Surveyor, dependently resurveyed a portion of the subdivisional lines and subdivided section 31, accepted January 24, 1967.

In 2001, A. Bert Skeesick, Cadastral Surveyor, dependently resurveyed a portion of the subdivisional lines and subdivided section 32, accepted May 20, 2004.

In 2004, Timothy J. Moore and A. Bert Skeesick, Cadastral Surveyors, dependently resurveyed a portion of the subdivisional lines and subdivided section 29, accepted January 6, 2006.

The survey was executed in accordance with the specifications set forth in the Manual of Surveying Instructions (2009), the special instructions approved March 21st, 2007, for Group No. 2300, Administrative file No. 1001, Oregon.

The direction of the line was determined by direct solar observation, carried forward by sustained angulation, and refers to the true meridian. All measurements along the lines were derived through the use of electronic measuring equipment. Measured distances and directions have been adjusted by computer software that incorporates a least squares adjustment routine. The adjusted mean bearings and horizontal ground elevation distances are reported to the nearest second and 0.01 foot

Each new bearing tree has a 2 1/2 inch x 1/4 inch magnetic nail (Mag Nail) driven at the base on right side center, unless otherwise noted in the corner description.

Only those lines bounding or crossing public land were blazed.

The geodetic position shown hereon was determined by a tie from a temporary GPS control Point, utilizing dual frequency, carrier phase GPS receivers, relative to the National Spatial Reference System.

Survey was executed by Kenneth W. Saveland, Cadastral Surveyor, beginning March 22, 2010, and completed March 23, 2010. He was assisted by Robert NMI Durning and Joel R. Herzberg, Surveying Technicians.

(A) The 1/4 sec. cor. of secs. 31 and 32, monumented with an iron post, 1 1/2 ins. diam., firmly set, projecting 17 ins. above ground, with a brass cap mkd.

(B) The cor. of secs. 29, 30, 31, and 32, monumented with an iron post, 2 1/2 ins. diam., firmly set, projecting 3 ins. above ground, with a brass cap mkd.

COUNTY SURVEYORS OFFICE
BLM 1965
1/4 S | S
31 | 32
T29S R8W
1958

T 29 S R 8 W
S 30 | S 29
S 31 | S 32
1965

from which the remains of bearing trees mkd. by the Douglas County Surveyors Office in 1958, reported by Skeesick in 2001

from which the remains of original bearing trees

A fir snag, 17 ins. diam., bears N.19° E., 12.5 ft. dist., with a healed double blaze.

An oak, 21 ins. diam., bears S. 76 3/4° E., 68.6 ft. dist., with no marks visible on decayed, partially healed double blazes.

A cedar, 30 ins. diam., bears N. 55 1/2° W., 40.9 ft. dist., with a healed double blaze.

A sawed fir stump, 48 ins. diam., bears S. 8 3/4° W., 116.8 ft. dist., with a healed blaze.

and a new bearing tree

and the remains of a bearing tree mkd. by the Douglas County Surveyors Office in 1923, reported by Moore and Skeesick in 2004

A fir, 12 ins. diam., bears S. 14 3/4° E., 29.3 ft. dist., mkd. 1/4 S32 BT.

A sawed fir stump, 27 ins. diam., bears S. 46° E., 28.4 ft. dist., with no marks visible.

and the remains of a bearing tree mkd. by the Douglas County Surveyors Office in 1965, reported by Moore and Skeesick in 2004

A sawed fir stump, 19 ins. diam., bears N. 57 1/4° E., 13.5 ft. dist., with a healed blaze.

and the remains of bearing trees mkd. by Beck in 1965

A fir, 23 ins. diam., bears S. 4 1/2° W., 93.0 ft. dist., with a healed blaze.

A sawed fir stump, 32 ins. diam., bears N. 65° W., 84.5 ft. dist., with a healed blaze.

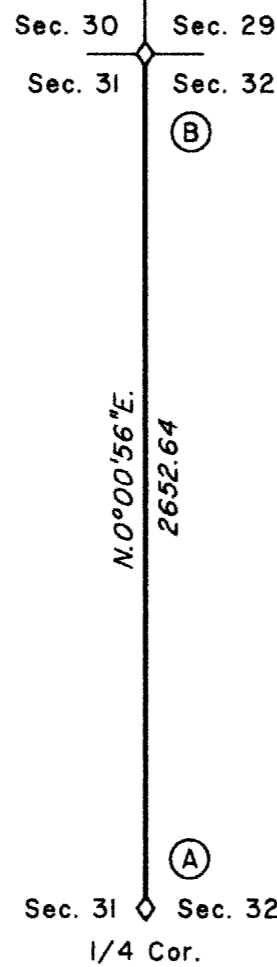
and new bearing trees

A fir, 11 ins. diam., bears N. 55° E., 47.0 ft. dist., mkd. T29S R8W S29 BT.

A fir, 5 ins. diam., bears N. 27° W., 16.6 ft. dist., mkd. X BT.

Corner is located 40 ft. E. of Buck Springs Road, at the intersection of barbed wire fence lines extending N., E., S., and W.

Latitude 43°00'40.10"N.
Longitude 123°40'53.16"W.
(NAD 1983 (CORRS))



I, Kenneth W. Saveland, Cadastral Surveyor, HEREBY CERTIFY upon honor, that in pursuance of special instructions bearing the approval date of the 21st day of March, 2007, and assignment instructions dated March 22, 2010, I have retraced a portion of the subdivisional lines, Township 29 South, Range 8 West, Willamette Meridian, Oregon, which is represented in the upon this plat as having been executed by me and under my direction; and that said survey has been made in strict conformity with said special instructions, the Manual of Surveying Instructions, and in specific manner described in the foregoing field notes.

Kenneth W. Saveland *SEPTEMBER 15, 2011*
Cadastral Surveyor Date

LEGEND
◊ Original corner previously remonumented

UNITED STATES DEPARTMENT OF THE INTERIOR
BUREAU OF LAND MANAGEMENT
Portland, Oregon

The survey represented by this plat, having been correctly executed in accordance with the requirements of law and the regulations of this Bureau, is hereby accepted.

For the Director

Mary J. M. Hentel

Chief Cadastral Surveyor of Oregon

September 23, 2011
Date

