

TOWNSHIP 29 SOUTH, RANGE 8 WEST, OF THE WILLAMETTE MERIDIAN, OREGON

DEPENDENT RESURVEY

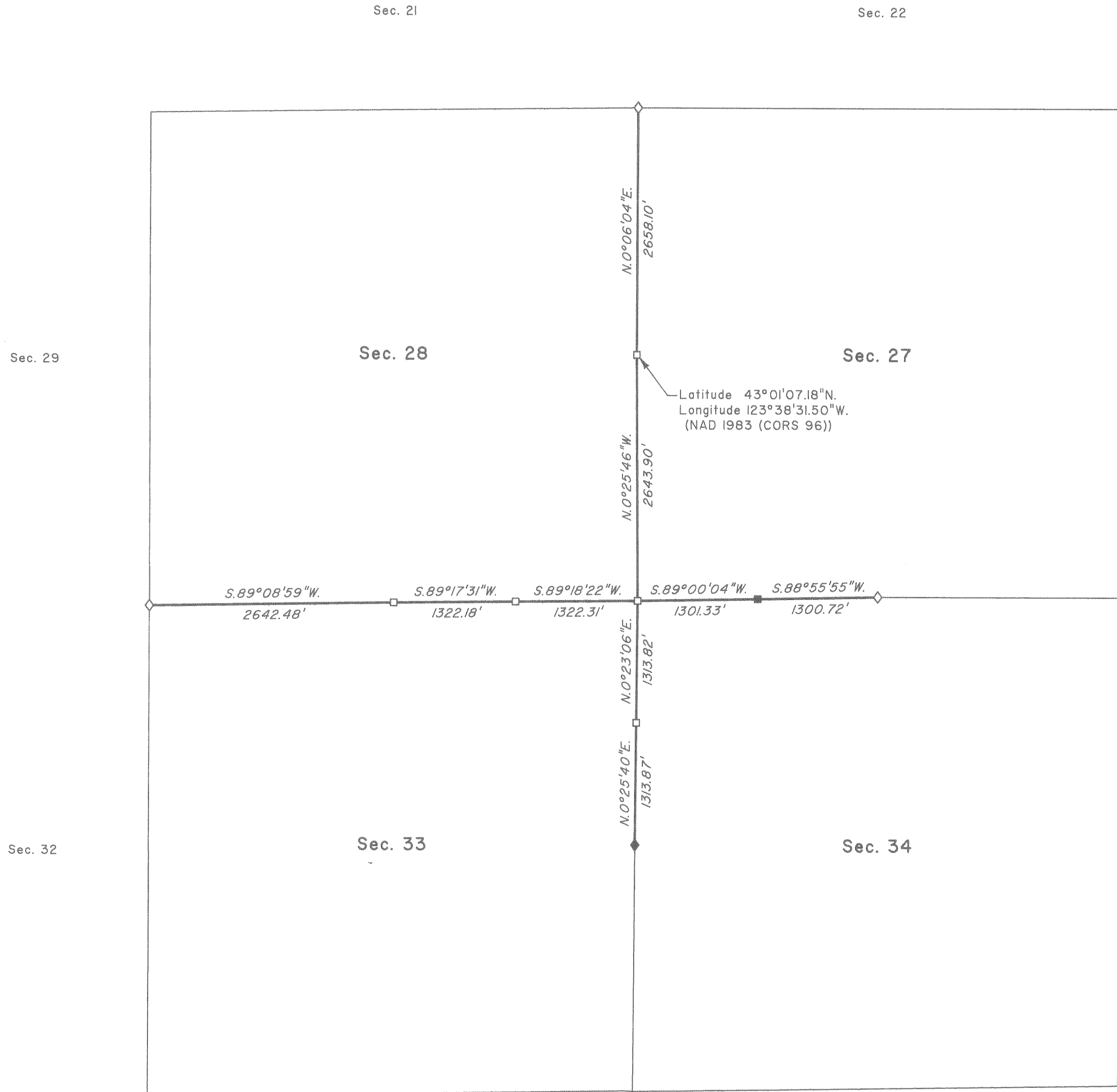
FILED
 Date: 5/17/2011 By: JC
 This survey consists of:
 Map: T29S R8W 2011
 Narrative: VOL 56
 Corner Rpt: PGS 22277-78
 DOUGLAS COUNTY
 SURVEYOR

A history of surveys is contained in the field notes.

This plat represents the dependent resurvey of a portion of the subdivisional lines, T. 29 S., R. 8 W., Willamette Meridian, Oregon, designed to restore the corners in their true original locations according to the best available evidence.

This survey was executed by Kenneth W. Saveland, Cadastral Surveyor, beginning February 4, 2008, and completed March 26, 2008, pursuant to Special Instructions dated January 31, 2008, under Group Number 2196, Oregon.

OFFICIALLY FILED: 5/4/2011



LEGEND	
◇	Original corner previously remonumented
◆	Original corner remonumented this survey
□	Corner previously established or reestablished
■	Corner previously established; remonumented this survey

UNITED STATES DEPARTMENT OF THE INTERIOR
 BUREAU OF LAND MANAGEMENT
 Portland, Oregon

This plat is strictly conformable to the approved field notes, and the survey, having been correctly executed in accordance with the requirements of law and the regulations of this Bureau, is hereby accepted.

For the Director
John P. Fansworth, Acting
 Chief Cadastral Surveyor of Oregon

March 1, 2011
 Date

