

TOWNSHIP 29 SOUTH, RANGE 8 WEST, OF THE WILLAMETTE MERIDIAN, OREGON

DEPENDENT RESURVEY

(B) The cor. of secs. 5, 6, 7, and 8, monumented with an iron post, 2 1/2 ins. diam., firmly set, projecting 5 ins. above the ground, with brass cap mkd. as reported in 1980-82, from which the remains of a bearing tree mkd. by H. L. Eppstein, Douglas County Surveyor, in 1926, reported by Jelley and Rogers

A fir snag, 36 ins. diam., bears N. 76° E., 169.3 ft. dist., with fragmentary scribe marks visible in the bark.

and the remains of bearing trees mkd. by James W. Byron, Deputy County Surveyor, in 1958, recorded in the Douglas County Surveyors Record of Government Corners Renewed, T. 29 S., R. 8 W., Point Identifier No. 200600, reported by Jelley and Rogers

A fir, 13 ins. diam., bears N. 79 3/4° E., 21.8 ft. dist., with a healed blaze (Record N. 82° E.)

A sawed fir stump, 22 ins. diam., bears S. 56 1/2° W., 36.6 ft. dist., with a healed blaze.

and bearing trees mkd. by Jelley and Rogers

A fir, 19 ins. diam., bears S. 31° E., 30.4 ft. dist., with a healed blaze.

A fir, 6 ins. diam., bears N. 39° W., 8.2 ft. dist., with a healed blaze.

and a new bearing tree

A fir, 11 ins. diam., bears S. 66 1/4° W., 12.4 ft. dist., mkd. T29S R8W S7 BT.

(A) The 1/4 sec. cor. of secs. 5 and 8, monumented with an iron post, 2 1/2 ins. diam., firmly set, projecting 4 ins. above the ground, with brass cap mkd. as reported in 1980-82, from which the remains of a bearing tree mkd. by Russell D. Hendricks, Oregon Professional Land Surveyor No. 688, in 1980, recorded in the Douglas County Surveyors Office, Map File No. M84-19, reported by Jelley and Rogers

A decayed hemlock stump, size indeterminate, bears S. 17 1/2° E., 21.8 ft. dist., with no marks visible.

and bearing trees mkd. by Mark F. Smalley, Oregon Professional Land Surveyor No. 2354, in 1995, recorded in the Douglas County Surveyors Office, Map File No. M119-69

A fir, 9 ins. diam., bears S. 23 1/2° W., 33.3 ft. dist., with a healed blaze.

A fir, 10 ins. diam., bears S. 60 3/4° W., 32.4 ft. dist., with a healed blaze.

and a new bearing tree

A fir, 6 ins. diam., bears N. 7 1/4° W., 6.1 ft. dist., mkd. 1/4 S5 BT.

This plat represents the entire survey record of the dependent resurvey of a portion of the subdivisional lines, T. 29 S., R. 8 W., Willamette Meridian, Oregon.

The history of surveys pertaining to this resurvey is as follows:

In 1856, Dennis Hathorn, U.S. Deputy Surveyor, surveyed the north, east, south and west boundaries and the subdivisional lines.

In 1980-82, James E. Jelley and Wayne L. Rogers, Cadastral Surveyors, resurveyed a portion of the subdivisional lines, and subdivided sections 9, 10, 11, and 15.

This survey was executed by A. Bert Skeesick, Cadastral Surveyor, and Robert H. Browning, Surveying Technician, beginning April 30, 2007, and completed May 15, 2007, pursuant to Special Instructions dated January 23, 2007, under Group Number 2159, Oregon. They were assisted by Robert Durning and Thomas A. Hollamon, Surveying Technicians, Karl Krom, Surveying Aide, and Nicholas J. Browning and Michael S. Thompson, Laborers.

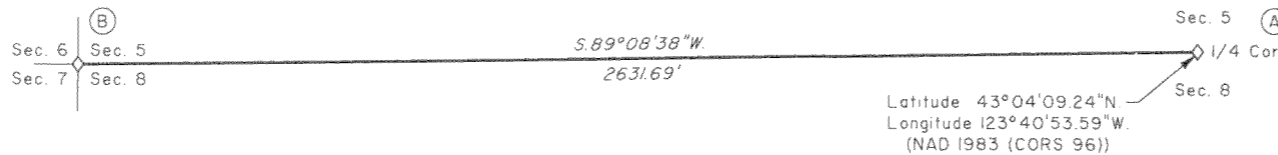
Preliminary to the resurvey, the line of the prior surveys was retraced and search was made for all corners and other calls of record. The retracement data were thoroughly verified and only the true line field notes are given hereon. Only those lines bounding public lands were posted and blazed.

The direction of the line was determined by direct solar observations, carried forward by sustained angulation, and refers to the true meridian.

An analysis of the unadjusted field data assured a closure not exceeding 1:4000 in error. Measured angles and distances have been adjusted by computer software that incorporates a least squares adjustment routine. The adjusted bearings and distances are reported to the nearest second and 0.01 foot.

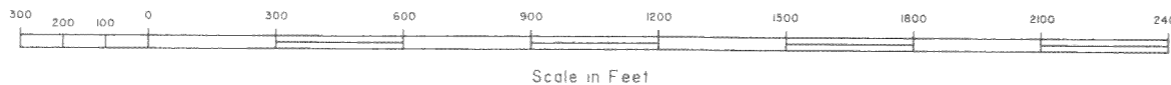
Each new bearing tree has a 2 1/2 inch x 1/4 inch magnetic nail, (MAG-NAIL) driven at the base on right side center, unless otherwise noted in the corner description.

The geographic position shown hereon was determined from a tie to a temporary point for which a position had been determined utilizing dual frequency, carrier phase GPS receivers. Observations were adjusted using software that incorporates a least squares adjustment routine, to an accuracy level of less than 0.05 ft., 95% confidence level, relative to the National Spatial Reference System.



We, A. Bert Skeesick, Cadastral Surveyor, and Robert H. Browning, Surveying Technician, HEREBY CERTIFY upon honor, that in pursuance of Special Instructions bearing date of the 23rd day of January, 2007, we have rehabilitated the 1/4 section corner of sections 5 and 8 and the corner of sections 5, 6, 7, and 8, and have resurveyed a portion of the subdivisional lines, Township 29 South, Range 8 West, of the Willamette Meridian, in the State of Oregon, which is represented upon this plat as having been executed by us and under our direction. Said survey has been made in strict conformity with said special instructions, the Manual of Instructions for the Survey of the Public Lands of the United States, and in specific manner described on this plat.

A. Bert Skeesick 10/22/2008
 Cadastral Surveyor Date
Robert H. Browning 10/22/2008
 Surveying Technician Date



LEGEND
 ◊ Original corner previously remonumented; rehabilitated this survey

UNITED STATES DEPARTMENT OF THE INTERIOR
 BUREAU OF LAND MANAGEMENT
 Portland, Oregon

This plat, which constitutes the entire record of this survey, having been correctly executed in accordance with the requirements of law and the regulations of this Bureau, is hereby accepted.

For the Director
John P. Kamsworth, Acting
 Chief Cadastral Surveyor of Oregon

10/24/2008
 Date