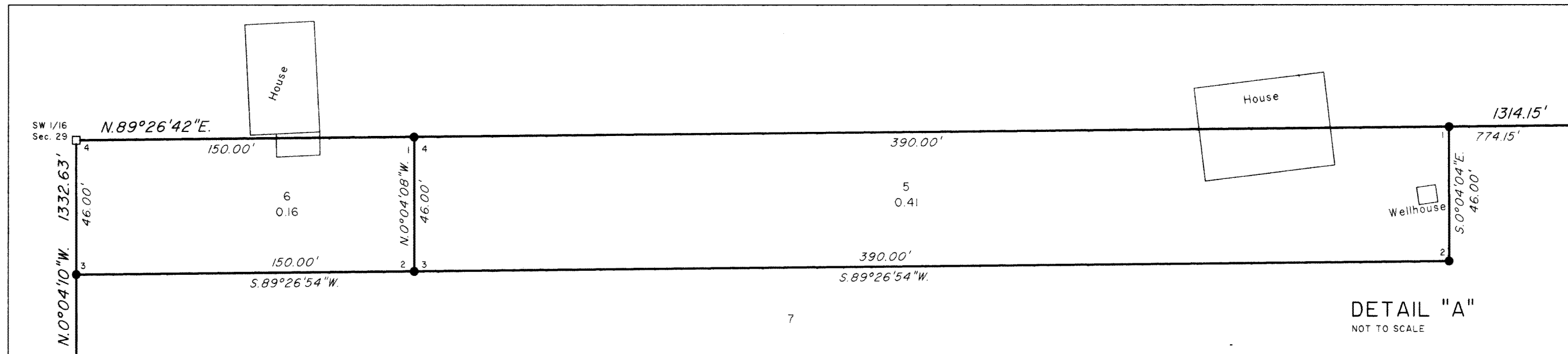


TOWNSHIP 29 SOUTH, RANGE 8 WEST, OF THE WILLAMETTE MERIDIAN, OREGON

DEPENDENT RESURVEY AND SURVEY



A history of surveys is contained in the field notes.

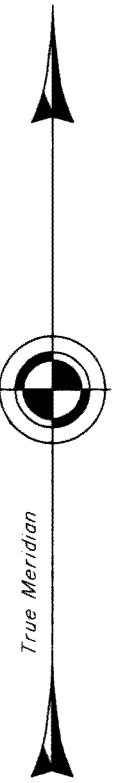
This plat represents a dependent resurvey of a portion of the subdivision of section lines in section 29, T. 29 S., R. 8 W., Willamette Meridian, Oregon, and survey of new Lots 5 and 6 in section 29.

The survey was performed utilizing both terrestrial measurements conventional (directly measured angles and distances) and NAVSTAR Global Positioning System (GPS) satellite techniques. The GPS baselines and conventionally measured distances and directions have been adjusted by software that incorporates a least squares adjustment routine. The adjusted bearings and distances are reported to the nearest second and 0.01 foot.

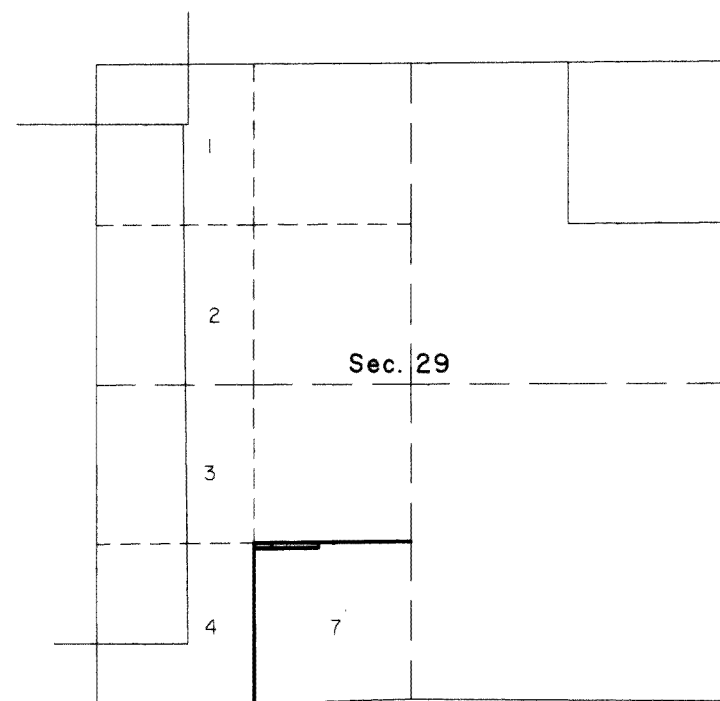
Except as shown hereon, the lottings and areas are as shown on the plats approved July 7, 1856 and June 30, 1863.

The survey was executed by A. Bert Skeesick, Cadastral Survey, beginning May 16, 2006, and completed May 16, 2006, pursuant to Special Instructions dated March 20, 2006, under Group Number 2137, Oregon.

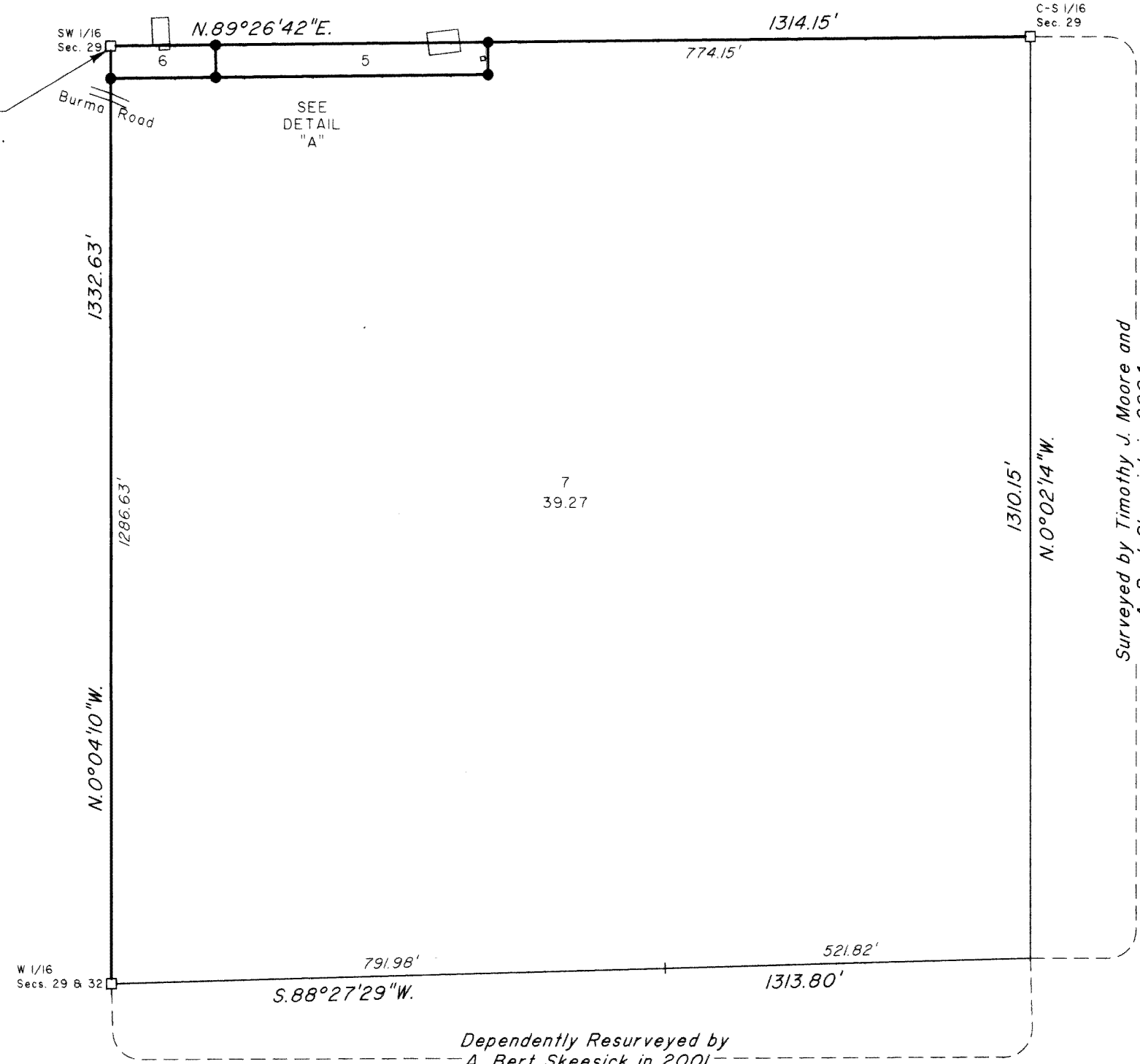
Timber in this area consists of fir, cedar, maple, chinquapin, madrone, and oak.



Latitude 43°00'53.31"N.
Longitude 123°40'35.49"W.
(NAD 1983 (CORSS))



LOCATION DIAGRAM
(NOT TO SCALE)



Surveyed by Timothy J. Moore and
A. Bert Skeesick in 2004

Dependently Resurveyed by
A. Bert Skeesick in 2001

LEGEND

- Corner previously established
- Corner established this survey

UNITED STATES DEPARTMENT OF THE INTERIOR
BUREAU OF LAND MANAGEMENT

Portland, Oregon June 27, 2007

This plat is strictly conformable to the approved field notes, and the survey, having been correctly executed in accordance with the requirements of law and the regulations of this Bureau, is hereby accepted.

For the Director

Chief Cadastral Surveyor of Oregon

