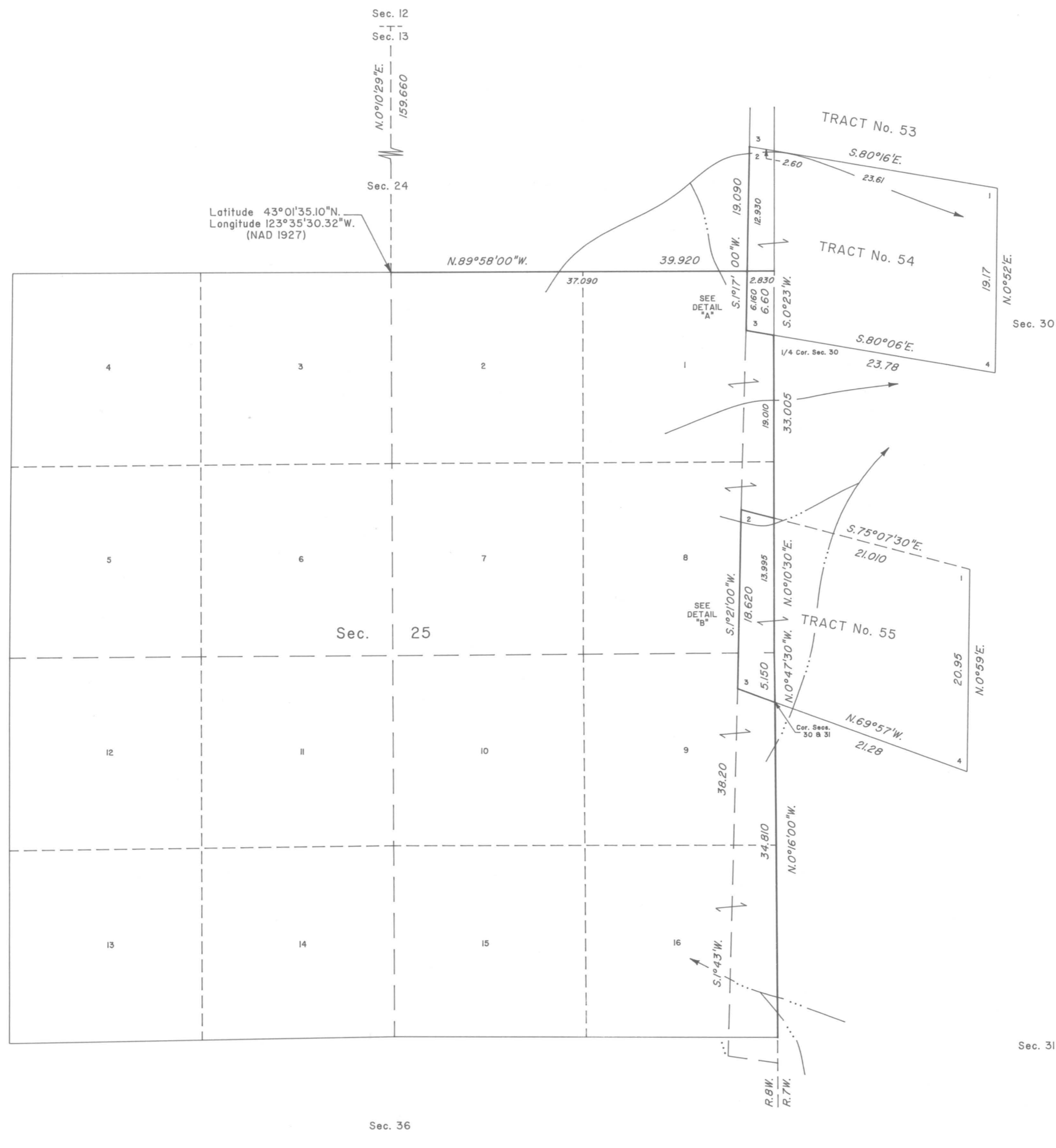
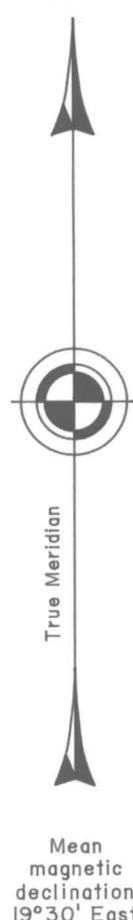
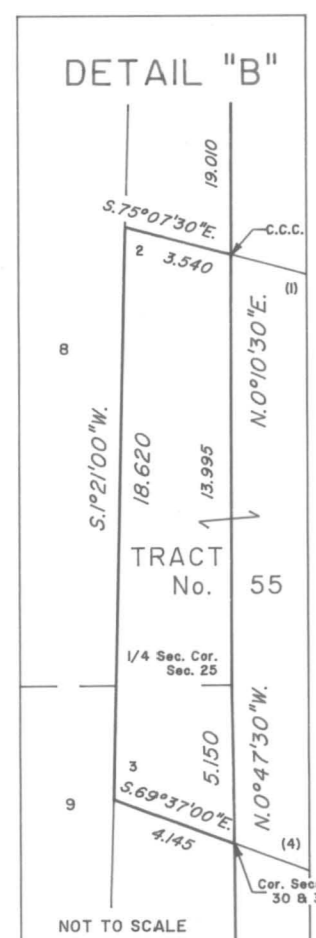
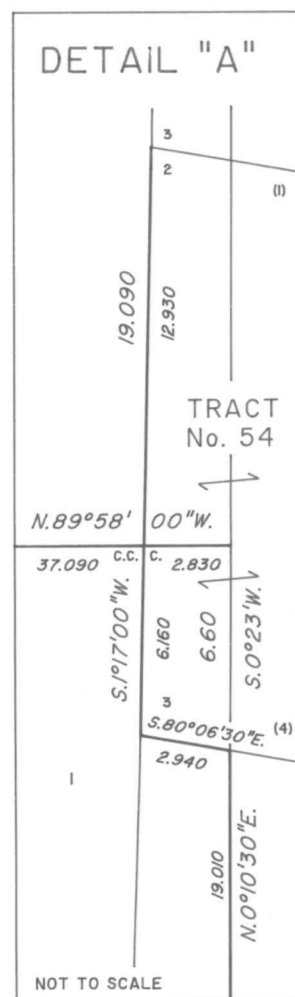


TOWNSHIP 29 SOUTH, RANGE 8 WEST, OF THE WILLAMETTE MERIDIAN, OREGON

DEPENDENT RESURVEY



A history of surveys is contained in the field notes.

This plat represents a dependent resurvey of the east boundary and subdivisional lines, township 29 south, range 8 west, and a portion of the boundaries of Tracts 54 and 55, township 29 south, range 7 west, Willamette Meridian, Oregon, designed to restore the corners in their true original locations according to the best available evidence.

The lottings and areas are as shown on the plat of overlap for Tps. 29 S., Rs. 7 and 8 W., approved February 15, 1926.

The survey was executed by Wayne L. Rogers, Cadastral Surveyor, beginning August 23, 1988, and completed May 11, 1989, pursuant to Special Instructions dated July 26, 1988, and Amendment to Special Instructions dated August 16, 1988, under Group Number 1454, Oregon.

Timber in this area consists of fir, cedar, hemlock, yew, pine, alder, cherry, maple, oak, madrone, willow, ash and chinquapin.

NOTE:
The lightweight lines were surveyed by Fred Mensch in 1924.

UNITED STATES DEPARTMENT OF THE INTERIOR
BUREAU OF LAND MANAGEMENT

Portland, Oregon February 25, 1992

This plat is strictly conformable to the approved field notes, and the survey, having been correctly executed in accordance with the requirements of law and the regulations of this Bureau, is hereby accepted.

For the Director

Wayne M. Gardner

Chief Cadastral Surveyor of Oregon

"Suspended September 15, 2004, see File 9632 (OR957)"

"Suspension Lifted, March 27, 2008, File 9632 (OR957). Refer to plat accepted February 8, 2008."