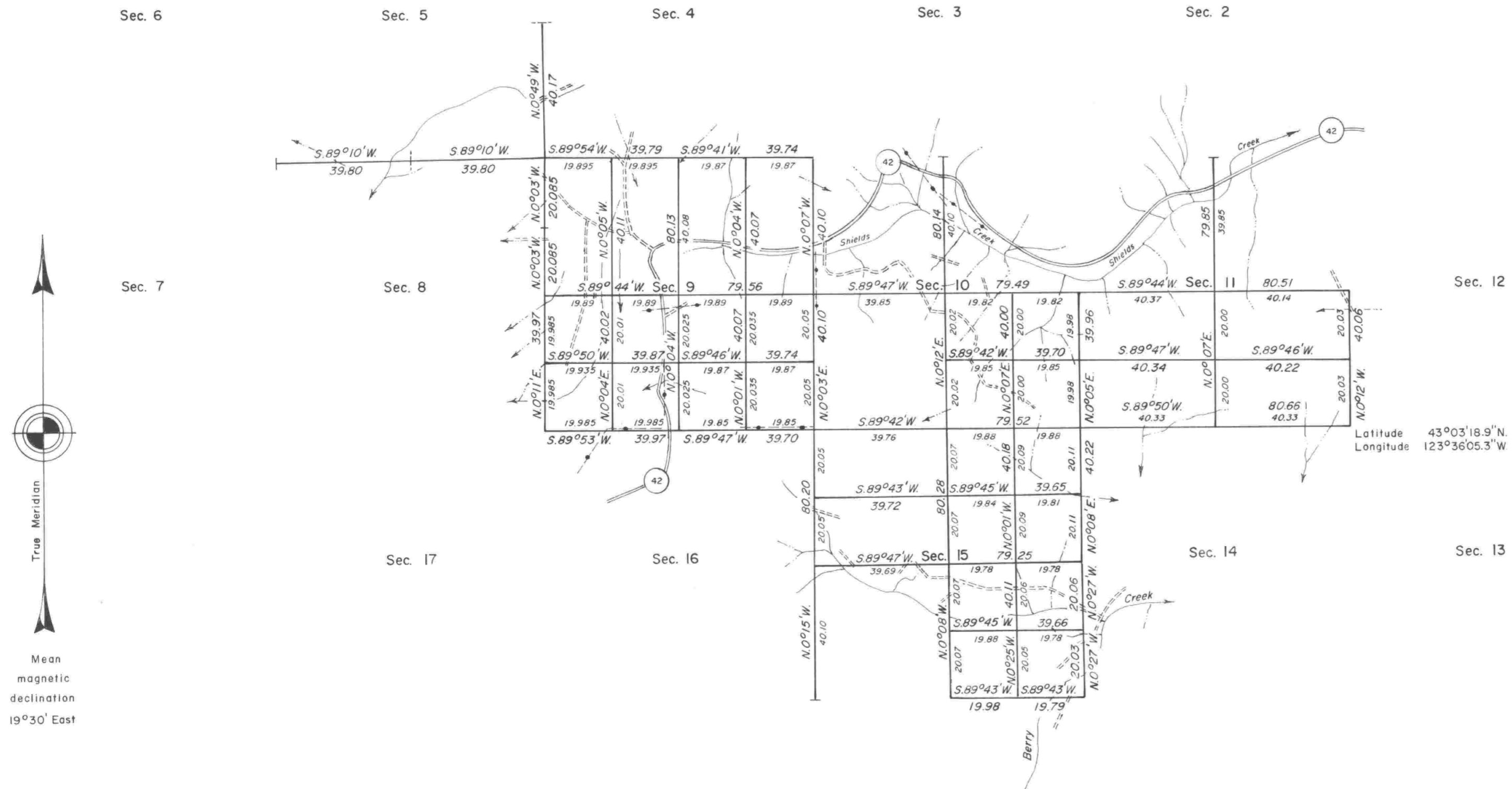


# TOWNSHIP 29 SOUTH, RANGE 8 WEST, OF THE WILLAMETTE MERIDIAN, OREGON.

## DEPENDENT RESURVEY AND SUBDIVISION OF SECTIONS 9, 10, 11, AND 15



A history of surveys is contained in the field notes.

This plat represents a dependent resurvey of a portion of the subdivisional lines of T. 29 S., R. 8 W., Willamette Meridian, Oregon, designed to restore the corners in their true original locations according to the best available evidence, and the subdivision of sections 9, 10, 11, and 15.

The lottings and areas are as shown on the plat approved July 7, 1856.

The survey was executed by James E. Jelley and Wayne L. Rogers, Cadastral Surveyors, beginning May 21, 1980 and completed August 9, 1982, pursuant to Special Instructions dated April 23, 1980, and Supplemental Special Instructions dated July 8, 1982, for Group No. 1027, Oregon.

Timber in this area consists of fir, hemlock, maple, oak, cedar, madrone, myrtle, yew, and chinquapin.

UNITED STATES DEPARTMENT OF THE INTERIOR  
BUREAU OF LAND MANAGEMENT  
Portland, Oregon June 16, 1983

This plat is strictly conformable to the approved field notes, and the survey, having been correctly executed in accordance with the requirements of law and the regulations of this Bureau, is hereby accepted.

For the Director

*William W. Glenn*

Chief Cadastral Surveyor of Oregon