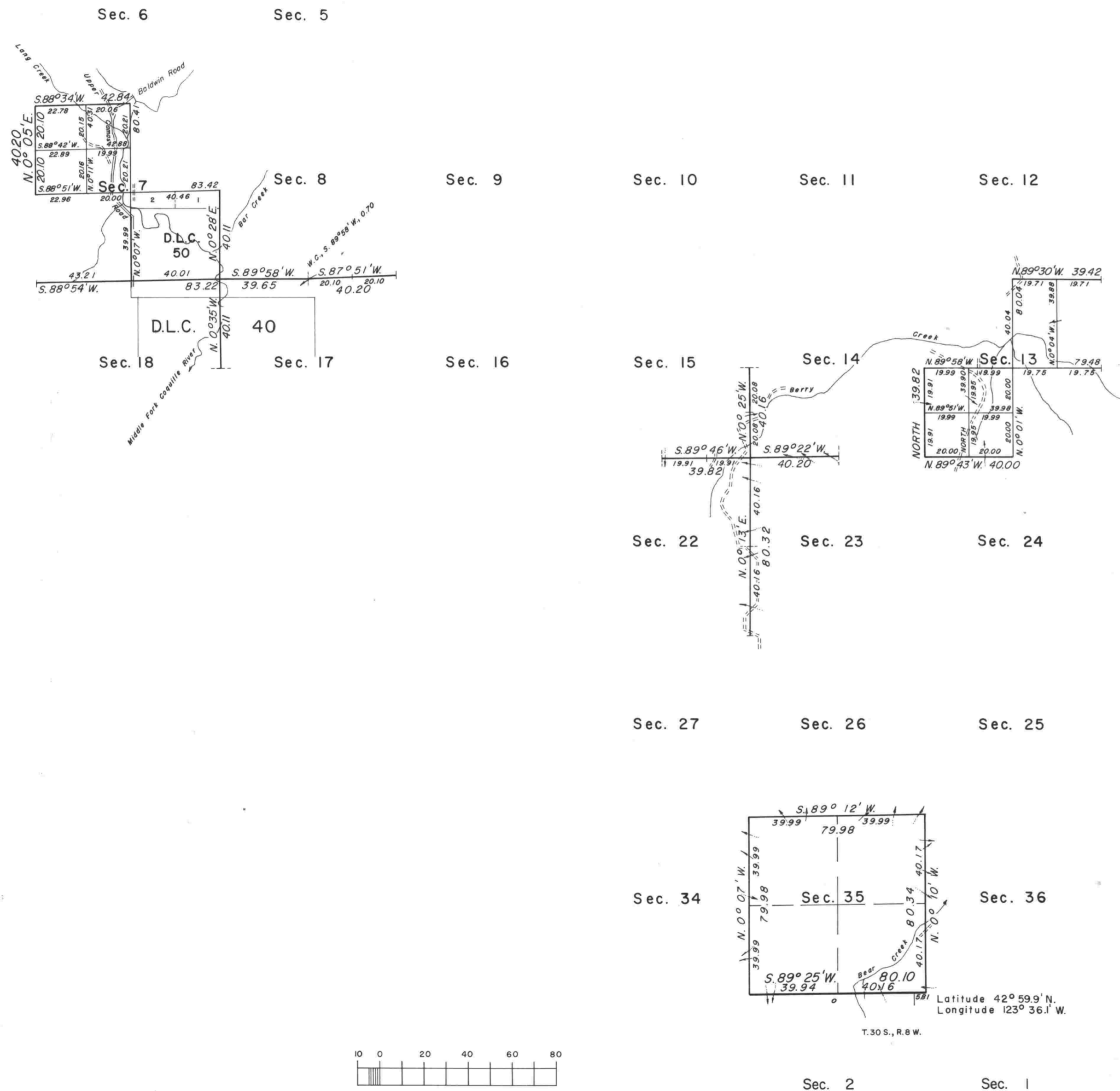


TOWNSHIP 29 SOUTH, RANGE 8 WEST, OF THE WILLAMETTE MERIDIAN, OREGON.

DEPENDENT RESURVEY AND SUBDIVISION OF SECTIONS



This plat represents a dependent resurvey of a portion of the south and west boundaries and a portion of the subdivisional lines, designed to restore the corners in their true original locations according to the best available evidence, and the subdivision of sections 7 and 13, T. 29 S., R. 8 W., Willamette Meridian, Oregon.

Excepting as new or modified vacant subdivisions as shown hereon, the lottings and areas are as shown on the plats approved July 7, 1856, and June 30, 1863, and the plat accepted December 13, 1926.

The west boundary of Township 29 South, Range 7 West. was surveyed by Nathaniel Ford, in 1854.

The south, east and west boundaries of the township and subdivisional lines were surveyed by Dennis Hathorn in 1855, Hathorn established corners along the east boundary of the township and made ties to the corners previously established by Ford to the west of Hathorn's line, creating an overlap of Townships 29 South, Ranges 7 and 8 West.

The south boundary was resurveyed and section corners for Township 30 South, Range 8 West, only were established by William H. Byars, in 1882.

The boundaries of the overlap and a portion of the subdivisional lines were resurveyed by Fred Mensch, in 1924.

The resurvey and subdivision of sections were executed by Charles E. Akin, Jr., and James E. Jelley, Cadastral Surveyors, and Bruce A. Shaner, Registered Land Surveyor No. 4906, from June 26, 1973, to April 7, 1976, under Contract No. 52500-CT5-1117 and under Special Instructions dated April 27, 1973, October 31, 1974, and March 13, 1975, which provide for the surveys included under Group No. 808, 858, and 860, Oregon.

The surveys executed under Contract No. 52500-CT5-1117 were field inspected by William W. Glenn, Contracting Officer's Authorized Representative, and found to have been executed in strict conformance with the Special Instructions, the Manual of Instructions for the Survey of the Public Lands of the United States, 1973, and in the specific manner described in the field notes of this survey.

UNITED STATES DEPARTMENT OF THE INTERIOR
BUREAU OF LAND MANAGEMENT
Washington, D.C. July 20, 1978

This plat is strictly conformable to the approved field notes, and the survey, having been correctly executed in accordance with the requirements of law and the regulations of this Bureau, is hereby accepted.

For the Director

Roger T. Barron

Acting Chief, Division of Cadastral Survey

"Suspended November 8, 1995, see File 9632 (OR957)"
"Suspension Lifted October 23, 1998, File 9632 (OR957)."
Refer to plat accepted September 2, 1998."

Timber in this area consists of fir, hemlock, cedar, madrone, maple, oak, chinquapin, yew, pine, alder, and myrtle.