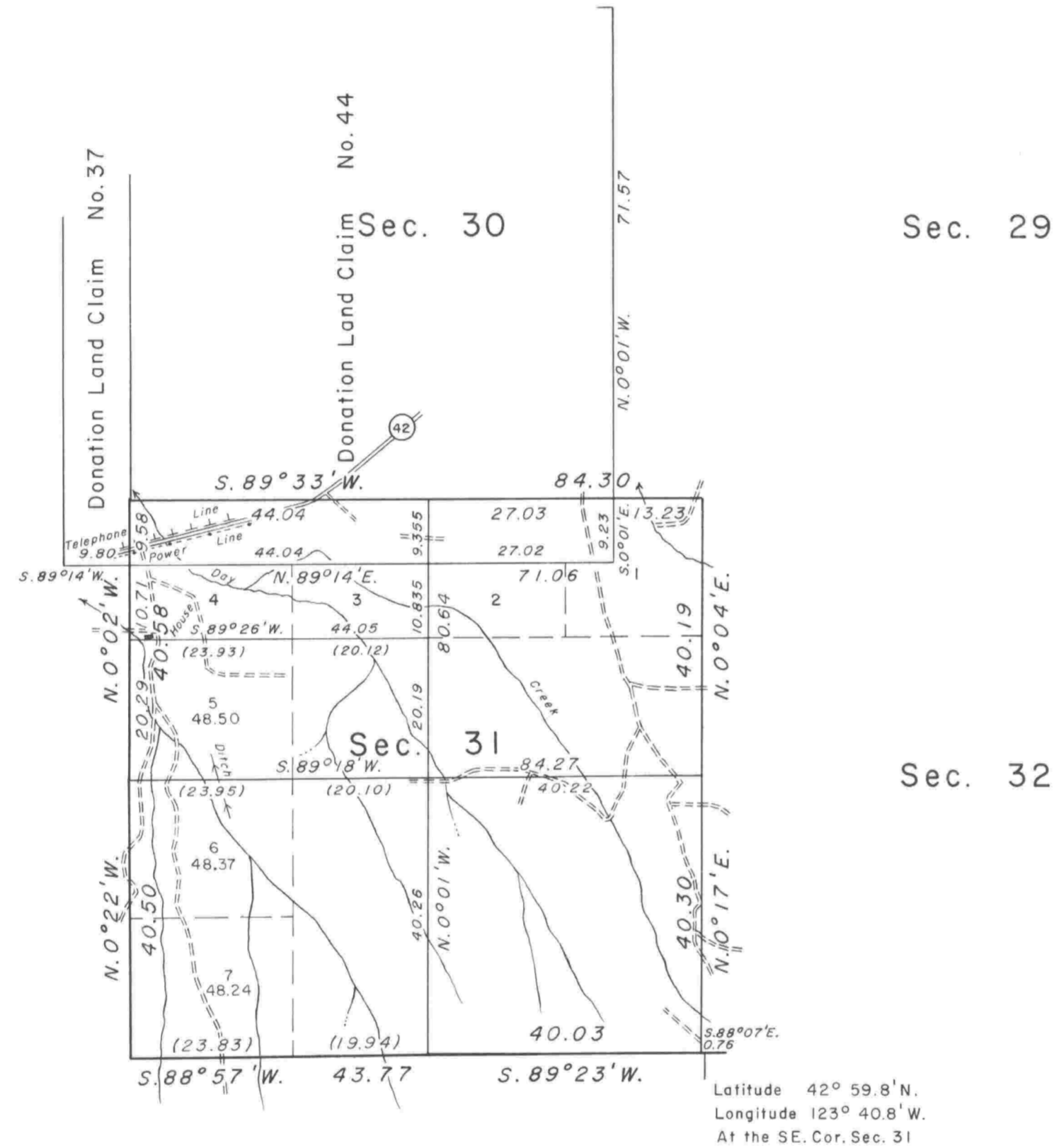
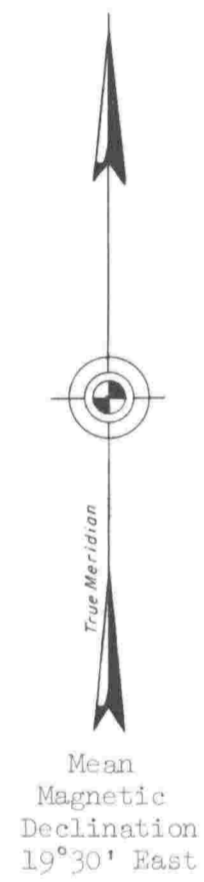


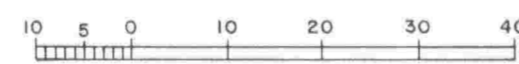
TOWNSHIP 29 SOUTH, RANGE 8 WEST, OF THE WILLAMETTE MERIDIAN, OREGON.

DEPENDENT RESURVEY AND SUBDIVISION



Sec. 6

Sec. 5



Area resurveyed: 672.65 Acres

Timber in this area consists of Douglas fir, white fir, cedar, hemlock, pine, maple, madrone, oak, dogwood, yew, chinquapin, ash, and alder.

This plat represents a retracement and reestablishment of portions of the west boundary, the south boundary, and the subdivisional lines, designed to restore the corners in their true original locations according to the best available evidence, and, the survey of the subdivision of section 31. Except as modified vacant subdivisions are shown hereon, the lottings and areas are as shown on the plats approved July 7, 1856, and June 30, 1863.

The south and west boundaries and subdivisional lines were surveyed by Dennis Hathorn in 1856.

The south boundary was resurveyed by William H. Byars in 1882.

The donation land claims were surveyed by J.A. Burnett in 1856.

Survey executed by Donald R. Beck, July 7 to July 21, 1965, under Special Instructions dated June 8, 1965, which provide for the surveys included under Group No. 584, Oregon.

UNITED STATES DEPARTMENT OF THE INTERIOR
BUREAU OF LAND MANAGEMENT
Washington, D. C. January 24, 1967

This plat is strictly conformable to the approved field notes, and the survey, having been correctly executed in accordance with the requirements of law and the regulations of this Bureau, is hereby accepted.

For the Director

R.E. Brown

Acting Chief, Division of Engineering