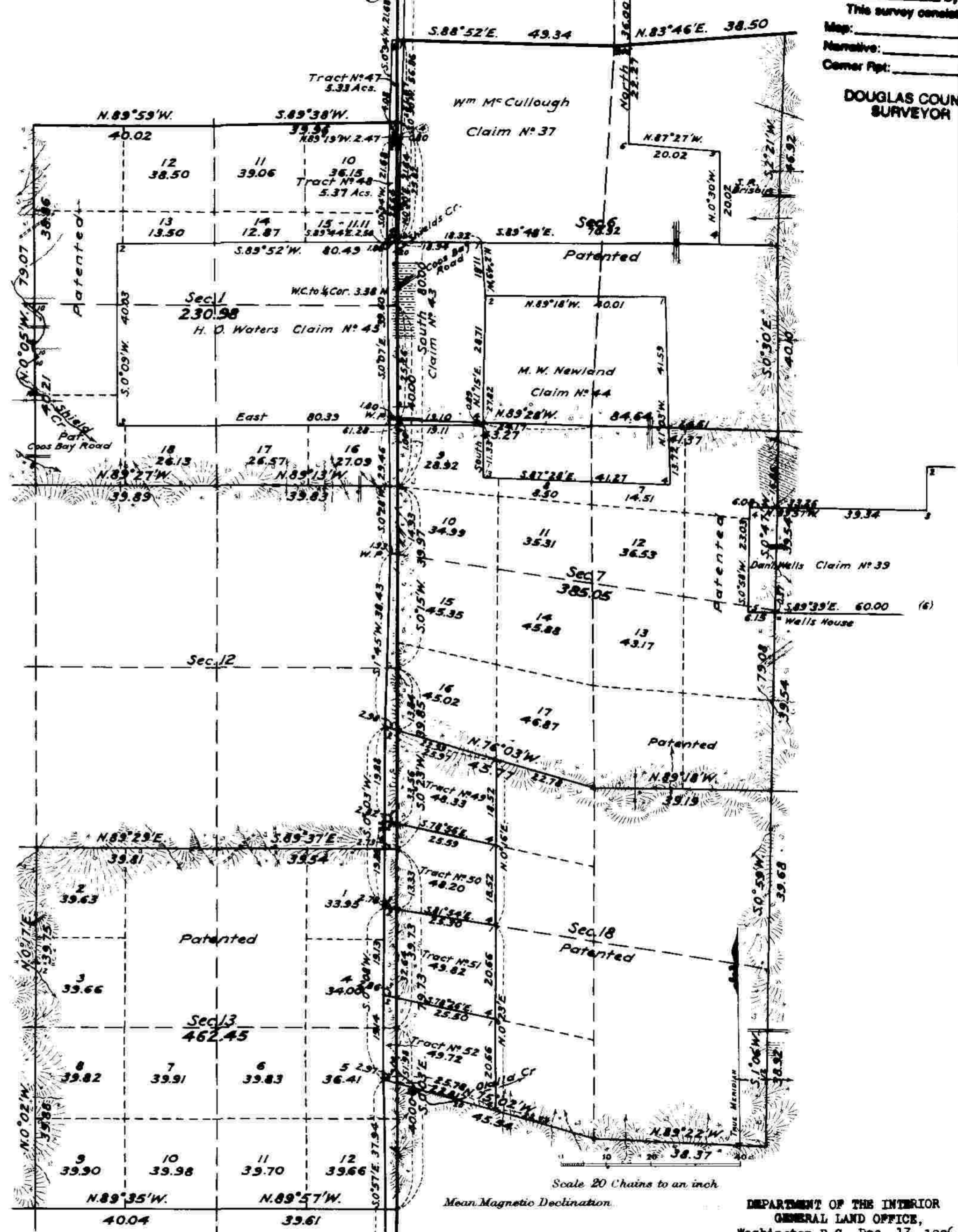
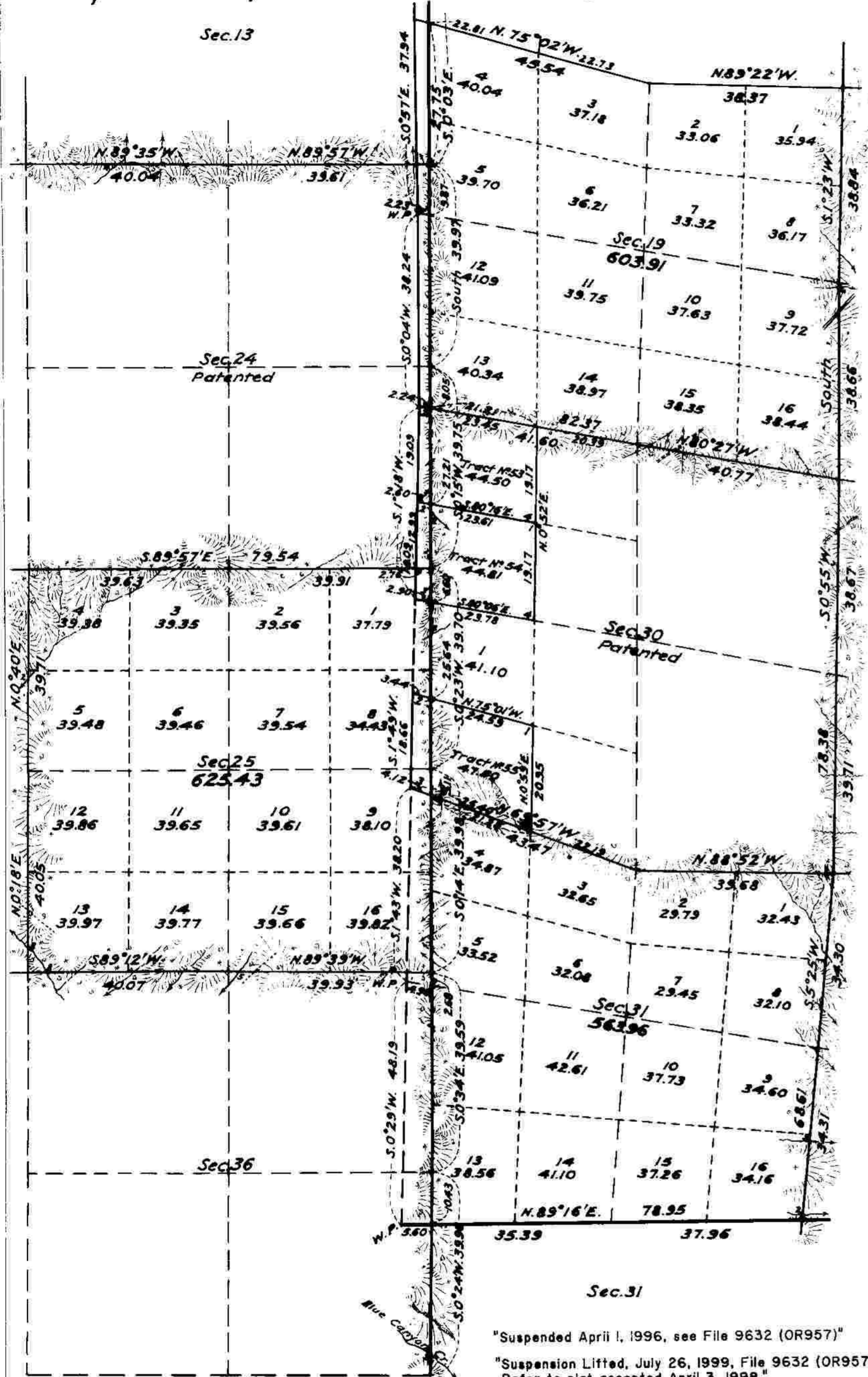


Overlap, Township N<sup>o</sup> 29 South, Ranges N<sup>os</sup> 7 & 8 West of the Willamette Meridian, Oregon.

FILED  
Date: 11-17-1999 By: JC  
This survey consists of:  
Map:  
Narrative:  
Corner Ppt:

DOUGLAS COUNTY SURVEYOR



"Suspended April 1, 1996, see File 9632 (OR957)"  
"Suspension Lifted, July 26, 1999, File 9632 (OR957)."  
Refer to plat accepted April 3, 1998."

Surveys Designated	By Whom Surveyed	Group No.	Date	Amount of Surveys			When Surveyed	
				Mls.	chs.	lks.	Begun	Completed
Exteriors	Fred Mensch US.C.E.	109	Feb. 25, 1924	9	28	56		
Subdivisions	" " "	"	" " "	19	04	94	May 6, 1924	Sept. 19, 1924
Miscellaneous	" " "	"	" " "	21	27	05		

Overlap in  
The above map of Township No. 29 South, Ranges Nos. 7 & 8 West of the Willamette Meridian, Oregon, is strictly conformable to the field notes of the survey thereof which have been examined and approved.

Office of U.S. Supervisor of Surveys,  
Denver Colorado, Feb. 15, 1926.

*Wm. B. Johnson*  
U.S. Supervisor of Surveys.

DEPARTMENT OF THE INTERIOR  
GENERAL LAND OFFICE,  
Washington, D.C., Dec. 13, 1926.  
The survey represented by this plat having been correctly executed in accordance with the requirements of law and the regulations of this office, is hereby accepted.

*Chas. C. Howell*  
Assistant Commissioner.

Scale 20 Chains to an inch  
Mean Magnetic Declination.

619