

TOWNSHIP 29 SOUTH, RANGE 7 WEST, OF THE WILLAMETTE MERIDIAN, OREGON

CORRECTIVE DEPENDENT RESURVEY, DEPENDENT RESURVEY AND SUBDIVISION OF SECTION 17

FILED

Date: 8-18-98 By: J.P.

This survey consists of:

Map: _____

Narrative: Vol. 52

Corner Rpt: Pg. 2008-86

DOUGLAS COUNTY
SURVEYOR

Sec 7

Sec 8

A history of surveys is contained in the field notes

This plat represents a corrective dependent resurvey of a portion of the subdivisional lines, and the dependent resurvey of a portion of the subdivisional lines, T 29 S, R 7 W, Willamette Meridian, Oregon, designed to restore the corners in their true original locations according to the best available evidence, and the subdivision of section 17

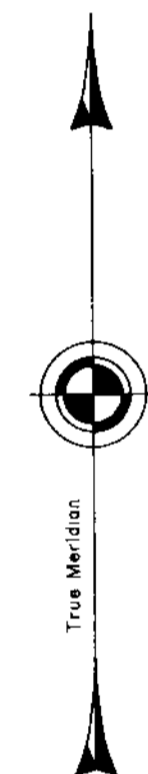
Measured distances and directions have been adjusted by Cadastral Measurement Management (CMM), a computer program that incorporates a least squares adjustment routine. The adjusted bearings and distances are reported to the nearest second and 0.001 chain

Except as shown hereon, the lottings and areas are as shown on the plat approved March 9, 1855.

The survey was executed by Bryan S. Seibold, Cadastral Surveyor and Robert H. Browning, Surveying Technician, beginning August 25, 1994, and completed April 25, 1995, pursuant to Special Instructions dated August 4, 1994, and Supplemental Special Instructions dated April 9, 1996, under Group Number 1745, Oregon

Timber in this area consists of fir, cedar, hemlock, pine, maple, oak, chinquapin, yew, madrone and alder

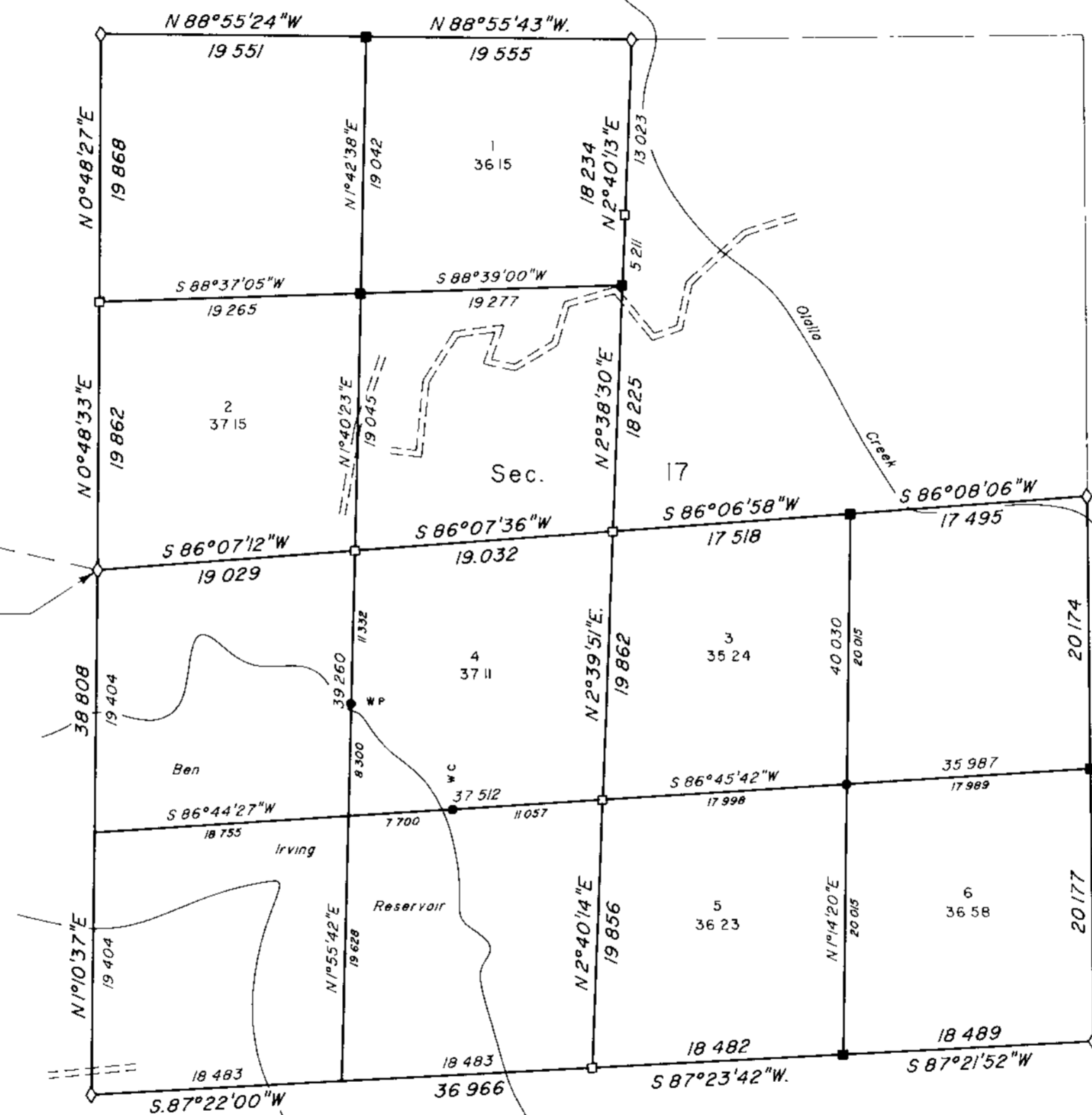
The tie to the geodetic control station is reported as mean bearing and sea level distance



BLM
"EC 41277"
1994

Latitude 43°03'02.52"N
Longitude 123°33'41.05"W
NAD 1927)

Mean magnetic declination 18° East



Sec 16

Sec 19

Sec 20

Sec 21

LEGEND	
	Original corner previously remonumented
	Corner previously established or reestablished
	Corner previously established or reestablished, Remonumented this survey
	Corner established or reestablished this survey

UNITED STATES DEPARTMENT OF THE INTERIOR
BUREAU OF LAND MANAGEMENT

Portland, Oregon

April 3, 1998

This plat is strictly conformable to the approved field notes, and the survey, having been correctly executed in accordance with the requirements of law and the regulations of this Bureau, is hereby accepted

For the Director

Wayne A. Gardner

Chief Cadastral Surveyor of Oregon

