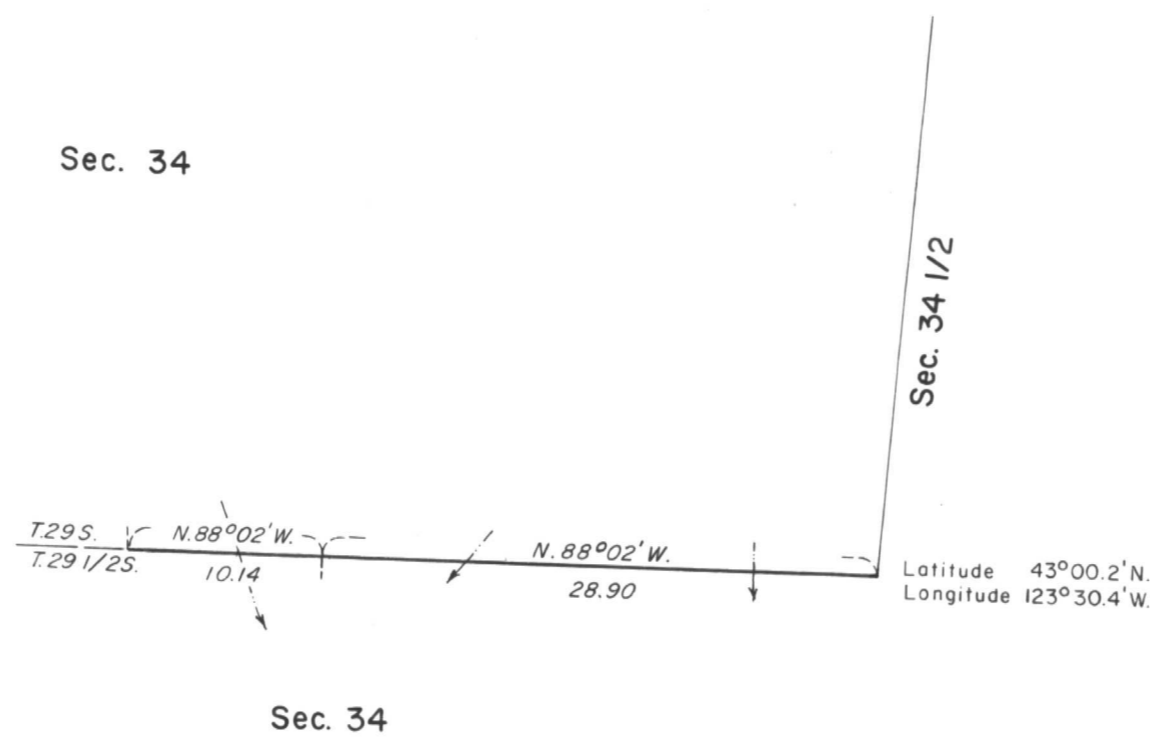
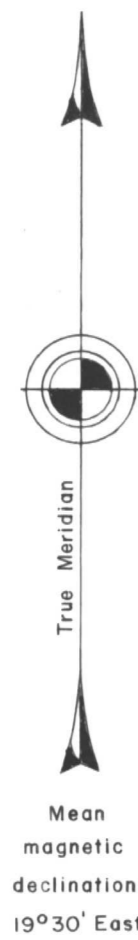


TOWNSHIP 29 SOUTH, RANGE 7 WEST, OF THE WILLAMETTE MERIDIAN, OREGON.

CORRECTIVE DEPENDENT RESURVEY



This plat represents a corrective dependent resurvey of a portion of the south boundary designed to restore the corners in their true original locations according to the best available evidence, T. 29 S., R. 7 W., Willamette Meridian, Oregon.

The south boundary and a portion of the subdivisional lines were surveyed by Nathaniel Ford, in 1854.

The west four miles of the south boundary and portions of the subdivisional lines were resurveyed and surveyed by Fred Mensch, in 1924.

A portion of the south boundary and subdivisional lines was resurveyed by Harvey E. Wofford, G. Steven Popken, and James J. Carlson, in 1974-76. The notes were approved and the plat accepted June 21, 1978. Subsequent to this acceptance, the position of the 1/4 section corner of section 34 only, on the north boundary of T. 29 1/2 S., R. 7 W., established and monumented by Wofford, Popken, and Carlson was protested. An investigation verified the 1/4 section corner monument for section 34 only had been incorrectly positioned.

The corrective resurvey was executed by James E. Jelley and Wayne L. Rogers, Cadastral Surveyors, on January 23, 1981, under Special Instructions dated August 29, 1974, and Supplemental Special Instructions dated December 9, 1980, which provide for the surveys included under Group No. 851.

UNITED STATES DEPARTMENT OF THE INTERIOR  
BUREAU OF LAND MANAGEMENT  
Denver, Colorado December 23, 1981

This plat is strictly conformable to the approved field notes, and the survey, having been correctly executed in accordance with the requirements of law and the regulations of this Bureau, is hereby accepted.

For the Director

Acting Chief, Cadastral Survey  
Examination and Approval Staff



Timber in this area consists of fir, cedar, hemlock, pine, oak, maple, and alder.