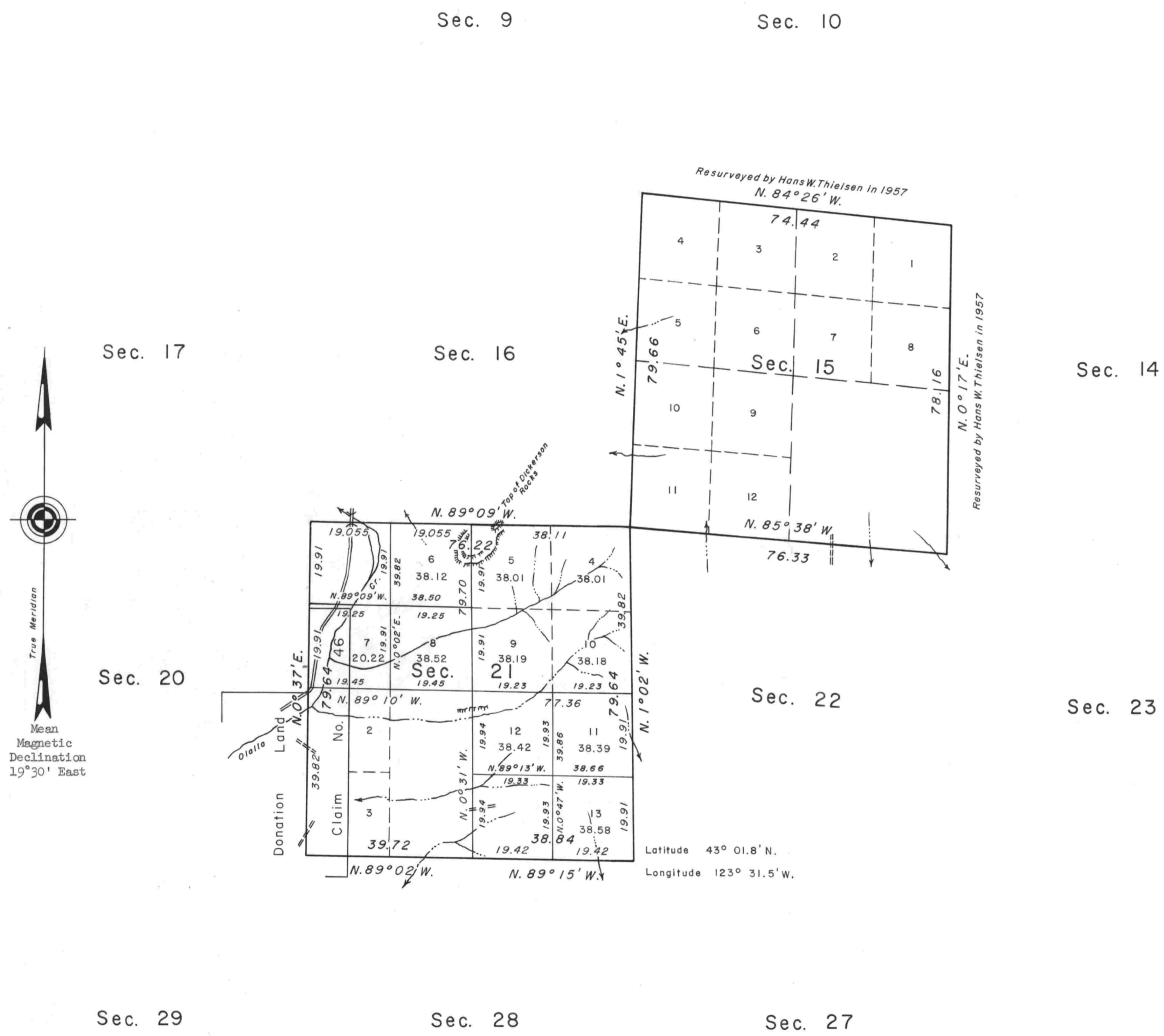


TOWNSHIP 29 SOUTH, RANGE 7 WEST, OF THE WILLAMETTE MERIDIAN, OREGON.
 DEPENDENT RESURVEY, CORRECTION SURVEY,
 AND SUBDIVISION OF SECTION 21



This plat represents a retracement and reestablishment of a portion of the subdivisional lines, correction of the dependent resurvey of the lines between sections 15 and 16 and sections 15 and 22, designed to restore the corners in their true original locations according to the best available evidence, and subdivision of section 21.

Excepting as new or modified vacant subdivisions are shown hereon, the lottings and areas are as shown on the plats approved March 9, 1855, June 30, 1863, and the plat accepted July 11, 1958.

A portion of the subdivisional lines were surveyed by Nathaniel Ford in 1854. In 1957, Hans W. Thielsen resurveyed a portion of the subdivisional lines of the township.

The resurvey, a correction of the dependent resurvey, and subdivision of section 21, were executed by John M. Jelley, Cadastral Surveyor, August 5 to October 10, 1966, under Special Instructions dated March 29, 1957, Second Supplemental Special Instructions dated July 15, 1966, and Third Supplemental Special Instructions dated September 16, 1966, which provide for the surveys included under Group No. 346, Oregon.

UNITED STATES DEPARTMENT OF THE INTERIOR
 BUREAU OF LAND MANAGEMENT
 Washington, D. C. June 5, 1970

This plat is strictly conformable to the approved field notes, and the survey, having been correctly executed in accordance with the requirements of law and the regulations of this Bureau, is hereby accepted.

For the Director

Clark F. Lemm

Chief, Division of Cadastral Survey

Timber in this area consists of fir, cedar, pine, maple, madrone, oak, alder, and chinquapin.

Area resurveyed: 1,228.42 Acres