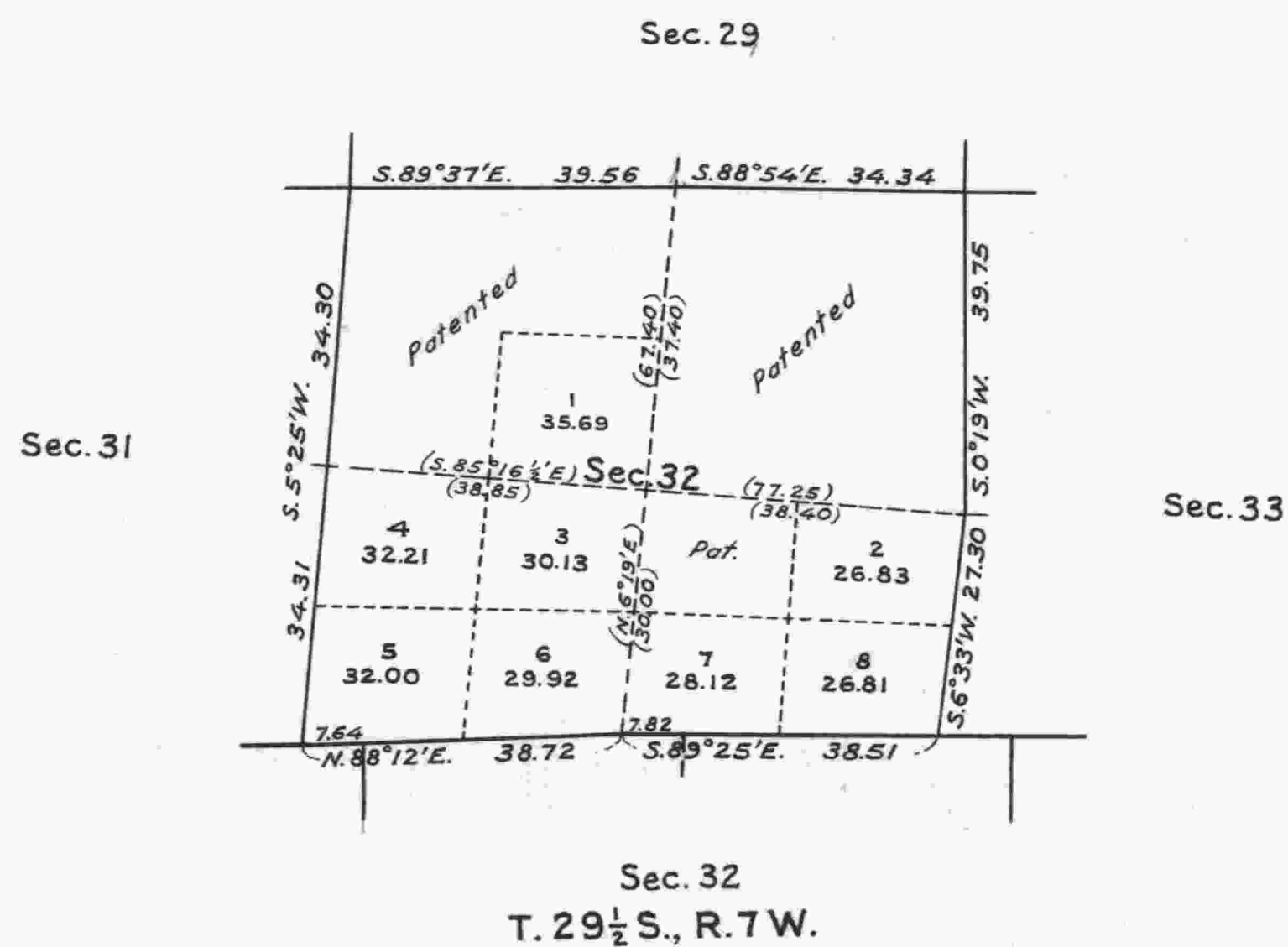


TOWNSHIP N° 29 SOUTH, RANGE N° 7 WEST,  
OF THE WILLAMETTE MERIDIAN, OREGON.  
SUPPLEMENTAL PLAT OF SECTION 32.

Scale: 20 Chains to an inch.



Public Survey Office,  
Portland, Oregon, July 20, 1928.  
The above supplemental plat of Sec. 32, Township No. 29 South,  
Range No. 7 West, of the Willamette Meridian, Oregon, based upon the  
plat approved February 15, 1926, showing new lots 1 to 8 inclusive, to  
accommodate the present owners of the entry of H. N. Shields, Roseburg  
F. C. 6307, and also the patentee and present owner of Roseburg H. E.  
03677, patent 99965, Clarence A. Prock, prepared in accordance with  
instructions contained in Commissioner's letter "E" dated July 6, 1928,  
is hereby approved.

*Joseph A. Loring*  
Office Cadastral Engineer.

Department of the Interior,  
General Land Office,  
Washington, D. C., August 7, 1928  
The new lottings represented by this  
supplemental plat having been correctly  
made in accordance with the regulations  
of this office, the plat is hereby  
accepted.

*J. C. Parrott*  
Acting Assistant Commissioner.